

BECK CENTER FOR THE ARTS

Professional Theater Season | 2023-2024

CAT'S-PAW



SEPT 22 - OCT 22

STUDIO THEATER

Written by **William Mastrosimone**

Directed by **William Roudebush**

THEATER | EDUCATION | EXHIBITIONS | COMMUNITY PROGRAMS

17801 DETROIT AVE | LAKEWOOD, OH 44107
beckcenter.org | 216.521.2540

PLAYBILLS COST \$1.44 EACH TO PRINT





**CELEBRATING OUR PAST - CREATING OUR FUTURE:
90 YEARS OF CREATING ARTS EXPERIENCES
AT BECK CENTER FOR THE ARTS
BY LUCINDA EINHOUSE, BECK CENTER PRESIDENT & CEO**

This is the first history book about Beck Center for the Arts covering the organization’s nearly 90 years of existence.

Available for \$29.95 exclusively on Amazon.com, the book is printed and delivered on-demand, with **all profits going to an endowment for Beck Center for the Arts**. This collectable coffee table paperback book is 196 pages in length, with full-color photos starting with an explanation about the country’s “Little Theatre Movement,” the early days of the organization as “The Guild of the Masques,” to the evolution of Lakewood Little Theatre and the education programs, through today. Vital collaborations and historic news articles are included along with vibrant production shots of plays and musicals throughout the years. Stories of challenges and triumphs abound, and the birth of many of Beck Center’s stars, especially in theater and dance, are regaled.



**NOW available
Amazon.com**



WELCOME TO BECK CENTER FOR THE ARTS

BOARD OF DIRECTORS

Ellen Todia <i>Chair</i>	Michael Brown	Ryan McKean
Mike O'Brien <i>Treasurer</i>	Jane Christyson	Pat Miller
Kathleen McGorray <i>Secretary</i>	Rosemary E. Corcoran	M. Patricia Oliver
Lucinda B. Einhouse* <i>President and CEO</i>	Syma Dar	Barbara Paynter
	Michael Daso	Jeffery Poore
	Chann Fowler-Spellman	John A. Reynolds
	Richard Fox	Bradford Richmond, M.D.
	Allison Tanner Gill	Sandra Sauder
	Frances Floriano Goins	Brian Sinchak
	Kathy Haber	Teresa Struble
	Emily Jett	Corey Donovan Tracey
	Midori Lebron	Margaret G. Weitzel
	Angie Kazi	
	Sean Malloy	

*Indicates paid staff

ALUMNI HALL OF FAME

Michael Chernus
Jack Lee*
Mark O'Donnell*
Rory O'Malley
Austin Pendleton
Marge Redmond*
Matthew Rego
Michael Rego
Jack Riley*
Alice Ripley
Martin Savidge
Hank Unger

*Indicates deceased

HONORARY DIRECTORS

Deborah A. Bridwell, Ph.D.	David C. Estrop, Ph.D.	Ronald Waldheger	Honorary – Ex-Officio Marianne Monahan <i>President Beck</i> <i>Women's Board</i>
Cynthia Brogan	Douglas Hoffman	Thomas C. Wagner	
Nancy B. Calcott	Terry L. Jones		
Joel Egertson	William J. Schmitt		

MANAGEMENT TEAM

Lucinda B. Einhouse.....	President and Chief Executive Officer
Edward P. Gallagher, MT-BC.....	Vice President for Education
Larry J. Goodpaster.....	Vice President for Operations
Scott Spence.....	Artistic Director
Kristen Levy.....	Director of Development
Julie Gilliland.....	Director of Marketing
Kelly Martin.....	Director of Finance

ADMINISTRATIVE AND PRODUCTION STAFF

Tracy Ammon, MT-BC.....	Associate Director of Creative Arts Therapies
Charles Battaglia.....	Associate Director of Development
Sarah Clare.....	Associate Director, Theater Education
Joy DeMarco.....	Education Assistant
Mark DeVol.....	Technical Director
Kristina Edleman.....	Customer Experience Manager
Melinda Glass, MT-BC.....	Music Therapist
Jay'da Hall.....	Annual Fund Manager
Kelsey Heichel.....	Community Engagement Manager
Ann Huebner.....	Registration Support Manager
Tim Keehn.....	Facilities Director
Patsy Coffey Kline.....	Visual Communications Designer
Bryce Evan Lewis.....	Communications Specialist
Melinda Placko.....	Associate Director of Visual Arts & Music
Simon Sedmak.....	Assistant Technical Director
Michael Simile, MT-BC.....	Music Therapist
Melanie Szucs.....	Associate Director, Dance Education
Jake Tisdale.....	Accounting Associate
Rennie Tisdale.....	Customer Service Manager
Kade Bruner, Alessandra Rovito, Justine Horning, Ivy Rook, Saige Rook.....	Customer Service Associates
Riley Candow, Andrew Flinn, Mike Jones.....	Facilities

ABOUT BECK CENTER *Creating Arts Experiences*

Beck Center for the Arts is proud to be a part of Northeast Ohio's professional theater landscape. Like our colleagues Playhouse Square, Cleveland Play House, Dobama Theatre, and Great Lakes Theater, Beck Center has a letter of agreement with Actors' Equity Association. We hire professional actors from the Northeast Ohio region, including members of Actors' Equity. Specifically, we are a Small Professional Theater (SPT) based on the number of seats, number of our performances, and the maximum weekly hours of work we provide to actors. We are also a producing theater. We produce every show on our stages. Meaning we choose the play, cast and rehearse it, build the sets, props, and costumes, direct and perform the music, and design lights and sound, utilizing regional resources and talent, all for you, our valued patron of the arts. Thank you for supporting live theater!

HOUSE INFORMATION

CAMERAS OR RECORDING DEVICES – Copyrights strictly prohibit the photographing, audio or video recording of all productions. Cameras and cell phones may be confiscated.

CELL PHONES – Please turn off all cell phones and audible devices as the sound and screen light are distracting to the audience and especially the cast. Texting is not permitted during performances.

ACCESSIBILITY – Wheelchair ramps, an elevator, and accessible restrooms make all areas of Beck Center accommodating to patrons. *Theatergoers in wheelchairs should request seats in Row J.*

LARGE PRINT PLAYBILLS – Available upon request at our Customer Service desk.

PARKING – Convenient, free, on-site parking.

RESTROOMS – Restrooms are located on the ground floor near the garden court at the west end of the Galleria and on the second floor just outside the elevator.

SMOKING – Beck Center is a non-smoking facility. Smoking is permitted outdoors.

FIRE – Exits indicated by red lights are the shortest route to safety. In case of an emergency, please walk to the nearest exit.

LOST & FOUND – Customer Service maintains a Lost & Found service as a courtesy to our patrons. Please report any misplaced items, lost or found, immediately.

RECYCLING – Beck Center believes in recycling! If you decide to discard your playbill, bottles or cans, please do so in the designated recycling receptacles.

CUSTOMER SERVICE HOURS – 9 a.m. to 8 p.m. Monday through Thursday; 9 a.m. to 5 p.m. Friday and Saturday; 12 p.m. to 5 p.m. Sunday; and open through intermission on performance dates. For ticket information visit beckcenter.org or call 216.521.2540.



VIEW OUR PLAYBILLS ONLINE – Playbills costs \$1.44 each to print. We encourage you to view online by scanning the QR Code.



BOX OFFICE – Scan the QR Code and be connected to season tickets, group sales, and Smart Seats®.

ASSISTIVE LISTENING DEVICES @ BECK CENTER

ASSISTIVE LISTENING DEVICES (ALDS) amplify and clarify sound by cutting down or eliminating ambient noise. Assistive Listening Systems are installed in both the Senney Theater and the Studio Theater and were completely overhauled during the summer of 2021 to improve sound quality and performance. Headsets may be used at any seat and, with the upgrade, induction neck loops are also now available for patrons who use hearing aids and cochlear implants with a “T” switch. Ask your audiologist whether your hearing aid or cochlear implant has a “T” switch (telecoil) and how to use it with an assistive listening headset.

WHO CAN USE AN ASSISTIVE LISTENING DEVICE?

Everyone! While induction neck-loops are only compatible with hearing aids and cochlear implants that include a “T” switch, the ear speaker can be used by anyone who wants a little volume boost.

WILL THE PATRONS NEXT TO ME BE DISTURBED BY THE ASSISTIVE LISTENING DEVICE?

ALDs are designed to deliver sound directly to an individual and work using specific reserved radio frequencies so as to not conflict with any other devices or equipment in use by the theatre or our patrons. In addition, the ear speakers and the neck loops are designed to be as inconspicuous as possible. It’s likely no one will even know you’re using one.

ARE ASSISTIVE LISTENING DEVICES AVAILABLE FOR EVERY SHOW AND EVENT AT BECK CENTER?

YES! As long as the event is held inside the Senney or Studio Theater.

DO I NEED TO REQUEST AN ASSISTIVE LISTENING DEVICE IN ADVANCE?

You do not need to request an ALD in advance of arriving at the theatre and an ALD can be requested at any time during an event. ALDs are distributed on a first-come-first-served basis free of charge. You may request your ALD at the Customer Service desk in the Beck Center lobby.

IS THERE A COST FOR USING AN ASSISTIVE LISTENING DEVICE? No, ALDs are distributed free of charge on a first-come-first-served basis.

DO I NEED TO SIT IN A SPECIFIC PLACE TO USE AN ASSISTIVE LISTENING DEVICE? No, all of our ALDs will work from any seat in any of our three theatres.

DO YOU CLEAN YOUR ASSISTIVE LISTENING DEVICES? Yes, we follow the manufactures maintenance recommendations and use antimicrobial wipes to clean all earpieces and neckloops when they are returned before placing them back into storage.

DO I NEED TO ARRIVE EARLY TO OBTAIN AN ASSISTIVE LISTENING DEVICE? While obtaining an ALD will not take very long, we strongly recommend that all patrons arrive AT LEAST 20 minutes before the performance to allow time to park, get to the theatre, and find your seat.

I HAVE A HEARING AID OR COCHLEAR IMPLANT, WILL AN ASSISTIVE LISTENING DEVICE WORK FOR ME?

Induction neckloops are also now available for patrons who use hearing aids and cochlear implants with a “T” switch. Ask your audiologist whether your hearing aid or cochlear implant has a “T” switch (telecoil) and how to use it with an assistive listening headset. Patrons find this to be the best way to use the ALD’s.

I HAVE SEVERE HEARING LOSS, WILL AN ASSISTIVE LISTENING DEVICE WORK FOR ME? ALDs will generally help anyone who can understand normal conversation either without aid or with a hearing aid. For more severe hearing loss, an ALD alone may not be enough.

QUESTIONS? Please contact customer services at 216.521.2540 or email boxoffice@beckcenter.org. Hours of operations; 9 a.m. to 8 p.m. Monday through Thursday; 9 a.m. to 5 p.m. Friday and Saturday; 12 p.m. to 5 p.m. Sunday; and open through intermission on performance dates.

LUCINDA B. EINHOUSE, PRESIDENT & CEO | SCOTT SPENCE, ARTISTIC DIRECTOR

PRESENTED BY ARRANGEMENT WITH CONCORD THEATRICALS ON BEHALF OF SAMUEL FRENCH, INC. | CONCORDTHEATRICALS.COM

THE VIDEOTAPING OR OTHER VIDEO OR AUDIO RECORDING OF THIS PRODUCTION IS STRICTLY PROHIBITED.

THIS PRODUCTION IS PERFORMED WITHOUT AN INTERMISSION

CAT'S-PAW

Written by **William Mastrosimone**

TIME: APRIL 1983

PLACE: WASHINGTON D.C.

SET: A WAREHOUSE

DIRECTOR
WILLIAM ROUDEBUSH⁺

PRODUCTION STAGE MANAGER
GRACELYN SHALASKI

SCENIC & LIGHTING DESIGNER
CHERI PROUGH DEVOL

COSTUME DESIGNER
INDA BLATCH-GEIB

SOUND DESIGNER
CARLTON GUC

cat's-paw: (noun) A person who is used by another to carry out an unpleasant or dangerous task.
Derived from Jean de la Fontaine's 1679 Fable THE MONKEY AND THE CAT.

SPONSORED BY:



*MEMBERS OF ACTORS' EQUITY ASSOCIATION, THE UNION OF ACTORS AND STAGE MANAGERS.
+THE DIRECTOR IS A MEMBER OF THE STAGE DIRECTORS AND CHOREOGRAPHERS SOCIETY,
A NATIONAL THEATRICAL LABOR UNION.



DIRECTOR'S NOTE

My note is to listen. It's 1983. The year the internet was launched. How many of you sitting here right now have ever known life without the internet? That's how far back I want you to listen from. Ronald Reagan was president and, yes, we reveled in our video tape collections. CNN was only three years old. Listen to the words you are about to hear from that place, that time, that moment of potential change. The prophecy in this play amazes me at every rehearsal; that a play could send an alarm so loud that no one listened. They may have heard the truth but, obviously, based on what is occurring in our world today, no one was actually listening. So..."Director's Note". Listen. Those of you who graduated High School around 1983 or before will get an opportunity to listen to that alarm bell once again. May we all listen, create and pay it forward because the next forty years is turning out to be quite different than the past forty. Tick, tick . . . tick.

CAST OF CHARACTERS

Chris Richards*	Victor
Lara Mielcarek*	Jessica
Michael Dempsey	Darling
Grace Favarro	Cathy

PRODUCTION STAFF

Director	William Roudebush+
Production Stage Manager	Gracelyn Shalaski
Asst. Stage Manager	Angela Tsevdos
Scenic Designer	Cheri Prough Devol
Lighting Designer	Cheri Prough Devol
Costume Designer	Inda Blatch-Geib
Sound Designer	Carlton Guc

CREW

Dan Telford	Carpenter
Connor Stout	Electrics
Pat Ciamacco	Electrics
Micaela Barrett	Scenic Artist
Monica Chung	Scenic Artist

WHO'S WHO IN THE COMPANY

WILLIAM MASTROSIMONE

PLAYWRIGHT

A writer and producer, was born in Trenton, New Jersey. His first play was *The Woolgatherer*, produced in 1979. His screenwriting credits include, *With Honors*, *Into the West*, and the adaptation of his play *Extremities*. He won 2 Daytime Emmy Awards for *Bang*, *Bang You're Dead*, and was nominated for a Prime Time Emmy for *Into the West*, and *The Burning Season*.



SCOTT SPENCE

ARTISTIC DIRECTOR

Is enjoying his 31st season at Beck Center! Since 1990, he has produced over 200 shows, directing over 100 himself. The list of favorites grows every season, and includes *Parade*, *A Man of No Importance*, *Sweeney Todd*, *Hair*, *Picasso at the Lapin Agile*, *The Farnsworth Invention*, *Reefer Madness*, *The Fix*, *Zombie Prom*, *Bloody Bloody Andrew Jackson*, *Evil Dead The Musical*, *The 25th Annual Putnam County Spelling Bee*, and the box

office smash hits *The Producers* and *Altar Boyz*. Recently, Scott added to those favorites with productions of *City of Angels* and *Matilda*. He is very proud of the awards and acclamations Beck Center for the Arts has received over the past decade, and is especially grateful for having won the Northern Ohio Live Award for Achievement in Theatre in 2006. Outside of these walls, Scott's directorial assignments have included a remounting of Beck Center for the Arts' hit production of *Altar Boyz* at Playhouse Square's beautiful Hanna Theatre, *Das Barbecü* at Opera Cleveland, *The Last Night of Ballyhoo* at Case Western Reserve University's Eldred Theatre, *Oh Dad Poor Dad...* at Cleveland State University Summer Stages, and *Noises Off* at both Weathervane Playhouse in Akron and Berea Summer Theatre. An adjunct faculty member at Cleveland State University, Scott has also had the privilege to direct Sartre's *No Exit* and Strindberg's *Miss Julie*. Scott holds an MFA in Directing from Western Illinois University and is a trained stage fight choreographer, having studied extensively with the SAFD. As always, he dedicates all the work he does to his two extraordinarily talented leading ladies, Rachel and Carleigh. You both amaze me every day.

WHO'S WHO IN THE COMPANY



WILLIAM ROUDEBUSH DIRECTOR

Bill relishes his return to his home town of Cleveland each fall to direct the opening production at Beck Center. He directed his first Beck Center production of *They're Playing Our Song* forty years ago while serving as Resident actor and director at the Cleveland Play House under Richard Oberlin's leadership. His local credits include a wide range of memorable Cleveland productions including *Tomfoolery* (Cleveland Play House and The Hanna Theatre) *Equus*, *Lies and Legends*, *Ruthless*, *One Flew Over the Cuckoo's Nest*, *Glengarry Glen Ross*, and last season's *The Curious Incident of the Dog in the Night at Beck Center*. Bill currently is based in New York City with his wife actress Terri Garber where he writes, directs and coaches actors'. He has been a lecturer at seven Universities and is currently a member of the Playwright/Director Unit at New York's iconic The Actors Studio where his artistic focus is new play development. His book *Acting by Mistake* is available online at xlibris.com. You will find countless photos, videos and interviews of Bill by visiting his website at www.williamroudebush.com. He has several new plays and musicals in development and is always searching for a new challenge. Contact him via his website to begin a conversation.



GRACELYN SHALASKI PRODUCTION STAGE MANAGER

Gracelyn is thrilled to be making her Cleveland theatre debut with Beck Center. She'd like to thank Scott, Bill, Angie and the brilliantly talented cast for making this experience such an incredible one. New York City: *Queering the Cannon* (Joe's Pub, The Public Theater). Virginia Commonwealth University: *Spring Awakening*, *The Last Days of Judas Iscariot*, *Eclipsed*, *In the Red and Brown Water*. TV: MTV Music Video Awards.

CHERI PROUGH DEVOL SCENIC & LIGHTING DESIGNER

Is a Scenic and Lighting Designer based in Austin, TX. Regional credits include: *Glengarry Glen Ross* (Scenic Design—Beck Center for the Arts), *The Sunshine Boys* (Scenic Design—Porthouse Theatre), *All Shook Up* (Scenic and Lighting Design—Zilker Theatre Productions), *The Santaland Diaries* (Lighting Design—Zach Theatre), and *Hang* (Lighting Design—Horizon Line Theatre), as well as over 150 productions at Barter Theatre (Virginia) where she designed lighting and/or scenery as Resident Designer, including the world premieres of Deborah Brevoort's *Blue Sky Boys*, and Richard Alfieri's *Revolutions*. Cheri serves as Head of Design Technology and Management in the Department of Theatre and Dance at Texas State University. To view more of her work please visit www.devoul-design.net.

INDA BLATCH-GEIB COSTUME DESIGNER

Inda Blatch-Geib's work as a costume and production designer for over 1,000 theatrical, commercial, and film releases has spanned 35 years and crossed 4 continents. Production and Costume Design has included commercials for Footlocker, The West Virginia Lottery's national award-winning campaigns, The Ohio Lottery, Microsoft, Under Armor, McDonalds, TroyBUILT, Meijer, and The Original Mattress Factory as well as the Cleveland Cavaliers' 1970's and 1980's themed videos, national spots for the team, and design for on court half-time shows including their mascot shield design and pyrotechnic sword. Live performance and festival design include Machine Gun Kelly's US and European Tours as well as ESTFEST and Wolstein Arena productions. Specialty projects include microphone stand designs for MGK and Bear. Print designs have included set styling for Harper's Bazaar UK Scarlett Johansson cover and spread as well as catalogue set styling for Foundations and Kilgore Trout. Additionally, Ms. Blatch-Geib's designs have been showcased in exhibits at The Smithsonian Institute with film projects including Ohio Art Direction of *The Signal* starring Laurence Fishburne and Production and Costume Design of the s *The Con*. Theatrical Design includes Production & Costume Design for the special off- Broadway Production of *Kris Kringle, The Musical*, Costume Design for the Cleveland Play House production of *Native Gardens*, as well as multiple productions for the Colombian National Opera. Music Video Production and Costume Design includes Machine Gun Kelly's *Alpha Omega* and *Let You Go* releases. Locally, Inda is the 2022/2023 Resident Designer for Karamu House, Cleveland Public Theatre, Magical Theatre Company, and Cleveland Institute of Music.

CARLTON GUC SOUND DESIGNER

Recent design credits include *Sweeny Todd* (Cleveland State University); *Once on This Island* (Beck Center); *Rent* (Cain Park). Additionally, Carlton manages the Performing Arts Center for Nordonia School District; Between shows you'll find Carlton playing guitar, writing computer software, or coaching skiing; www.carltonguc.com

CAST OF CHARACTERS



CHRIS RICHARDS VICTOR

Previously at the Beck: *Really Really*; *The Producers*; *My First Time*. Off-Broadway and NYC credits include The Pearl Theatre, The Mint Theatre, Project Shaw, and the Gallery Players. Regional: Pittsburgh Public, the Festival Stage of Winston-Salem, Playhouse on Park, Great Lakes Theatre (four seasons), Cleveland Play House, DOBAMA, Cain Park, none too fragile, Porthouse, Karamu House. Film/TV: *Bull* (CBS), *Skye Hoshi Anime Girl* (Pure Magic Pictures), *Spray Away* (Winner - "Best Comedy" - Myrtle Beach International Film Festival 2023). Upcoming films: *Higher Lows* and *First of Seven*. Training: BFA in Musical Theatre, Kent State University. Proud member of Actors' Equity Association and SAG-AFTRA. Additional info: www.chrisrichardsonline.com | IG: @thisischrishrichards.



LARA MIELCAREK JESSICA

Beck Center for the Arts- *Seminar*, *Meteor Shower*. Dobama Theatre- *Hurricane Diane*, *Marie Antoinette*, *'Or*, *Becky Shaw*, *The Norwegians*, *Cock*, Ensemble Theatre- *Moon for the Misbegotten*, *Well*. Lara is a core company member of the Ohio Shakespeare Festival where she has played 13 years worth of the Bard's leading ladies. Favorites include: *Beatrice/Much Ado About Nothing*, *Lady M/Macbeth*, *Paulina/Winter's Tale*, *Olivia/Twelfth Night*. She runs a program called ARC, a Shakespeare behind bars effort out of the women's prison, NERC. By day, Lara is a Public Speaking teacher at St Ignatius High School.



MICHAEL DEMPSEY DARLING

Has written, acted and directed in theatre, film and television for over 30 years. National writing credits include CBS sitcoms, and his plays have been produced Off-Broadway and regionally. Acting: At Beck, *in 1776* (Wilson), *Fiddler on the Roof* (Avram) and *The Seagull* (Medvedenko). Elsewhere: *Mamma Mia!* (Harry), *Young Frankenshtine* (Igor), *A Funny Thing . . .* (Hysterium), *Macbeth* (Macbeth), *Tuck Everlasting* (The Man In The Yellow Suit), *Baby* (Alan) and *Comma* (Jim). NE Ohio directing: *King Lear*, *Into The Woods*, *Camelot*, *The Rocky Horror Show*, *I am My Own Wife*, *Sweeney Todd*, *Jesus Christ Superstar*, *The Last Five Years*, *Of Mice and Men*. Michael trained at Ohio State University, Cornell University, Actors Theatre of Louisville and National Theatre of Great Britain. Memberships: WGA, DG, SFFWA. Michael's a past recipient of an Ohio Arts Council Individual Excellence Award for playwriting. His novel *Necropolis* is available from Night Shade Books.



GRACE FAVARRO CATHY

Baldwin Wallace University: *Stupid F*cking Bird*, *The Last Days of Judas Iscariot*, *As You Like It*, *Henry VI Part II*, *Stage Door*. Regional: *Hamlet*, *Measure for Measure* (Ohio Shakespeare Festival), *Kiss of the Spider Woman* (Blank Canvas Theatre). Film: *Broken Links*, *Chains of Redemption*, *The Camp*. Beck Center holds a lot of great memories for Grace in her youth. She's glad to be back with a new set of chops and a deeper love for the craft. Shoutout to Nonnie, Geno, and her parents for being the best biggest-fans ever. WEBSITE: gracefavarro.com | INSTAGRAM: @gracefavarro

Act one begins



... WITH INVESTMENT BY CUYAHOGA ARTS & CULTURE

Cuyahoga Arts & Culture (CAC) uses public dollars approved by you to bring arts and culture to every corner of our County. From grade schools to senior centers to large public events and investments to small neighborhood art projects and educational outreach, we are leveraging your investment for everyone to experience.



Your Investment:
Strengthening Community

Visit cacgrants.org/impact to learn more.

DOBAMA CLEVELAND'S OFF-BROADWAY THEATRE

MAKE BELIEVE

by bess wohl

**OCT 6 –
OCT 29**

**DEC 1 –
DEC 30**

LITTLE WOMEN

by heather chrisler

**AT THE WAKE OF
A DEAD DRAG QUEEN**

by terry guest

**JAN 26 –
FEB 18**

**MAR 8 –
MAR 30**

SOMETHING CLEAN

by selina fillinger

SIGNIFICANT OTHER

by joshua harmon

**APR 26 –
MAY 19**

23/24 SEASON

DOBAMA.ORG

WOMEN'S BOARD



Founded in 1936, The Women's Board's mission is to support Beck Center for the Arts in its effort to create a community where everyone can be directly involved in the performing and visual arts, Creating Arts Experience. Through the years, the Women's Board has raised and contributed hundreds of thousands of dollars and provided thousands of volunteer hours to support performances, programs, and day-to-day operations at Beck Center.

The Women's Board meets the third Tuesday, September through May, and offers fundraisers and activities year-round.

For additional information,
please go to:

**[www.beckcenter.org](http://www.beckcenter.org/about/womens-board)
[/about/womens-board](http://www.beckcenter.org/about/womens-board)**



BECK CENTER FOR THE ARTS ANNUAL CONTRIBUTORS

We gratefully acknowledge the support of the following individuals, corporations, foundations, government grants, and organizations, which have contributed to Beck Center for the Arts' Annual Fund in support of our mission to inspire, enrich, and transform lives through dynamic arts experiences. The current listing includes donors of \$250 or more to the Annual Fund between May 31, 2022 and August 31, 2023. We greatly appreciate all our supporters. For any corrections or more information on the benefits of these giving circles, please contact our Director of Development, Kristen Levy, at klevy@beckcenter.org or 216.521.2540.

INDIVIDUALS, FOUNDATIONS, CORPORATIONS AND ORGANIZATIONS LEADERSHIP CIRCLE (\$10,000 and above)

Community West Foundation
Cuyahoga Arts and Culture
Cuyahoga County
The William R. Daniels Memorial Fund
Dorn Family Foundation
First Federal Lakewood
The Char and Chuck Fowler Family Foundation
Chann Fowler-Spellman and Ed Spellman
Harry F. Fox and Emma R. Fox Charitable Foundation
Gallery Group, Inc.
The George Gund Foundation
Kulas Foundation
City of Lakewood
The Vida C. Logan Fund
Robert Lugibihl
William Minnich
John P. Murphy Foundation
The Nord Family Foundation
Ohio Arts Council
PNC Bank
The Reinberger Foundation
John A. Reynolds
Sandy Sauder
Vivian H. Schulze Trust
Joyce and Walter Senney
The Kelvin and Eleanor Smith Foundation
State of Ohio

FOUNDER'S CIRCLE (\$2,500 to \$4,999)

Rachel Abernethy
Anonymous
Carol Barnak
The George W. Codrington Charitable Foundation
Doug Cooper
Joan Alice Ford
Richard and Judy* Fox
William Garrison and Mary Jo Mlakar
Kathy and Ken Haber
Healthy Lakewood Foundation
Martha J. Lanning
Sean Malloy
Ryan and Alysia McKean
Nancy and John McMillan
National Association of State Procurement Officials (NASPO)
Nordson Corporation Foundation
Michael and Carol O'Brien
Pat and Jim Oliver
Lee and Maria Parks
Anthony and Mary Rego
Brad and Margaret Richmond
Jean Stell

Ellen Todia and David Matthiesen
Turner Construction Company
Philip Wenk
Women's Board of Beck Center

BENEFACTOR'S CIRCLE (\$2,500 to \$4,999)

Bober Markey Fedorovich
Dale and Cindy Brogan
Civista Bank
Syma Dar
Allison Dassani
Eaton Charitable Fund
Cindy and Tim Friedmann
Harold L. and Patricia D. Williams Charitable Fund
William C. Hartman
Huntington National Bank
David and Cheryl Jerome
Terry and Dona Jones
KeyBank Foundation
The Laub Foundation
Tess and Richard Neff
Jeff and Nora Poore
Robert Half Recruiters & Employment Agency
Nancy and Jim Seibert
Jan Soeder*
Landon and Corey Tracey
Ulmer and Berne LLP
Jane and Jim Vitou
Margaret Weitzel
Laird and Jennifer Wynn

CHAIRMAN'S CIRCLE (\$1,000 TO \$2,499)

Ann and Bob Aber
Anonymous
Brenda and George Anthony
Elise and Steve Auvil
Bank of America Charitable Foundation
Benevity
The Bonne Bell Family Foundation
Curt Brosky and Betty Tereck
Michael and Leslie Brown
Georgia A. Burley
Eddie-Lou and Lew Bush*
Nancy and Jack Calcott
Barbara Jo and Richard Chernus
Cleveland Home Title Agency, Ltd.
Mary Coe
Cohen & Company
Corrigan Krause
Jeff and Lori Culliton
The Cyrus Eaton Foundation
Michael and Amy Daso
Michael DeAlaio and Nora Loftus
Sherrie Desmond
Joel and Bonnie Egertson
Cindy and Tom Einhouse

Equitable Advisors
Equity Trust
Jon and Mary Fancher
Larry and Rosemary Faulhaber
FBC Chemical Corp.
Judy and Steve Fesko
The Foell Family
The Giant Eagle Foundation
Dorothy Ginley-Bahm
Frances Floriano Goins
Chuck and Nancy Gustafson
Bonnie J. Hagerman
Madison Development Co, LLC
Karol Hoeffler
John and Mary Kay Jefferson
Emily Jett and Mark Getsay
Susan Joplin
Kim and Nora Katzenberger
Andrew L. Killian*
Seralinda Kiser
John Koral
Gerrit and Peg Kuechle
Tom and Concetta Kuluris
Lakewood Arts Festival
Karen Langenwalter
Latham Family
Kathleen Lawther
Bill and Joyce Litzler
Rachelle Loraine and Tom Flynn
McDonald Hopkins, LLC
Kathleen McGorray and Bob Soffer
Medical Mutual
Pat and Tina Miller
The Music and Drama Club
Dr. and Mrs. Peter Nintcheff
Anne and Jack Palomaki
Barbara and Bob Paynter
Amy and Tom Petrus
Jeffrey and Susan Ritter
Richard and Mary Sanders
Laura and David Sangree
The Walter V & Judith L Shipley Family Foundation
Bill Spang
Bill Spence
Ann Spence
Art and Sherri Stehlik
Mr. and Mrs. John Steinbrunner
Sunshine Ventures LLC
Kenneth and Martha Taylor
Thomas Wagner and Malinda Smyth
Jonathan Ward
Joe and Kathy Ward
Mary C. Warren
Libby and Christopher White
Suzanne Wiedemer
Dave Willett and Steve Meka
Janice Young

PRESIDENT'S CIRCLE

(\$500 TO \$999)

Ann and Bob Aber
 Anonymous
 Robert Bade and Linda Hurley
 Baldwin-Wallace University
 Kathleen A. Baskoff and Steven Schwarz
 George and Sandra Berendt
 Mary Beth Campbell and Mark Sisteck
 Jane Christyson and Robert Mahoney
 Colleen Clark-Sutton and Tom Sutton
 Beverly Coen
 Hal Cooper
 Rosemary Corcoran
 Carol Crowe
 Ray and Dawn Cushing
 Marilyn Cvetic
 Megan DeFranco
 David Delgado and Linda Springer
 Thomas and Mary Ellen Fraser
 A.J. Cianflocco and Mary Anne Garvey
 Goodman Real Estate Services Group, LLC.
 Carol Gould
 Scott Hannah and Bill Green
 Brian Murphy
 Jack and Kim Kellogg
 Edward Knotek
 Dennis Lansdowne
 Lynn and Mary Lazzaro
 LGBT Community Center of Greater Cleveland
 Mike Linton
 Tony Marini
 Scott Montgomery
 Music Box
 Rick and Jane Nash
 Patrick and Sharon Perotti
 Pledgeling Foundation
 John and Norine Prim
 Judy and John Pyke
 Heather Richmond
 Eugene and Marge Ruminski
 Ron Rydarowicz
 Martin Saltzman
 Sue Schroer
 Trey and Erin Senney
 Parvathi and Seth Shalov
 Brian Sinchak
 Kathleen J. St. John
 Timothy C. Stevens
 Allison Tanner Gill
 Arthur L. Thomas
 Sara and Jason Verderber
 Gina Vernaci and Bill Hilyard
 West Shore Unitarian Universalist Church

DIRECTOR'S CIRCLE

(\$250-\$499)

Thomas and Joann Adler Family
 Philanthropic Fund
 AmazonSmile Foundation
 Anonymous
 State Senator Nickie Antonio and Jean Kosmac
 M. Karen Aylward
 Rose Babington
 Mark and Cynthia Bacon
 Dede Baker
 Emma and Robert Barcelona
 Ethyl L. Bendler

Bill and Janet Bird
 Amy Holtshouse Brennan
 Marianne Byrne
 Janice and Jack Campbell
 Sally Carr
 Mike Chernus
 Deborah Clare Laub
 Joanne and Tim Clemens
 Patricia Csonge
 Mary Ann and Dave Dombrowiak
 Susan Duffy
 Mary Eileen Fogarty
 Ed and Lisa Gallagher
 Eileen and John Gallagher
 Ed and Mary Jane Hadaway
 Maxine W. Houck
 Gail Jackson
 Carol and William Jacobs
 Jenny Jones
 Mary and Chris Kay
 Catherine Kearney
 James Keily
 Brian Kennedy
 Stanley W. Kline
 Barb and Charlie Koch
 David Kuentz
 Lakewood Catholic Academy
 Betsy Lambert and Family
 Tim and Patti Laskey
 Matt and Angela Lay
 LuAnn Leonard and Brian Byers
 Frederic Levine and Janine Martyn
 Mary and Brian Marita
 Michael and Peggi Mizen
 Jessie Patterson
 PNC Foundation Matching Gift Program
 Timothy and Jen Powers
 Melissa Richmond and William Watterson
 John J. Ritchey
 Keith and Donna Rush
 Lynda Sackett
 Patricia Scanlon
 Arthur E. Spector
 Karin Stone
 Nick and Judy Stowe
 Susan Szanyi
 Kenneth S. Trump and Family
 Greg Violand
 Nelson Wagner
 Benjamin and Melanie Whiting
 Robert C. and Emily C. Williams
 Bill and Ann Zabkar

*Indicates deceased

HONORARY GIFTS

Beck Center for the Arts would like to thank those who have given gifts in honor of the following individuals:
 Eileen, Olivia and Cameron Brady
 Colleen Clark-Sutton and Tom Sutton
 Rosemary Corcoran
 Elizabeth E.
 Cindy Einhouse
 Rob Hendry
 Ann Klonowski
 Jack Lazzaro
 Ingrid Matera
 Anne McEvoy
 Iris November

Michael J. O'Brien
 M. Patricia Oliver
 Douglas N. Puskas
 Tom and Helen Rathburn
 John Reynolds
 Ally Rovito
 Lynda Sackett
 Aria Sova
 Jason Weiner
 The Whittemire Family
 Megan Winters
 Amy Wooley

MEMORIAL GIFTS

Beck Center for the Arts would like to thank those who have given gifts in memory of the following individuals:

G.D. "Leo" Stewart, II
 Rita A. Barniak
 Emily Baskoff
 Ruth Bertrand
 Amy Brotherton Staskus
 Walt Campbell, Mary Campbell Nir, & Margaret Campbell
 Carol Culp
 Leah R. Detrick
 Rosemarie Feighan DeJohn
 Judy A. Fox
 Pam Gallagher
 Fran and Evelyn Girardi
 Darla R. Hall
 William J. Harper
 Ellen Huber
 Barbara Hunter
 Kevin Kelly
 Andrew Killian*
 Bruce W. Lang
 Janet Lasley
 Nancy McIvor
 Mary Lou McKulic
 Jack Delano Neal, PHD
 Barbara Nussbaum King
 Nancy A. Score
 Stan Spence
 Barbara Swearingen
 Dr. Raymond Votypka
 Betty Weiss
 Mary Ellen Zimmerman

WITH SPECIAL THANKS

Cuyahoga County residents through Cuyahoga Arts and Culture Ohio Arts Council



BECK CENTER CREATING OUR FUTURE CAMPAIGN CONTRIBUTORS

We gratefully acknowledge the support of the following individuals, corporations, foundations, government grants, and organizations that have contributed \$1,000 or more to Creating Our Future: The Campaign for Beck Center. As of August 31, 2023. For more information on naming opportunities and touring our renovations, please contact Director of Development, Kristen Levy, at klevy@beckcenter.org. We are excited to have begun the third and final phase of renovations, which includes the addition of new restrooms, dedicated classroom space for theater education, an ADA-accessible entrance, and a new marquee for the Senney Theater. When completed, Beck Center will have renovated over 55% of the campus (35,000 sq ft) to bring the standards of our facilities up to those of our programming.

\$1,000,000+

Joyce and Wally Senney

\$500,000 - \$999,999

Chann Fowler-Spellman and Ed Spellman
State of Ohio

\$100,000 - \$499,999

The Callahan Foundation
Fidelity Charitable Gift Fund
The Char and Chuck Fowler Family Foundation
Kathy and Ken Haber
Bonnie J. Hagerman
Doug Hoffman and Ron Stach
Bill and Joyce Litzler
William Minnich
Oatey Foundation
John A. Reynolds
Sandra Sauder
William and Susan Schmitt
The Kelvin and Eleanor Smith Foundation
Ellen Todia and David Matthiesen
WWMR Foundation

\$50,000 - \$99,999

Dale and Cindy Brogan
The George W. Codrington Charitable
Foundation
Doug and Karen* Cooper
David Deming
Dorn Family Foundation
Mary and Tom Holland
Michael and Carol O'Brien
Lee and Maria Parks
Pam and Tom Smith
Michael and Wendy Summers
Women's Board of Beck Center

\$25,000 - \$49,999

Anonymous (5)
Barber & Hoffman, Inc.
Bialosky & Partners Architects
Curt Brosky and Betty Tereck
Commercial Interior Resources, Inc.
Elaine and David* Cook
Mary Anne and Byron Crampton
Dependable Painting Company
Eaton Charitable Fund
Cindy and Tom Einhouse
David Greenspan and Mary Kim Elkins
Cindy and Tim Friedmann
Bill Garrison and Mary Jo Malakar
Charles and Nancy Gustafson
The Hershey Foundation
Elda C. Krach
Rotary Club of Lakewood-Rocky River
Sean Malloy
Mickey and Larry Mencin
In Memory of Barbara Nussbaum King

Pat and Jim Oliver
Anne and Jack Palomaki
Anthony and Mary Rego
Laura and David Sangree
Schwab Charitable Fund
Carolyn P. Seelbach*
Gina Vernaci and Bill Hilyard
Thomas Wagner and Malinda Smyth
Mary C. Warren
Laird and Jennifer Wynn

\$10,000 - \$24,999

Anonymous (5)
Barber & Hoffman, Inc.
Bialosky & Partners Architects
Curt Brosky and Betty Tereck
Commercial Interior Resources, Inc.
Elaine and David* Cook
Mary Anne and Byron Crampton
Dependable Painting Company
Eaton Charitable Fund
Cindy and Tom Einhouse
David Greenspan and Mary Kim Elkins
Cindy and Tim Friedmann
Bill Garrison and Mary Jo Malakar
Charles and Nancy Gustafson
The Hershey Foundation
Elda C. Krach
Rotary Club of Lakewood-Rocky River
Sean Malloy
Mickey and Larry Mencin
In Memory of Barbara Nussbaum King
Pat and Jim Oliver
Anne and Jack Palomaki
Anthony and Mary Rego
Laura and David Sangree
Schwab Charitable Fund
Carolyn P. Seelbach*
Gina Vernaci and Bill Hilyard
Thomas Wagner and Malinda Smyth
Mary C. Warren
Laird and Jennifer Wynn

\$5,000 - \$9,999

Rachel Abernethy
American Endowment Foundation
Anonymous
Mark and Cynthia Bacon
Juliana Bell
Ruth B. Bertrand*
The Bonne Bell Family Foundation
Michael R. and Leslie Brown
Monica Brown
Georgia A. Burley
Nancy and Jack Calcott
Dance Alliance of Beck Center
Syma Dar
Michael and Amy Daso
The Dominion Energy Charitable Foundation

David and Virginia Estrop
Larry and Rosemary Faulhaber
Pam Gallagher*
Dorothy Ginley-Bahm
Kim and Nora Katzemberger
Andrew L. Killian*
John and Judy Kropf
Lakewood-Rocky River Sunrise Rotary Club
William LaPlace
Carol Latham
Terrence and Karen McHugh
Ryan and Alysia McKean
Nancy and John McMillan
Patricia and George Miller
Nordson Corporation Foundation
Monica and Keith Owen
Barbara and Bob Paynter
Jeff and Nora Poore
Donna Rae and Edward Smith
Art and Sherri Stehlik
Theater Alliance of Beck Center
Richard and Gail Tanner
Landon and Corey Tracey
Turner Construction Company
Philip Wenk

\$1,000 - \$4,999

Dena and Daniel Adler
Adobe Systems Incorporated
Joel and Teresa Andreani
Anonymous (2)
Brenda and George Anthony
State Senator Nickie Antonio and Jean Kosmac
AXA Advisors LLC
Sam and Chrysa Babic
Tom and Jenni Baker
Kathleen A. Baskoff and Steven Schwarz
Kathryn Berkshire
Liz and David Breudigam
Robert and Mary Calsin
Patrick Carroll and Diana D'Alessandro
Lynda Carter
Charities Aid Foundation of America
Colleen Clark-Sutton and Tom Sutton
Community West Foundation
Hal and Connie* Cooper
Rosemary and Richard* Corcoran
Tim and Tracy Coughlin
Joanna and Marc D'Agostino
Matthew and Kathleen Daugherty
Mary Beth and Jeff DeClerck
David Delgado and Linda Springer
Tom and Tricia Dent
Sherrie Desmond
Gregory Good and Adrienne Embery-Good
Victor and Janet Erml
Jon and Mary Fancher
Jenny and Ralph Febbo
FGI Foundation

Jim and Mary Gagen
 Ed and Lisa Gallagher
 Henry Hilow and Judy Ghazoul Hilow
 Joe and Peggy Gibbons
 Kathy Goepfert
 William Gorton and Susie Blackburn
 George Graham and Michael Fleenor
 Michelle Hillstrom
 Barbara Hueter and Andrew Zajac
 Hyland Software, Inc.
 Impel Creative, Inc.
 John and Mary Kay Jefferson
 Emily Jett and Mark Getsay
 Robert and Betty Karras
 Mary and Chris Kay
 KeyBank Foundation
 Cathy and Peter* Kuhn
 Richard and Laura Little
 Richard and Shirley Lutts
 Tony Marini
 Mary and Brian Marita
 Kelly and Jeremy Martin
 Cindy and Jake Marx
 Amy and Ian Maurer

Freida McGee and Michael Wochna
 Kathleen McGorray and Bob Soffer
 Dave and Val Mechenbier
 Marcello and Shelley Mellino
 Carol and Dale Miller
 Colin and Sarah Moeller
 Barbara Morrison
 Lauren Mueller
 Dr. and Mrs. Peter Nintcheff
 Dave and Traci Nolan
 John O'Brien
 Deborah and John O'Neill
 Naomi Opdycke
 Jim and Barbara Pearce
 PNC Foundation Matching Gift Program
 Donna and George Puskas
 Tom and Helen Rathburn
 Carol and Bob Richardson
 John J. Ritchey
 Jeffrey and Susan Ritter
 Karen Rockhold
 Brian Sapola and Jessica Lovich-Sapola
 Sharon and Steve Scholdt
 The Herb Score Family

Mark and Nancy Seryak
 Sherwin-Williams Company
 Brian Sinchak and Lakewood Catholic
 Academy
 Victoria and Daniel Smigelski
 Jan Soeder*
 Stephanie Spahr
 Bill Spence
 Ann Spence
 The Staub Family
 Mr. and Mrs. John Steinbrunner
 Thomas and Melissa Stickney
 Bob Taylor and Jeff Herrmann
 Arthur L. Thomas
 Terry and Candace Vincent
 Kathy and Gregg Wasilko
 Karen and Jeffrey Weber
 Dick West
 Judith and Walter Wright
 Karen Youngstrom

*Indicates deceased

HELEN BROWN SOCIETY

All of us here at Beck Center for the Arts would like to thank those who let us know they have included Beck Center in their will or estate plans. Members of the Helen Brown Society are recognized in our playbills, invited to select events and performances, and ensures future generations will have dynamic arts education and performance in our community. For more information regarding the Helen Brown Society or planned giving, please contact our Director of Development, Kristen Levy, at klevy@beckcenter.org.

Rachel Abernethy
 Anonymous (3)
 Kenneth C. Beck Estate
 Ruth B. Bertrand*
 Estate of Nicholas C. Brodella
 The Helen E. Brown Trust
 Jean Bulicek Estate
 Milan G. Busta*
 Nancy and Jack Calcott
 Mary Beth Campbell and Mark Sisteck
 Rosemary Corcoran
 Helen T. Corns*
 Cotabish Charitable Remainder Trust
 Mary Anne and Byron Crampton
 The William R. Daniels Memorial Fund
 Norma M. Dolezal
 Estate of Janet L. Dreyer
 Cindy and Tom Einhouse
 David Greenspan and Mary Kim Elkins
 Estate of Juanita V. English
 Dianna and Michael Foley

Virginia Q. Foley*
 Joan Alice Ford
 Estate of Lorna Hart
 Mr. and Mrs. James P. Hendy
 Doug Hoffman and Ron Stach
 The Pauline Hudson Estate
 Yoshiko Ikuta*
 Nozomi Ikuta
 The Virginia Jones Fund
 Andrew L. Killian*
 R. Robert Koch Trust
 Vilma L. Kohn
 Pauline Kurtz
 The Vida C. Logan Fund
 Kathleen McGorray and Bob Soffer
 John and Mary McGowan
 Lisa Mackey McLean and David McLean
 Maurice J. Mitchell
 Dave and Traci Nolan
 Estate of Donald A. Nykanen
 Lee and Maria Parks

William and Patricia Reichard
 Karen Rockhold
 Ethel Scheingold Estate
 William and Susan Schmitt
 Vivian H. Schulze Trust
 Nancy Score*
 J.R. Shaw and Dek Ingraham
 Mr. Howard Egert, Esq.*
 Gerry and Cheryl Smith
 Vince Smith
 Estate of Mary Ruth Steele
 Estate of Jeanette E. Stewart
 Max W. Thomas
 Hugh Thurnauer Trust
 Family of Hugh Thurnauer
 Ellen Todia and David Matthiesen
 Thomas Wagner and Malinda Smyth
 Joe and Kathy Ward
 Sally and Jim Weakley
 Margaret Weitzel
 Estate of Thomas Williams

BECK CENTER'S DANCE PROGRAM IS SUPPORTED BY THE LYNDA SACKETT ENDOWMENT FOR DANCE EDUCATION AND THE JAMES KURTZ MEMORIAL ENDOWMENT FUND.

BECK CENTER'S YOUTH THEATER PROGRAM IS SUPPORTED BY THE MARY WARD SCHOLARSHIP FUND.

THE COMMUNITY WEST FOUNDATION IS A PROUD SUPPORTER OF CREATIVE ARTS THERAPIES AT BECK CENTER FOR THE ARTS.



SCAN TO SUPPORT BECK CENTER FOR THE ARTS! YOU MAKE THE DIFFERENCE!

Beck Center for the Arts has been transforming lives for over 90 years through the magic of live theater, arts education for all ages and abilities, collaboration, creative arts therapies, community programs, and free programming. Beck Center creates arts experiences for over 60,000 people annually, and is one of the largest cultural attractions in Northeast Ohio. Help us continue creating arts experiences by making a gift!

I'M NOT JUST YOUR
NEIGHBOR



I'M ALSO YOUR
**REAL ESTATE
AGENT**

WHETHER YOU ARE LOOKING TO BUY OR SELL,
I WOULD LOVE TO HELP!



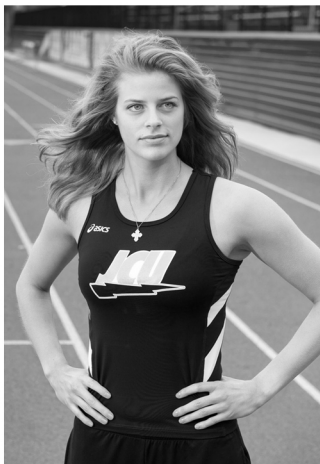
TOP AGENT ON OHIO'S
#1 REAL ESTATE TEAM

RACHELLE LORAINE
REALTOR®

614-483-9569

Rachelle@EzSalesTeam.com

NEZSALESTEAM | **KW CITYWIDE**
A MEMBER OF THE EZ REFERRAL NETWORK | **KELLERWILLIAMS.**



Wetzel's
PHOTOGRAPHY

Advertising • Commercial • Editorial
216-771-1554 wetzlers.com

It's time for a new identity.

**One that tells the story of creativity
in Ohio and illustrates it.**

Ohio Arts
COUNCIL



Expression is an essential need.

**By better illustrating our story,
we can better help you express yours.**

Complete the story at oac.ohio.gov/identity.

30 EAST BROAD STREET, 33RD FLOOR, COLUMBUS, OHIO 43215-3414 | 614-466-2613

OAC.OHIO.GOV | @OHIOARTSCOUNCIL | #ARTSOHIO

**2023
2024
SEASON**



Ensemble Theatre
Great Scripts. Cleveland Artists.

SEP 8 - SEP 24

Lungs

by Duncan
Macmillan



OCT 27 - NOV 12

The Island

by Athol Fugard, John Kani,
& Winston Ntshona



FEB 9 - FEB 25

**Mother
Courage
and
Her
Children**

by Bertolt Brecht
Translated by Tony Kushner



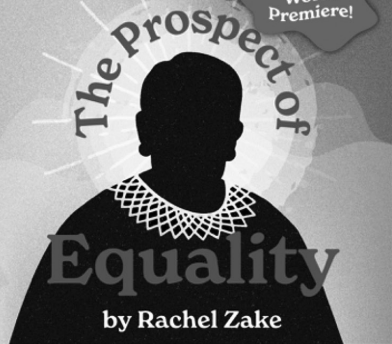
MAY 24 - JUN 9

**The Prospect of
Equality**

World
Premiere!

Equality

by Rachel Zake



Colombi

**NEW PLAYS
FESTIVAL**



**In Our
Own Words**

Our Stories, Our Voices



Take Command of Team Performance

Dale Carnegie is proud to partner with the Beck Center for the Performing Arts to help them build their team.

Can we help you build your team?



Offering professional development in communication, sales, customer service, and leadership.

neohio.dalecarnegie.com

Marilee MacAskill
216-223-7733
Marilee.MacAskill@dalecarnegie.com

