

book adapted by
**BOB MARTIN &
THOMAS MEEHAN**

directed by
**SCOTT
SPENCE**

lyrics by
**CHAD
BEGUELIN**

musical direction by
**LARRY
GOODPASTER**

music by
**MATTHEW
SKLAR**

choreography by
**MARTÍN
CÉSPEDES**



The Musical

DEC 3 - JAN 2, 2021 - 2022
SENNEY THEATER

Based on the hit holiday classic New Line Cinema film
by **DAVID BERENBAUM**

By special arrangement with Music Theatre International, Inc., New York

17801 DETROIT AVENUE, LAKEWOOD, OH 44107
THEATER | EDUCATION | EXHIBITIONS | OUTREACH
beckcenter.org | 216.521.2540 x10



BOARD OF DIRECTORS – 2021 - 2022

Table with 3 columns listing Board of Directors members: M. Patricia Oliver (Chair), Douglas Hoffman (Immediate Past Chair), Lucinda B. Einhouse (President and CEO), Cynthia Brogan (Treasurer), Ellen Z. Todia (Secretary), Jane Christyson, Rosemary Corcoran, Syma Dar, Jenny Febbo, Chann Fowler-Spellman, Richard Fox, Frances Goins, Emily Jett, Angie Kazi, Sean Malloy, Kathleen McGorray, Ryan McKean, Mickey Mencin, Michael J. O'Brien, Barbara Paynter, Jeff Poore, John A. Reynolds, Bradford Richmond, M.D., Sandra Sauder, Brian Sinchak, William Spence, Corey Donovan Tracey, Thomas C. Wagner, Margaret G. Weitzel, and Michael Brown.

HONORARY DIRECTORS

Table with 2 columns listing Honorary Directors: Donald G. Bain, Jr., Deborah A. Bridwell, Ph.D., Ruth B. Bertrand, Nancy B. Calcott, David C. Estrop, Ph.D., Terry L. Jones, Andrew Killian, W. James Mayer, Jr., Patricia McNamara, William J. Schmitt, Ronald Waldheger, and Honorary - Ex-Officio: Marianne Monahan (President Beck Women's Board).

NATIONAL DIRECTORS

Alice Ripley Martin Savidge

MANAGEMENT TEAM

Table listing Management Team members and roles: Lucinda B. Einhouse (President and Chief Executive Officer), Scott Spence (Artistic Director), Megan DeFranco (Director of Development), Edward P. Gallagher, MT-BC (Director of Education), Julie Gilliland (Director of Marketing), Larry J. Goodpaster (Director of Finance & Operations).

ADMINISTRATIVE AND PRODUCTION STAFF

Table listing Administrative and Production Staff members and roles: Tracy Ammon, MT-BC (Associate Director of Creative Arts Therapies), Charles Battaglia (Development & Volunteer Coordinator), Tim Chrisman (Associate Technical Director), Sarah Clare (Associate Director, Theater Education), Mark DeVol (Technical Director), Danielle Doré (Pottery Studio Manager), Jennifer Feierabend (Annual Fund Manager), Melinda Glass, MT-BC (Music Therapist), Ann Huebner (Registration Support Manager), Jay'da Hall (Development Assistant), Tim Keehn (Facilities Manager), Ryan Lucas (Visual Communications Designer), Jessica F. McGrath (Assistant Director of Education), Linda Merchant Pearce (Gallery Coordinator), Michael Simile, MT-BC (Music Therapist), Melanie Szucs (Associate Director, Dance Education), Jake Tisdale (Accounting Assistant), Rennie Tisdale (Customer Service Manager), Erica Tkachyk (Senior Finance Manager), Alexandra Rovito, Justine Horning, Mary Taylor, Paige Smith (Customer Service Associates), and Andrew Flinn, Jacob Matthews, Alastair Stockdale (Facilities).

Act one begins



Beck Center for the Arts

... WITH INVESTMENT BY CUYAHOGA ARTS & CULTURE

Cuyahoga Arts & Culture (CAC) uses public dollars approved by you to bring arts and culture to every corner of our County. From grade schools to senior centers to large public events and investments to small neighborhood art projects and educational outreach, we are leveraging your investment for everyone to experience.



Your Investment:
Strengthening Community

Visit cacgrants.org/impact to learn more.



BERKSHIRE HATHAWAY

HomeServices
Lucien Realty

- Check your home's performance at:
www.HomeValuesInLakewood.Info
- CHRIS BERGIN
216.244.7175
Chris@ChrisBergin.com



Wetzler's
PHOTOGRAPHY

Advertising • Commercial • Editorial
216-771-1554 wetzlers.com



Waldheger Coyne

a legal professional association

“....All the best performers bring to their role something more, something different than what the author put on paper. That’s what makes theatre live. That’s why it persists.”

Stephen Sondheim

Gemini Tower I, Suite 550
1991 Crocker Road
Cleveland, Ohio 44145
440-835-0600

Assistive Listening Devices @ BECK CENTER

Assistive Listening Devices (ALDs) amplify and clarify sound by cutting down or eliminating ambient noise. Assistive Listening Systems are installed in both the Senney Theater and the Studio Theater and were completely overhauled during the summer of 2021 to improve sound quality and performance. Headsets may be used at any seat and, with the upgrade, induction neck loops are also now available for patrons who use hearing aids and cochlear implants with a “T” switch. **Ask your audiologist whether your hearing aid or cochlear implant has a “T” switch (telecoil) and how to use it with an assistive listening headset.**

Who can use an Assistive Listening Device?

Everyone! While induction neck-loops are only compatible with hearing aids and cochlear implants that include a “T” switch, the ear speaker can be used by anyone who wants a little volume boost.

Will the patrons next to me be disturbed by the Assistive Listening Device?

ALDs are designed to deliver sound directly to an individual and work using specific reserved radio frequencies so as to not conflict with any other devices or equipment in use by the theatre or our patrons. In addition, the ear speakers and the neck loops are designed to be as inconspicuous as possible. It's likely no one will even know you're using one.

Are Assistive Listening Devices available for every show and event at Beck Center?

YES! As long as the event is held inside the Senney or Studio Theater.

Do I need to request an Assistive Listening Device in advance?

You do not need to request an ALD in advance of arriving at the theatre and an ALD can be requested at any time during an event. ALDs are distributed on a first-come-first-served basis free of charge. You may request your ALD at the Customer Service desk in the Beck Center lobby.

Is there a cost for using an Assistive Listening Device?

No, ALDs are distributed free of charge on a first-come-first-served basis.

Do I need to sit in a specific place to use an Assistive Listening Device?

No, all of our ALDs will work from any seat in any of our three theatres.

Do you clean your Assistive Listening Devices?

Yes, we follow the manufactures maintenance recommendations and use antimicrobial wipes to clean all earpieces and neckloops when they are returned before placing them back into storage.

Do I need to arrive early to obtain an Assistive Listening Device?

While obtaining an ALD will not take very long, we strongly recommend that all patrons arrive AT LEAST 20 minutes before the performance to allow time to park, get to the theatre, and find your seat.

I have a hearing aid or cochlear implant, will an Assistive Listening Device work for me?

Induction neckloops are also now available for patrons who use hearing aids and cochlear implants with a “T” switch. Ask your audiologist whether your hearing aid or cochlear implant has a “T” switch (telecoil) and how to use it with an assistive listening headset. Patrons find this to be the best way to use the ALD's.

I have severe hearing loss, will an Assistive Listening Device work for me?

ALDs will generally help anyone who can understand normal conversation either without aid or with a hearing aid. For more severe hearing loss, an ALD alone may not be enough.

**Questions? Just call Customer Service at
216.521.2540 x10 or email boxoffice@beckcenter.org**

House Information

USE OF CAMERAS OR RECORDING DEVICES DURING THE PERFORMANCE IS PROHIBITED.

COVID SAFETY – All patrons are required to wear a proper face covering at all times. All patrons must provide proof of vaccination or negative COVID test and ID before entering the theater.

ACCESSIBILITY – Wheelchair ramps, an elevator, and accessible restrooms make all areas of Beck Center accommodating to all patrons. Theatergoers in wheelchairs should request seats in Row J.

BOX OFFICE HOURS – 9 a.m. to 8 p.m. Monday through Thursday; 9 a.m. to 5 p.m. Friday and Saturday; 12 p.m. to 4 p.m. Sunday; and open through intermission on performance dates. For ticket information visit beckcenter.org or call 216.521.2540 x10.

CELL PHONES – Please turn off all cell phones and audible devices as the sound and screen light are distracting to the audience and especially the cast. Texting is not permitted during performances. Copyrights strictly prohibit the photographing, audio or video recording of all productions. Cameras and cell phones may be confiscated.

LARGE PRINT PLAYBILLS – Are available upon request at our Customer Service desk.

FIRE – Exits indicated by red lights are the shortest route to safety. In case of an emergency, please walk to the nearest exit.

LOST & FOUND – Customer Service maintains a Lost & Found service as a courtesy to our patrons. Please report any misplaced items, lost or found, immediately.

PARKING – Convenient, free, on-site parking.

RECYCLING – Beck Center believes in recycling. If you decide to discard your playbill, bottles or cans, please do so in the designated recycling receptacles.

RESTROOMS – Restrooms are located on the ground floor near the garden court at the west end of the Galleria and on the second floor just outside the elevator.

SMOKING – Beck Center is a non-smoking facility. Smoking is permitted outdoors.

About Beck Center

Beck Center for the Arts is proud to be a part of Northeast Ohio's professional theater landscape. Like our colleagues Playhouse Square, Cleveland Play House, Dobama Theatre, and Great Lakes Theater, Beck Center has a letter of agreement with Actors' Equity Association. We hire professional actors from the Northeast Ohio region, including members of Actors' Equity. Specifically, we are a Small Professional Theater (SPT) based on the number of seats, number of our performances, and the maximum weekly hours of work we provide to actors. We are also a producing theater. We produce every show on our stages. Meaning we choose the play, cast and rehearse it, build the sets, props, and costumes, direct and perform the music, and design lights and sound, utilizing regional resources and talent, all for you, our valued patron of the arts. Thank you for supporting live theater!

Beck Center for the Arts
17801 Detroit Avenue, Lakewood, OH 44107

Lucinda B. Einhouse, President & CEO

Scott Spence, Artistic Director

presented by special arrangement with Music Theatre International, Inc., New York



book adapted by
**BOB MARTIN &
THOMAS MEEHAN**

lyrics by
**CHAD
BEGUELIN**

music by
**MATTHEW
SKLAR**

directed by
**SCOTT
SPENCE**

musical direction by
**LARRY
GOODPASTER**

choreography by
**MARTÍN
CÉSPEDES**

production stage manager
**LIBBY
WHITE***

set design by
**ADAM
ROWE**

costume design by
**BETTY
PITCHER**

light design by
**STEVE
SHACK**

projection design by
**BRITTANY
MERENDA**

sound design by
**CARLTON
GUC**

Based on the hit holiday classic New Line Cinema film by DAVID BERENBAUM

Originally produced by
Warner Bros. Theatre Ventures
In association with Unique Features

All authorized performance materials are also supplied by MTI.

www.mtishows.com

Sponsored by



Video or audio recording of this production is strictly prohibited.

**Members of Actors' Equity Association, the Union of Actors and Stage Managers*

Audience Note

This play will be performed with a 15 minute intermission. Runtime: 2 hours 20 minutes

Cast of Characters

Tim Allen*	Buddy the Elf
Merrie Drees	Jovie
Greg Violand*	Walter Hobbs
Neely Gevaart	Emily Hobbs
Owen Hill	Michael Hobbs
Lily Warner	Deb
Miguel Osborne	Macy's Manager
Tom Meyrose	Santa
John Lynch	Mr. Greenway

MALE ENSEMBLE: Maxwell Brodzinski, Patrick Carroll, Zane Gagliardi, Nathan Hoty, Jake Kleve, Reed Kruger, Mike Leahy, Mike Majer, Morgan Thomas-Mills

FEMALE ENSEMBLE: Antonia Cangelosi, Madison Chaitoff, Kayla Gerogosian, Jennifer Jarvis, Hope Kennedy, Christine May, Margo Tipping, Amy Wooley

YOUTH ENSEMBLE: Jordyn Freetage, Christian Lee, Corlyn Stauffer, Ella Stec, Sophia Tsenekos

Production Staff

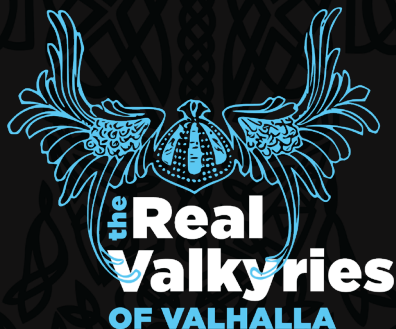
Artistic Director/Production Director	Scott Spence
Musical Director	Larry Goodpaster
Choreographer	Martín Céspedes
Production Stage Manager	Libby White
Assistant Stage Manager	Joy DeMarco
Assistant Stage Manager	Hayley Baran
Assistant Stage Manager	Jamie Benetto
Technical Director	Mark DeVol
Associate Technical Director	Tim Chrisman
Scenic Designer	Adam Rowe
Scenic Artists	Al Stockdale, Megan Mingus
Costume Designer	Betty Pitcher
Lighting Designer	Steve Shack
Assistant to the Lighting Designer	Paige Erickson
Projection Designer	Brittany Merenda
Sound Designer	Carlton Guc
Sound Mixer	Angie Hayes
Sound A-2	Spencer Mills
Assistant to the Master Electrician	Arwen Dorsey
Carpenters	Simon Sedmak, Joe Carmola, Tom Wang
Additional Paints	Allison Kressler
Follow Spot Operators	Mary Kahelin, Julia Aylward
Wardrobe Supervisor	Betty Pitcher

Orchestra

Reeds John Dokler, Karen Langenwalter, Keith Turner
 Trumpets..... Juan Ingram, Josh Krug, Meredith Evans
 Trombones Gabe Sagan, Eric Richmond, Vinnie Ciulla, Cherokee Miletti
 Bass..... Kevin Aylward, Shawn Brandt
 Keyboard Larry Goodpaster, Bryan Bird
 Drums & Percussion..... Bill Hart

Understudies

Maxwell Brodzinski..... for Buddy the Elf
 Hope Kennedy..... for Jovie
 Kayla Gerogolian..... for Charlotte
 Christian Lee..... for Michael Hobbs
 Madison Chaitoff..... for Deb
 Morgan Thomas-Mills for Macy's Manager
 Patrick Carroll..... for Santa, and Mr. Greenway
 Reed Kruger..... for Chadwick
 Mike Leahy..... for Matthews/Fake Santa



THE GODS MUST BE CRAZY!
 Runs December 10- 19, 2021
TICKETS: beckcenter.org

Beck Center
 -FOR THE arts-



BRILLIANT COSTUMES FOR

Matilda

THE MUSICAL

AND EVERYTHING ELSE!

Costume rentals from the Beck Center production are available now. We have a growing inventory of rental pieces to suit your needs, and can even take custom orders for that special something!

PROFESSIONAL FLARE FOR THOSE

REVOLTING CHILDREN!



BETTY'S COSTUME CREATIONS & RENTALS

Northeast, Ohio

www.bettypitcher.com

330.329.3505

[bettyscostumecreations@gmail](mailto:bettyscostumecreations@gmail.com)

Who's Who in the Company



SCOTT SPENCE

(Artistic Director/ Director)

is enjoying his 31st season at Beck Center! Since 1990, he has produced over 200 shows, directing over 100 himself. The list of favorites grows every season, and

includes *PARADE*, *A MAN OF NO IMPORTANCE*, *SWEENEY TODD*, *HAIR*, *PICASSO AT THE LAPIN AGILE*, *THE FARNSWORTH INVENTION*, *REEFER MADNESS*, *THE FIX*, *ZOMBIE PROM*, *BLOODY BLOODY ANDREW JACKSON*, *EVIL DEAD THE MUSICAL*, *THE 25TH ANNUAL PUTNAM COUNTY SPELLING BEE*, and the box office smash hits *THE PRODUCERS* and *ALTAR BOYZ*. Recently, Scott added to those favorites with productions of *CITY OF ANGELS* and *MATILDA*. He is very proud of the awards and acclamations Beck Center for the Arts has received over the past decade, and is especially grateful for having won the Northern Ohio Live Award for Achievement in Theatre in 2006. Outside of these walls, Scott's directorial assignments have included a remounting of Beck Center for the Arts' hit production of *ALTAR BOYZ* at Playhouse Square's beautiful Hanna Theatre, *DAS BARBECÜ* at Opera Cleveland, *THE LAST NIGHT OF BALLYHOO* at Case Western Reserve University's Eldred Theatre, *OH DAD POOR DAD....* at Cleveland State University Summer Stages, and *NOISES OFF* at both Weathervane Playhouse in Akron and Berea Summer Theatre. An adjunct faculty member at Cleveland State University, Scott has also had the privilege to direct Sartre's *NO EXIT* and Strindberg's *MISS JULIE*.

Scott holds an MFA in Directing from Western Illinois University and is a trained stage fight choreographer, having studied extensively with the SAFD. As always, he dedicates all the work he does to his two extraordinarily talented leading ladies, Rachel and Carleigh. You both amaze me every day.



MARTÍN CÉSPEDES

(Choreographer)

Choreography credits include *MAN OF LA MANCHA* at Porthouse Theatre, *BILLY ELLIOT*, *THE WILD PARTY*, *AMERICAN IDIOT THE MUSICAL*, *AS YOU LIKE*

IT & MUCH ADO ABOUT NOTHING for Great

Lakes Theater, *THE FANTASTICKS* at St. Louis Repertory Theater, *JANE EYRE* at Cleveland Musical Theatre, the Ohio premiere of Jose Rivera's *MARISOL* at Baldwin Wallace University. Performance credits include Broadway tours of *MAN OF LA MANCHA WITH* Jack Jones, Ron Holgate, David Canary, *THE KING AND I* with Hayley Mills, Marie Osmond, Faith Prince, *SOUTH PACIFIC* with Robert Goulet, *West Side Story* with Bebe Neuwirth, and *LE CID* with Plácido Domingo and the Washington National Opera, broadcast live from Kennedy Center. Television appearances include *NBC Dance Fever*, *Weekday Fever*. Concert performances with *Earth Wind and Fire* and *The Bee Gees*. Martin was awarded the 2018 Cleveland Critics Circle winner Best Choreography for *JANE EYRE*. 2019 Best choreography for *MAN OF LAMANCHAS* at Porthouse Theatre and was recently honored for artistic achievement at the 2019 Hispanic Leadership Conference. As an educator Martín has taught Broadway dance intensives for the School of Cleveland Ballet, and Theater Dance in NYC. He currently sits on the judge panel for Playhouse Square's Dazzle Awards. Martín is a proud member of Stage Directors and Choreographers Society, Actors Equity Association, American Guild of Musical Artists. Upcoming projects include *Something Rotten*, *Little Shop of Horrors*, and *West Side Story*. Love Marion, thank you Dr Flannery.



LARRY GOODPASTER

(Musical Director)

has been with Beck for 21 years having musically directed 82 productions since 1998. Outside of his music directing, Larry has been a fulltime employee at Beck

Center since 2009 and currently is Director of Business Strategy. Sharing both his creative talents and business acumen with Beck Center allows Larry to fully immerse in the world of the arts and arts education. He cannot thank our audiences and donors enough for supporting Beck Center's theater and education programming so generously to help ensure our legacy continues for another 85 years. "We couldn't do it without your support!"



LIBBY WHITE* (Production Stage Manager) is a Stage Manager by night and an educator by day. She has been involved with many Beck Center Productions over the past 20+ years.

She is grateful to be returning to the theater with such an amazing cast and crew this holiday season. Many thanks to her amazing stage management team and to her family for their patience and support.

CAST



TIM ALLEN* (Buddy the Elf) is an NYC based actor, professor, and director. He has studied extensively with the Great Lakes Michael Chekhov Consortium and is a certified teacher of the Michael Chekhov

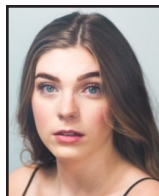
technique. Selected Credits: Off-Broadway/ NYC: PIRATE STORY (Snapple Theatre Center); MACBETH, (Witch I, Name of Bird); National Tours/Regional: ANNIE (Troika); THE GRINCH THAT STOLE CHRISTMAS, (Papa Who, Grand Ole Opry); THE WIZARD OF OZ (Scarecrow, Surflight); FIDDLER ON THE ROOF (Motel, Moonlight); Beck Center: MATILDA (Wormwood), LITTLE SHOP OF HORRORS (Seymour); SPELLING BEE (Leaf); SPAMALOT (Herbert, et al.). MFA Musical Theatre, SDSU. Professor of Acting: University of the Arts, San Diego State, CUNY City College and York College. This world can be harsh, but it's a good one! Despite it all, Buddy teaches us to be sure to Sparklejollytwinklejinglej all the way! Thank you for coming on this zany ride with us! @TimAllenTweet



MAXWELL BRODZINSKI (Ensemble) is a senior at Kent State University pursuing a BFA in Musical Theater. Some shows you may have seen Max in

are JOSEPH (Gad), DIRTY ROTTEN SCOUNDRELS' (Freddy), RAGTIME (Father), MAN OF LA MANCHA (Sancho),

ADDAMS FAMILY (Uncle Fester), IN PIECES (Ensemble/ u.s. Man 1), PARADE (male swing), and many more. This is his Beck Center debut. Max would like to thank his family and friends for all the support throughout the many years. He would also like to thank the cast and crew for making a safe and fun production during these weird times.



ANTONIA CANGELOSI (Ensemble) is current senior attending Kent State University to pursue a BFA in Musical Theatre with a minor in Marketing. Some of her favorite roles include:

Katherine Plumber (NEWSIES), Wendy (PETER PAN), Eponine (LES MISERABLES). Antonia enjoys fashion, photography, traveling and spending time with her friends and family. She would like to thank her amazing support system for her accomplishments in theatre and can't wait to continue on.



PATRICK CARROLL (Ensemble) has previously appeared at Beck Center in MARY POPPINS, YOUNG FRANKENSTEIN, ANNIE, WINGS, THE PRODUCERS, A MAN OF NO IMPORTANCE,

SEUSSICAL THE MUSICAL, 1776 , URINETOWN X 2, PARADE, THE FULL MONTY, YOU CAN'T TAKE IT WITH YOU and the record-breaking production of THE PITMEN PAINTERS in the Studio Theater! Patrick has appeared at Carousel Dinner Theater, Great Lakes Theater, Playhouse Square and in productions throughout Northeast Ohio over the past 44 years. He is a graduate of the American Musical & Dramatic Academy in New York City and when not on stage at Beck Center he is very proud to be an Independent "Licensed Massage Therapist" I'd like to dedicate this show to my friend Kevin Coughlin and loving wife and life time stage manager Diana.

ROCKY RIVER

CHAMBER OF COMMERCE

Stronger. Together.

The Rocky River Chamber of Commerce
remains resilient and connected, truly a
community of opportunity.

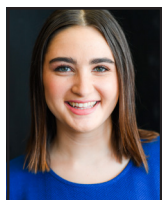


Learn more about all
the Chamber offers the
business community in
Northeastern Ohio,
connect by:

Phone :: 440.331.4410

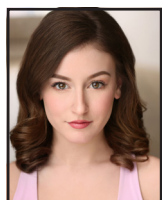
Email :: info@rockyriverchamber.com

Visit RockyRiverChamber.com
to apply for membership today!



MADISON CHAITOFF (Ensemble) is a Senior Musical Theatre major with a minor in Arts Entrepreneurship at Kent State University. Past roles include Nearly Wild in CONCORD FLORAL

(Sandefur Theatre), Kayla in the short film UNCLE (Happy Dog Studios), Lucille Frank in PARADE (Kent State University), and Kitten in ANY RESEMBLANCE (Kent State University). Next up, Madison can be seen in her final production at Kent State University in FREAKY FRIDAY as Gretchen running February 25- March 6, 2022. Enjoy the show! www.madisonchaitoff.com



MERRIE DREES (Jovie) Merrie is excited to be in her first show since moving to Cleveland with Beck Center. She is a Kent state musical theatre graduate and since then was on Nickelodeon's

national tour of Paw Patrol Live as Skye. credits include: Children of Eden (Eve), Little Women (Amy), Drowsy Chaperone (Kitty), It's a bird, it's a plane, it's.. Superman (Lois Lane) Allegro (Jenny), and many others. For Lois. Stay Gold. Instagram: MerrieDrees



JORDYN FREETAGE (Ensemble) is 15 years old and a sophomore at Jackson High School in their arts program. Some of her favorite theatre credits include SHREK (Young Fiona 2018, Teen

Fiona 2019/ Beck Center), DESCENDANTS (Mal/ Mercury Theatre Company), LITTLE WOMEN (Jo March/ Helen Todd Vocal Studio), SCHOOL OF ROCK (Summer Hathaway/ Weathervane Playhouse), SHREK (Teen Fiona, Ugly Duckling, Featured Dancer/ Players Guild), HE'S LOST HIS MARBLES (Soloist/ Baldwin Wallace Arts Management), and LES MISERABLES (Cosette/ Caryl Crane Youth Theatre). Jordyn would like to thank the entire cast and crew for this wonderful experience, her amazing vocal coach Helen Todd, and

all of her family and friends for their endless support! Dream In Gold. @jordynfreetage



ZANE GAGLIARDI (Ensemble) is from Pittsburgh, PA and is excited to make his Beck Center debut! He is in his third year at Baldwin Wallace University studying Acting & Directing with a

minor in Dance. Favorite credits include: A CHORUS LINE (Paul, Dance Captain), SINGIN' IN THE RAIN (Don Lockwood u/s), and BYE BYE BIRDIE (Albert, Dance Captain). He would like to thank Scott, Martin, Larry, Libby and the rest of the production team for their hard work and guidance. Zane would also like to thank his friends and family for their endless support. He hopes you enjoy the show!



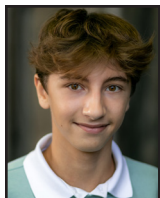
KAYLA GEROGOSIAN (Ensemble) is a senior at Kent State University's Musical Theatre program. She was recently seen at The Barn Theatre in 9 TO 5 (Judy Bernly), THE

SPONGEBOB MUSICAL (Gary), THE WEDDING SINGER, and MAMMA MIA! She also has been seen in CHAPLIN: THE MUSICAL (Mildred Harris) at Mercury Theatre Company and 365 DAYS/365 PLAYS at Kent State University. She would like to thank her parents, friends, and family for their constant support. Twitter and Instagram: @kaylagerogosian



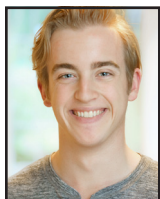
NEELY GEVAART (Emily Hobbs) was last seen on the Beck Center stage as Percy in THE SPITFIRE GRILL and in the ensemble of THE PRODUCERS. Some past favorite shows include: VIOLET, THE LIGHT

IN THE PIAZZA, AMELIE, WE WILL ROCK YOU, and TEXAS CHAINSAW MUSICAL! All my love to Christopher and Taco.



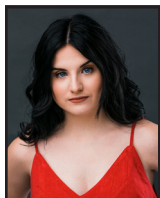
OWEN HILL (Michael Hobbs) has been performing since the age of 7 at various theaters in the Cleveland area. Most recently he appeared in SHREK THE MUSICAL (Baby Bear) and MATILDA THE MUSICAL

(Nigel) at Beck Center for the Arts. Other past favorite credits include THE ADDAMS FAMILY (Pugsley Addams) at Near West Theatre and THE WHO'S TOMMY (Young Tommy) at Blank Canvas Theatre. In 2020, Owen attended Broadway Artists Alliance Winter Workshop in NYC. There he had an incredible opportunity to receive training from Broadway performers in Hadestown, Hamilton, and Wicked. Owen expresses sincere gratitude to Scott, Larry, and Martin for this amazing experience! Live theatre is back...AT LAST! Thank you for coming and enjoy the show.



NATHAN HOTY (Ensemble) is born and raised in Sandusky, Ohio. He is a senior BFA musical theatre major and dance minor at Kent State University. Nathan started

performing at the age of 10 and knew it's what he wanted to do for the rest of his life. When not on stage Nathan works as a personal trainer training other performers to feel confident in themselves on stage and off. Nathan wants to thank his grandma for first inspiring him to get on stage.



JENNIFER JARVIS (Ensemble) Jennifer Jarvis is an actor from Atlanta, GA, currently in her second year at Baldwin Wallace University working to earn her Bachelor's of Fine Arts in

Acting. Some of her previous roles include INTO THE WOODS (The Witch) SILENT SKY (Henrietta Leavitt) DEVISED BLUES: UNCUT AND FUNKY (Ensemble.) She would like to thank her friends, family, and roommates for their continuous love and support.



HOPE KENNEDY (Ensemble) Previous credits include SISTER ACT at Players Guild Theatre, THE MUSIC MAN at The Ohio Light Opera, and 35MM at Kent State University. Hope is currently a senior at Kent

State, dual majoring in Musical Theatre and Biology. She would like to thank her friends, family, and the cast and crew of ELF for their support!



JAKE KLEVE (Ensemble) is making his debut at Beck Center! He is a Sophomore Musical Theatre major and dance minor at Kent State University. In his free time, you can find Jake at the

Target in Stow, Ohio working up front, playing trumpet, guitar or piano, or probably yo-yoing. Jake is very excited to be back on stage live and in person! Jake would like to thank the Beck Center for their safety protocols during the rehearsal process. Jake would also like to give a big thanks to his friends and family for their continuous support on and off stage.



REED KRUGER (Ensemble) is currently a senior Acting and Directing major at Baldwin Wallace University, and is so ecstatic to be making his Beck Center debut! Some of his favorite

past credits include MARGINALIA: AN INTERPLAY WITH EDGAR ALLAN POE (Raven), THE MODERN PROMETHEUS (Storyteller A), and TROILUS AND CRESSIDA (Pandarus/Menelaus). You may have also seen him this past summer in MACBETH at Chagrin Arts (Ross). He hopes you enjoy the show, and may your holiday season be absolutely sparklejollytwinklejingly!

Savoir-Faire Magazine

**Highlighting Small & Minority
Owned Businesses
Since 1997**



Daphney Grier,
Editor & Publisher

www.sfmag.biz
daphney@sfmag.biz
800-581-5950

We are specialists in
Affordable Diversity
Marketing & Advertising

*Congratulations to the Beck Center for another
wonderful season!*



You Belong

AT

BEAUMONT

Now Accepting Applications

[BEAUMONTSCHOOL.ORG/APPLY](https://www.beaumontschool.org/apply)

WHERE YOUNG WOMEN LEARN TO CHANGE THE WORLD

B Beaumont
School



International Baccalaureate
World School

A Catholic school in the Ursuline tradition educating women for life, leadership and service.

[BEAUMONTSCHOOL.ORG](https://www.beaumontschool.org)



MIKE LEAHY (Ensemble)

is currently a senior at Kent State, majoring with a BFA in Musical Theatre. He has recently performed on Kent State's stage as Mr. Peavy in PARADE, Francis and Mr. Tuplin in TUESDAYS AND

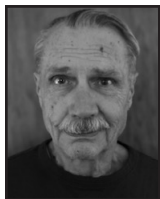
SUNDAYS, The Governor in HUNCHBACK OF SEVILLE, Matt in ANY RESEMBLANCE and Shem in CHILDREN OF EDEN. He has performed in Pittsburgh in North Allegheny's 42ND STREET, CINDERELLA (ensemble), LEGALLY BLONDE (Callahan), and THE LITTLE MERMAID (King Triton). He has done the following North Allegheny plays: MURDER CAN BE HABIT-FORMING (Torch), RUMORS (Cooper), and ALMOST, MAINE (Jimmy/Phil). He has also performed in community theatre in Wexford Acting Studio's OKLAHOMA (Jud understudy) and LES MISERABLES (Joly, Marius understudy). Mike would like to thank his family and friends for the constant loving support. He would also like to thank the cast and production team for being absolutely wonderful to work with during these strange and difficult times. Instagram and Twitter @nicemike_2000 and come see him as Mike in Kent State's production of FREAKY FRIDAY coming this spring!



CHRISTIAN LEE (Ensemble)

absolutely loves being on stage. He started with piano performances at the age of 4 and quickly moved into performing/acting on stage at the age of

9. He has appeared in over 11 shows, including LITTLE TECH SHOP OF HORRORS, THE TRIALS OF ROBINHOOD, CINDERELLA, and SUJESSICAL THE MUSICAL, for which he won the Ohio Youth Arts Award for Best Young Actor in a Musical in 2019. Some of his favorite roles, however, have been when he gets to perform as Elvis Presley - or even his Christmas counterpart, "Eflis Presents."



JOHN LYNCH (Mr. Greenway)

has appeared in productions with the Cleveland Shakespeare Festival, Cleveland Public Theater, The JCC, Karamu and

other theaters in the area. Here at Beck some of the shows in which John's appeared are MY FAIR LADY, TWO BY TWO, BURIED CHILD, BIG RIVER, PARADE and IS HE DEAD?



MIKE MAJER (Ensemble)

Social Worker by day, Mike last appeared at Beck Center as John Quincy Adams in BLOODY BLOODY ANDREW JACKSON. Other credits include performances

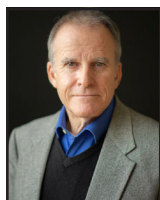
with: North Coast Men's Chorus, Cleveland Public Theater, Convergence Continuum, and Sandusky State Theater. Enjoy the show!



CHRISTINE MAY (Ensemble)

This is Christine's first show at the Beck Center! Some previous favorite roles include: Lisa in MAMMA MIA at the Cassidy Theater; Simeon in TECHNICOLOR DREAM COAT

and Mor-risman/Inventor in CHITTY CHITTY BANG BANG with Mighty Goliath Productions; and Marcy Park in PUTNAM COUNTY SPELLING BEE at Valparaiso University. Her other creative pursuits include co-hosting the horror/comedy/improv podcast "Dread and Breakfast" with three of her best friends, directing Kids Church Online at Bay Presbyterian Church, and writing away on her upcoming debut novel. You can also catch her this February as a Storyteller in CHILDREN OF EDEN with Mighty Goliath Productions. Thank you to Dr. Wooley for helping me find my voice.



TOM MEYROSE (Santa)

has been the Master of Ceremonies for The Lake Erie Crushers baseball team in Avon since 2016. Past stage roles include Gomez Addams THE ADDAMS FAMILY, Man in Chair THE DROWSY

CHAPERONE, Felix Unger THE ODD COUPLE, & John Adams 1776 to name but a few. He has also been on-air talent at WVIZ-PBS and WCPN. Thanks to Laurie for the "push". He wishes everyone a happy holiday season.



**MIGUEL OSBORNE
(Macy's Manager)**

is happy to return to Beck. Last seen as Streetsinger in BKLYN at Porthouse Theater. has 45 years of experience in the performing arts, as well as 15 years in the fashion and

custom design industry with his fashion line Azadi Unique. He has developed an extensive background in ensemble production such as The world goes round, Ain't Misbehavin, Once on this island and Smokey Joe's Café. He also served as background vocal director for Soul Sounds. Miguel has also secured leading roles in Dreamgirls, Victor Victoria, Shelly Garrett's Laundromat, 6° of separation and the first national tour co of RENT. He has performed for spirit cruises and many tourists overseas, background vocals with a London idol and shared the screen with Nelly, Dean Winters, Zoe Saldana, Bruce Willis, Pamela Anderson, Dustin Nguyen, Madeline Stow and the late Grover Washington Jr. Thanking his Heavenly father and Earthly mother for his many gifts.



**CORLYN STAUFFER
(Ensemble)** has performed throughout Ohio with Cleveland Playhouse, Renaissance Theater, Great Lake Theatre, Near West Theater, Western Reserve Playhouse, and 82nd

Theatre. Favorite roles include MATILDA THE MUSICAL (Matilda), CHRISTMAS STORY (Esther Jane), MARY POPPINS (Jane Banks), FROZEN (Young Anna), DISNEY NEWSIES (Les), and AROUND WORLD IN 80 DAYS (Phileas Fogg). Also seen in tv/film; GHOST ADVENTURES (Illegitimate Child), DRIVE (Young Stella), HUES (Young Amelia) and BRAVE (Jackie). She is also a competitive dancer for 10+ years and favorite styles of dance are jazz and musical theater. Family, friends, coaches, and agents who continue to show up and support she is always indebted. Instagram: @corlymarie



ELLA STEC (Ensemble) returns to the Beck stage where she last performed as Matilda in MATILDA THE MUSICAL. Other theatre credits include A CHRISTMAS STORY (u/s Esther Jane, Helen) at Cleveland Play

House, GYPSY (Ensemble) at Beck Center for the Arts, ANNIE (Kate) at AURORA COMMUNITY THEATRE, and TO KILL A MOCKINGBIRD (Scout) at Weathervane Playhouse. Ella thanks Scott, Larry, Martín, and the entire creative team for all of their hard work behind the curtain. A special shoutout to her very own supporting cast of family and friends who love her on stage and off! Love ya right back!



**MORGAN THOMAS-MILLS
(Ensemble)** is an Ohio native who has worked on stages all over the state and across the country. He is very happy to be returning to the stage, and this show

will mark his first time being at The Beck Center. He has recently been seen as Pete The Cat at Columbus Children's Theater, Crutchie in Newsies and the Barber in Man Of La Mancha (both at Porthouse Theater), and ensemble roles in California's "Missouri Street Theater" and "CCMT". Morgan is also frequently heard in the orchestra pit playing guitar and/or bass, and was a member of Columbus Children's Theater's touring company and resident artist program for 6 years. He is also the main force behind the recording project "Greyvoice". He wants to thank his parents and siblings, Martin, and Scott



**MARGO TIPPING
(Ensemble)** is making her Beck Center Debut in ELF THE MUSICAL! Margo is a current sophomore at Kent State University pursuing a BFA in Musical Theatre. Margo is no

stranger to the Cleveland theatre scene. In 2019, Margo won the Dazzle Award for Best Leading Actress in a Musical for her performance as Irene Molloy in HELLO, DOLLY! This resulted in her representing Northeast Ohio at the Jimmy Awards at the Minskoff Theater in New



Aladdin's eatery.

Aladdin's Eatery Lakewood is proud to be a
sponsor of Beck Center For The Arts

Something for everyone!

40
vegetarian
dishes

30
vegan
dishes

40
gluten-free
dishes

40
meat
dishes



Dine In ■ Carry Out ■ Catering

Order online at www.aladdinseatery.com



14536 Detroit Ave., Lakewood, OH 44107 | 216.521.4005

York City. Margo is so excited to get back on stage following her pre-COVID roles as: Rosalie (SCHOOL OF ROCK), Mary Magdalene (JESUS CHRIST SUPERSTAR), and Mary Poppins (MARY POPPINS). She would like to thank Scott, Martin, Larry and the rest of the Beck Center team for making her first live show in two years the most enjoyable ever. Happy Holidays and enjoy the show!



SOPHIA TSENEKOS (Ensemble) Sophia's theater credits include MATILDA THE MUSICAL (Matilda) The Beck Center for the Arts. Sophia has also been seen on stage in several productions

at The Players Guild Theatre which include: RAGTIME (Little Girl), A CHRISTMAS CAROL (Fan, Belinda Cratchit), SHREK (Young Fiona), THE LITTLE MERMAID (Ensemble), JOSEPH and the AMAZING TECHNOLOGICAL DREAMCOAT (Children's Ensemble). THE SOUND OF MUSIC (Marta) WJHS Center Stage. Sophia also performed virtually among over 40 Broadway actors as a featured vocalist in "I MISS THE MUSIC" Broadway Salutes the Erie Playhouse benefit concert. She thanks her family and friends



GREG VIOLAND* (Walter Hobbs) Greg Violand, (Walter Hobbs) at Beck: THE SCOTTSBORO BOYS (Interlocutor), CITY OF ANGELS (Buddy Fidler), XANADU (Danny Maguire), THE UNDERPANTS (Theo

Maske), URINETOWN (Caldwell B. Cladwell), 1776 (John Adams), LACAGE AUX FOLLES (George), A DOLL'S HOUSE (Torvald Helmer). Other performance venues The Cleveland Play House, Great Lakes Theatre, Playhouse Square, Cain Park, Dobama, Lakeland Summer Theater, Actor's Summit, Ensemble, Cleveland Opera, Cleveland Lyric Opera, JCC Halle, CSU Summer Stages, The Eldrid Theater, Virginia Musical Theater and Metro Stage in Washington DC. Film and TV: DARK WATERS, BATMAN V SUPERMAN (DAWN OF JUSTICE), CAROL, THE ASSASSINS CODE, THE TOYBOX, MY BLIND

BROTHER, JENNY'S WEDDING, CLOWNTOWN, CHICAGO FIRE (NBC) DODGE & MILES (Quibi). SAG-AFTRA, AEA, Kent State Alum (MFA) Adjunct Professor Lakeland CC



LILY WARNER (Deb)

Beck Center debut!
Regional: THE BRIDGES OF MADISON COUNTY, WOMXN ON FIRE FESTIVAL (The Keegan Theatre); MY FAIR LADY, EVITA, CAT IN THE HAT (Riverside

Theatre); DRINKING HABITS, World Premiere of GUARADED (Pioneer Playhouse). TV: THE COMEY RULE (Showtime). Proud alum of James Madison University, BA Theatre Performance. Endless thanks to Scott for welcoming me into the Cleveland theatre community! This one's for the guy who called me at the age of 8 pretending to be Buddy the Elf. All my love to God, Canaan, Mom, Dad, Hannah, Sailor, and Obie. Merry Christmas to all! Theatre is BACK!
Insta: @sillylily8 / Website: lily-warner.com



AMY WOOLEY (Ensemble)

is a teacher at Beck Center. Having grown up in Lakewood, being on the Beck stage is a homecoming after a career as a singer-songwriter, (MCA, nomination by

the Academy of Country Music), a PhD from UCLA, (Carol Burnette Award for musical theater performance, BMI University Show Award for her original musical, "USO.") Roles include Mary in "Merrily We Roll Along," Cleo in "Most Happy Fella," Wanda Mae in "USO," (UCLA), Alto in "Side by Side by Sondheim," (Santa Monica College), and Katisha in "The Mikado" (Lakewood High School). Her work as a composer/arranger and music director includes "Oklahoma," directed by Bill Rauch, and "Hairspray," (Oregon Shakespeare Festival), and "Swinging for the USO," (The Culture House, Kansas).

PRODUCTION

JOY DeMARCO (Assistant Stage Manager)

Beck Center credits include MARY POPPINS, BILLY ELLIOT, RUTHLESS, CITY OF ANGELS, ONE FLEW OVER THE CUCKOO'S NEST, GYPSY, SHREK, and MATILDA. Joy also stage manages for Beck Center Youth Theatre. Other area stage management credits include PICASSO AT THE LAPIN AGILE and SIDE SHOW at Blank Canvas Theatre, MAN OF LA MANCHA and SONGS FOR A NEW WORLD at Academy for Dramatic Arts, and MY WAY, THE 39 STEPS, and THE ADDAMS FAMILY at Huntington Playhouse. Joy received a Kennedy Center American College Theatre Festival Certificate of Merit for her dramaturgy work. Endless thanks to her family for all of their support.

HAYLEY BARAN (Assistant Stage Manager)

Over the last 19 years, Hayley has been "seen" backstage in a variety of positions including follow spot operator, light board operator, and run crew. She was last seen as the Stage Manager for GLENN GARY GLEN ROSS and Assistant Stage Manager for MATILDA. Other favorite shows have included BENT, WAITING FOR GODOT, and FOREVER PLAID, where she had an on-stage cameo as the Nice Box Lady. Thank you to the wonderful cast and crew for making this such a positive experience.

JAMIE BENETTO (Assistant Stage Manager)

Recently stage managed: THE EXONERATED, THIS GIRL LAUGHS, THIS GIRL CRIES, THIS GIRL DOES NOTHING, SHREK: THE MUSICAL, MY FIRST TIME, ONE FLEW OVER THE CUCKOO'S NEST, THE LITTLE MERMAID (both years), RUTHLESS!, THE SPITFIRE GRILL, HEATHERS: THE MUSICAL. She also works with Beck Center Youth Theater. Jamie has worked at Cleveland Play House as an Assistant Stage Manager and Production Assistant for RABBIT HOLE, PRIDE AND PREJUDICE, DREAM A LITTLE DREAM, AND CROWNS and GOOD PEOPLE. Other area credits include Ntozake Shange's WHY I HAD TO DANCE at Oberlin College and Playhouse Square, THE SECRET GARDEN at Cain Park, and INTO THE WOODS and THE SEAGULL at Great Lakes Theater.

STEVE SHACK (Lighting Designer) is a nomadic lighting designer whose most recent work has been seen in Hilo, Boston, Traverse City, Cleveland, and NYC. Over the past 19 years, he has lit over 200 various productions of Musical Theater, Opera, Dance, and Drama in addition to a few restaurants, museums, and installations. Steve is the Resident Lighting Designer at Cleveland Opera Theater, Hawaii Performing Arts Festival, and Magnificat High School. Often, during summer he teaches and designs lighting at the French Woods Festival of the performing arts. When not in the theater he prefers to body surf in the pacific ocean and work with the 'aina of the Big Island.

BETTY PITCHER (Costume Designer) is the Wardrobe Manager and Costume Rental Coordinator at the Beck Center. Her Beck Center credits include: MATILDA, SHREK, GYPSY, LITTLE MERMAID, TRIALS OF ROBIN HOOD, SEUSSICAL, CINDER-ELLA, LARAMIE PROJECT, ALL GREEK TO ME, SNOW WHITE'S ADVENTURES, and SCHOOL HOUSE ROCK LIVE. She has been a costume designer for more than 12 years and has created custom costume pieces for Beck Center for the Arts, Player's Guild, Chagrin Valley Little Theatre and North Canton Playhouse. Betty would like to thank her son, Jeremy for "volunteering" her to "help" all those years ago. Betty's Costume Creations & Rentals (BCCR)

TIM CHRISMAN (Lighting Designer) is a graduate of the Technical Theatre program of Texas State University. Before the Covid-19 pandemic, Tim was a recent addition to the Beck Center for The Arts professional theater staff, filling the role of Associate Technical Director and in house Lighting Designer. He is very excited to contribute to the revival of live theatre for the patrons of Beck Center and the Greater Cleveland area.

ADAM ROWE (Scenic Designer) Production Designer for television on Good Sam, Rizzoli & Isles, Dexter and Criminal Minds. He earned an Emmy for his work as the Art Director for RENT Live on Fox and a THEA Award (theme park entertainment) for the Universal Studios Japan Nighttime Spectacular Parade. He also art directed for The Good Place, Forever, Mr. Mayor,



LIZZIE

THE MUSICAL

A MUSICAL WITH AN AXE TO GRIND

Runs February 4 – 27, 2022

TICKETS: beckcenter.org



Get **\$100** for each new customer you refer

With our business referral program, Cox Business will give you \$100 for each referral you provide that becomes a new, qualifying customer.



**To make a referral,
visit coxbusiness.com/referabusiness**

Offer valid for current Cox Business customers, referring new commercial customers in Cox-wired serviceable locations. Cox Business reserves the right to change or discontinue offer at any time. Services not available in all areas. Additional restrictions apply. © 2019 Cox Communications, Inc. All rights reserved.

COX
BUSINESS®

MTV VMAs, Home Economics, XQ Super School LIVE, American Crime Story: Versace, Parks and Recreation, House M.D and the broadcast of the Democratic National Convention in 2008. Other TV projects: The Last Tycoon, Love Bites, iCarly, Victorious, Mad Men, 81st Academy Awards, The Golden Globes, Kennedy Center Honors and Super Bowl XLII. His theatrical scenic art and set design credits include Open Fist Theater, California Rep, Seaside Music Theater, Santa Fe Opera, Denver Center Theater Company, Indiana Rep, La Jolla Playhouse, A Noise Within, The Omaha Theater Company, Macleod Summer Playhouse, and numerous traveling museum exhibits.

BRITTANY MERENDA (Projection Designer)

is an award-winning projection designer based in Traverse City, Michigan. She received her Masters of Arts in Digital Arts and Sciences from the University of Florida specializing in projection mapping on non-traditional surfaces and received a Barbizon Award for her projection design work in **DARK PLAY, OR STORIES FOR BOYS**. This is Brittany's debut with Beck Center. Recent works include **ELF** and **NEWSIES** at The Rose Theater, **LA FINTA GIARDINERA** at University of Tennessee Opera Theatre, **GLORY DENIED** at Baldwin Wallace

University, **MAGIC FLUTE** at Lakes Area Music Festival, and **SWEENEY TODD** at Hawaii Performing Arts Festival. Brittany's designs can be seen in the upcoming productions for **THE RAKE'S PROGRESS** at Baldwin Wallace, **LA TRAVIATA** at Cleveland Opera Theatre, **MATILDA** at The Rose Theatre, and this summer with Hawaii Performing Arts Festival for **COMPANY**, **THE TRAGEDY OF CARMEN** AND **A MIDSUMMER NIGHT'S DREAM**.

ANGIE HAYES (Sound Mixer) has designed and mixed sound for productions at many area theaters, colleges, and high schools. She has also recorded and sound designed for several podcasts, including **SIDEWALK**, **MUNCHEN, MN**, and a radio play series for The Endangered Species Theatre Project of Frederick, MD. She has a Bachelor Degree in Music from the University of Wisconsin Oshkosh, with an emphasis in Recording Technology and Music Business.

**Members of Actors' Equity Association, the Union of Actors and Stage Managers*



ALL EYES ON YOU: BE THE STAR OF OUR PLAYBILL

Our flexible options allow you to reach **35,000+** potential audience members while supporting the arts in your community. Advertising rates start at just \$150. Place your ad for specific productions, or for the entirety of our theater season.

Contact Director of Marketing, Julie Gilliland at jjilliland@beckcenter.org for more information.

Beck Center Annual Contributors

During this season of giving, we gratefully acknowledge the support of the following individuals, corporations, foundations, governments, and organizations which have made contributions to our Annual Fund to Beck Center for the Arts in support of our mission to inspire, enrich, and transform through dynamic arts experiences. From our Beck family to yours, thank you!

The current listing includes donors of \$100 or more from August 15, 2020 through November 15, 2021. We greatly appreciate all of our supporters and apologize for any errors or omissions. For any corrections or more information on the benefits of these giving circles, please contact our Director of Development, **Megan DeFranco, at mdefranco@beckcenter.org 216.521.2540 x18**

INDIVIDUALS, FOUNDATIONS, CORPORATIONS AND ORGANIZATIONS

LEADERSHIP CIRCLE

(\$10,000 and above)

Dale and Cindy Brogan
Milan G. Busta*
The Cleveland Foundation
Community West Foundation
Cuyahoga Arts and Culture
Cuyahoga County
The William R. Daniels Memorial Fund
Dorn Family Foundation
The Char and Chuck Fowler Family Foundation
Chann Fowler-Spellman and Ed Spellman
Kulas Foundation
The Vida C. Logan Fund
Ryan and Alysia McKean
John P. Murphy Foundation
Michael and Carol O'Brien
Ohio Arts Council
Pat and Jim Oliver
The Reinberger Foundation
Brad and Margaret Richmond
Sandy Sauder
Vivian H. Schulze Trust
Small Business Association
State of Ohio
Three Arches Foundation

FOUNDER'S CIRCLE

(\$5,000 to \$9,999)

The George W. Codrington Charitable Foundation
FGI Foundation
Joan Alice Ford
Harry F. Fox and Emma R. Fox Charitable Foundation
Jackson Lewis P.C.
Terry and Dona Jones
Betty Kemper
The Nord Family Foundation
Lee and Maria Parks
Barbara & Bob Paynter
John A. Reynolds
Sherwin Williams Foundation
Kevin Smith and Cassandra Simon
Jean Stell
Ellen Todia and David Matthiesen
Landon Tracey and Corey Donovan Tracey
Turner Construction Company

BENEFACTOR'S CIRCLE

(\$2,500 to \$4,999)

Anonymous (2)
Carol Barnak
Michael and Leslie Brown
Mary Anne and Byron Crampton
The Cyrus Eaton Foundation
Development Services Agency
Eaton Charitable Fund
Jenny and Ralph Febbo
Richard and Judy Fox
Gregory Good and Adrienne Embery-Good
William Garrison and Mary Jo Mlakar
Charles and Marie Grossman
Charles and Nancy Gustafson
William C. Hartman
Jim Hayes & Madeline Muser Hayes
Karol Hoeffler
Doug Hoffman and Ron Stach
Emily Jett and Mark Getsay
The Laub Foundation
Bill and Joyce Litzler
Kathleen McGorray and Bob Soffer
Nancy and John McMillan
Mickey and Larry Mencin
Dave and Traci Nolan
Nordson Corporation Foundation
Protiviti Inc.
Quality Control Services LLC
Jeffrey and Susan Ritter
Sherwin-Williams Company
Bill Spence
Mr. and Mrs. John Steinbrunner
Thomas J. Coltman Foundation
Ulmer and Berne LLP
Thomas Wagner and Malinda Smyth

CHAIRMAN'S CIRCLE

(\$1,000 TO \$2,499)

Rachel Abernethy
State Senator Nickie Antonio and Jean Kosmac
Anonymous
Sean and Erin Arbeznik
Elise and Steven Auvil
Mark Bartlett
Kathleen A. Baskoff and Steven Schwarz
Gregory and Susan Bergmann
The Bonne Bell Family Foundation

Curt Brosky and Betty Tereck
Sarah J. Buck
Georgia A. Burley
Eddie-Lou and Lew Bush
Nancy and Jack Calcott
Jane Christyson and Robert Mahoney
Connie and Hal Cooper
Rosemary Corcoran
Syma Dar
Michael and Amy Daso
Mary Beth and Jeff DeClerck
Steve DeJohn
The Dominion Energy Charitable Foundation
Cindy and Tom Einhouse
The Foell Family
Cindy and Tim Friedmann
Michael Fulton
Thomas Gehlbach and Warren Stauffer
The Giant Eagle Foundation
Gary and Frances Goins
Kathy and Ken Haber
Barbara and Bob Hall
Harold L. and Patricia D. Williams Charitable Fund
David and Cheryl Jerome
Gary and Rose Juhnke
Kim and Nora Katzenberger
Andrew L. Killian
Nancy C. Krueger
Lakewood Arts Festival
Lakewood-Rocky River Sunrise Rotary Club
Jay and Sally Magee
Sean Malloy
Freida McGee and Michael Wochna
Melt Bar & Grilled
Tim and Megan Milanich
Colin and Sarah Moeller
Brian Murphy
The Music and Drama Club
David and Inez Myers Foundation
Larry Nance Jr.
Deborah L. Neale
Rebecca Niemiec
Dr. and Mrs. Peter Nintcheff
Deborah and John O'Neill
Jim and Barbara Pearce
Tim Penton and Jay Gardner
Amy and Tom Petrus

Mike and Lori Petti
Jeff and Nora Poore
Renaissance Charitable Foundation,
Inc.
Karen Rockhold
Patrick and Angela Rollins
Eugene and Marge Ruminski
Patty and Jim Ryan
William and Susan Schmitt
Galen Leigh Schuerlein, Esq.
Astri Seidenfeld
Brian Sinchak
Donna Rae and Edward Smith
Stephanie Spahr
Ann Spence
David Priest
Sweet Designs
Kenneth and Martha Taylor
The Wonderful Company Foundation
Jonathan Ward
Joe and Kathy Ward
Mary C. Warren
Margaret Weitzel
Michael Wightman
Dave Willett and Steve Meka
Women's Board of Beck Center
Jason and Gretchen Woods
Laird and Jennifer Wynn
Genny Zarnick

PRESIDENT'S CIRCLE
(\$500 TO \$999)

Joel and Teresa Andreani
Anonymous
AXA Advisors LLC
The Bay Foundation
George and Sandra Berendt
Frederick Bidwell
Bill and Janet Bird
DeDe and Bruce Burton
Robert and Mary Calsin
Mary Beth Campbell and Mark Sisteck
Douglas Cass
Charities Aid Foundation of America
Chipotle Mexican Grill
A.J. Cianflocco and Mary Anne Garvey
Beverly Coen
Craig and Jan Cook
Doug Cooper
Megan DeFranco
David Delgado and Linda Springer
Robert Deline
Sherrie Desmond
Dewey's Pizza
Joel and Bonnie Egertson
Sara and David Fagnilli
Jon and Mary Fancher
Jennifer Feierabend
Mary Eileen Fogarty
Pam Gallagher
Bill and Jayne Gaydos
Goodman Real Estate Services Group,

LLC.
William Gorton and Susie Blackburn
Joan and Tom Hartshorne
John and Mary Kay Jefferson
Jewish Federation of Cleveland
Karen Skunta & Company
Cathy Khandelwal
S.C. Kirkland
Edward Knotek
Gerrit and Peg Kuechle
Latham Family
Matt and Angela Lay
Steven M. Licciardi
David and Susan Lorenz
Tony Marini
James and Ellen Marsey
Rick and Jane Nash
Peggy and Dominic Perry
John and Norine Prim
Judy and John Pyke
Raising Cane's
Tom and Helen Rathburn
Martin Saltzman
Richard and Mary Sanders
Mary Lynne and David Slife
Michael and Michelle Smith
Pam and Tom Smith
Jan Soeder
Timothy C. Stevens
Elizabeth Stirling and Tom Millward
Timothy and Debra Swartz
James and Marilyn Taylor
Karen Tolhurst
Martin and Laura Uhle
Sara & Jason Verderber
Gina Vernaci and Bill Hilyard
Jim Vine
Maureen and Raymond Votpyka
Benjamin and Melanie Whiting
Judith and Walter Wright
Janice Young

DIRECTOR'S CIRCLE
(\$250-\$499)

Dena and Daniel Adler
Thomas and Joann Adler Family
Philanthropic Fund
Cathy and John Aldrich
Mark J. & Bonnie O. App
Robert Bade and Linda Hurley
Dede Baker
David Bennhoff
Ruth B. Bertrand
Linda M. Betzer and Iris Bishop
Martha and Wayne Bifano
Amy Holtshouse Brennan
Marianne Byrne
Janice and Jack Campbell
Patrick Carroll and Diana D'Alessandro
Deborah Clare Laub
Mike and Jacque Coyne
Elizabeth Cross

Carol Crowe
Judy and Steve Fesko
David V. Foose
Mr. and Mrs. Barry Glazer
Julia Harding
Louise B. Herrick
Gail Jackson
James Keely
Jack and Kimberly Kellogg
Stanley W. Kline
Barb and Charlie Koch
Mark and Jo Anne Larkman
Lynn and Mary Lazzaro
William Lohn
Jay Marshall
Pat and Tina Miller
Michael and Peggi Mizen
Thomas Murphy
Michelle Napolitan
Larry and Shelly Napolitan
James Oliver
Glending Olson and Hester Lewellen
Eileen Pappalardo
Eileen Paskert
Timothy and Jen Powers
Heather Richmond
John J. Ritchey
Mary Roach
Barbara S. Robinson
Laurie and Jim Rokakis
Keith and Donna Rush
Ron Rydarowicz
Dorothy Salem
Constance Sarvay and Sally Culpepper
Sue Schroer
LuAnn Shuster and Joe Tucker
Arthur E. Spector
Sally Staley
Stephen Mitchell Brown Photography
James E. Stumpf and Barbara
Hoekstra
Arthur L. Thomas
Denise and Charlie Toil
Kenneth S. Trump and Family
University Tees
Robert C. and Emily C. Williams
Thomas Wrabel
Bill and Ann Zabkar

SUPPORTING PLAYERS
(\$100 TO \$249)

Julianne Addie
Janice and John Andes
Anonymous (7)
Barbara and Michael Archer
M. Karen Aylward
Sue Backus
Charles M Bailin MD
Bruce and Judith Banks
Andrew Barkley and Heather Huston
Barkley
Mr. & Mrs. Thomas D. Basco

Christine Baumhauer
Kay Bees
Ethyl L. Bendler
Benton Family
Katherine Bergstrom
Matt and Susan Beverstock
Chester Bigza
Patrice and Edward Blakemore
Alan and Dottie Boesger
Carol and Gene Boivin
Box Office Donations
Tom and Mary Brooks
Carole and Michael Brown
Heather Bubnick
Marian and Bernard Buckner
Ronald Bultema
Timothy and Larissa Bungo
Daniel Bush
James C. Butler
Joanne H. Calkins
Don and Jenean Carlson
Sally Carr
Jay and Jill Carson
Colleen Caso
Brian and Marie Cassidy
Richard Castele and Carolyn Leitch*
Michael and Lois Cellura
David and Linda Cerone
Kim Cerri
Donald and Annamarie Chick
Ron and Barb Chidsey
Brandy Chittester
Ms. Donna Cirilo
Sue and Joe Colucci
R. Edwin Crabtree
Ryan Cross
Patricia Csongei
Marilyn Cvetic
James Darr
David and Stacie Dashiell
Alan and Pamela Davis
Betty and Doug Dechert
Jacqueline Discenza
Heather Doerschuk
Jim and Chris Dolce
Jeffrey Dross & Michele Ladouceur
Mary Lou Durkin
Jessica Eidson
Teresa Eland
James R. Esswein
Murray Evans and Margot LaRosa
Cindy and Bob Fairchild
Karen Fields and David Klausner
Mary Alice and Warren Fish
Richard and Cynthia Fisher
Judy Fitch
Matt and Donna Fitzsimmons
Vicki and Bob Foster
Mr. and Mrs. Earl R. Franklin
Franca Garofalo
Chas and Patti Geiger
Marsha Ginley

Darla Ginter
George Graham
Jeff and Jeanne Haas
Margie and Jeremy Hackett
Ed and Mary Jane Hadaway
Bob and Kay Hamed
Nick Hanna
Ruth Hans
Gloria Hardington
Linda Harper and Jim Martin
Fran and Tom Hayden
Diane and Frank Helbig
Fran Heller
Barbara and John Hemsath
Ruth Herman
Jean Hickey
Michelle C. Hillstrom
Michelle Hills
Tom Hoadley and Cynthia Lombardo
Donna Hoder
William Hoffert
Gail and John Holian
John W. Hollopetre
John Hopkins
Marilyn and Peter Hornig
Maxine W. Houck
Martin and Kathleen Hrabik
Carolyn Hufford and Thomas Yanks
Marcia and Dave Humpal
Michelle Hyland
Dean Ibsen
Andrea Jackman
Carol and William Jacobs
David and Terri Jankowski
Patrick Janson
Mittie Jones
Don & Sharon Jordan
Tony and Aura Jucaitis
Stephen L. Kadish Family
Philanthropic Fund
Heather Kalamarides
Kevin and Colleen Kane
Linda Kane and Gary Stewart
Mary and Chris Kay
Sylvia Kerteszy
Dr. and Mrs. L. Stephen Kish
Kathy & Karl Kniely
Martin Kohn
Ursula Korneitchouk
Jim Kozel
Alice Lang
Tim and Patti Laskey
Will and Laura Lazzaro
Jane Leschnik
Frederic Levine and Janine Martyn
Aarne and Jeanne Lillo
Richard and Laura Little
Andrew Ljubi
Nicholas and Andrea Longauer
Kenn Louis
Colleen Lowmiller
Tom and Nancy Lukens

Toby and Melanie Maloney
Mary and Brian Marita
Charley and Sue Marston
Dave and Bernadette Mast
Laurie and Walt McClellan
Anne J. McEvoy
Mark McKinstry
Mary Ellen McLaughlin and Maureen Battiato
John McNulty
Ryan and Melissa Meany
Melissa and Kevin Meehan
Amanda Miller
Chris and Kaily Miller
Marianne Monahan
Karen Moore
Dr. Paula Mulligan
Thomas Mulready and Carol Hunt
Brian and Jaclyn Musselman
Judith Muzzy
Meg O'Connor
Drina and Gary Nemes
Sherry and Tim Niederkorn
Dale and Barbara Nitzsche
Carol and Donald Norman
Steve Norris
Brenda and Ben Norton
Christine Novak
Cathy and Terry Nowlin
Rose O'Boyle
Linda and Ronald Okicki
Robert and Adelaide Olander
David Oldham
Laura Olson
Gerry O'Malley
Naomi Opdycke
Anne Osborne
David and Mary Osburn
Thomas Pace
Mary Ann Palmer
Jessica Parkison
Jane Passantino
Janice Patterson
Sue Pedro
Allan and Barbara Peskin
Alexandra Pittaway
Platform Beers LLC.
Gloria Plevin
Will and Annie Powell
Bob and Karen Pritchard
James Quilty
Susan Racey
David C. Ragone
Lynne and James Rambasek
Joanne Rassie
Roberta and Calvin Ratcliff
Paula and Rick Reed
Judy and Clifford A. Reeves JR.
Kenneth Reichel
Sarah Sessions Reid
Richard and Lynne Rice
Melissa Richmond

Oscar E. Rodriguez
Daria Roebuck
Ken and Lynn Rogozinski
Laura Vandale and Tedd Roos
Tony Otto and Tom Rounds
Laura and Joseph Rushton
Larry Sakai
Michael Salkind and Carol Gill
Ralph Sanderson
Brian Sapola and Jessica Lovich-
Sapola
Deepika Sastry
Phillip Schmiedl
Christian L. Schrader
Sharon and Steve Schuldt
Nancy Score
Suzanne Scott
Racheal Seibert
Jeff and Sharon Senney
Nancy Seryak
Rebecca Shaw and Dave Turner
Ed and Sue Sherry
George & Elizabeth Shiekh
Cauley Simmons
Dana Snyder and Jim Slivleoff
Michael Lederman and Sharmon
Sollitto
Rochelle Solomon
Kathleen J. St. John
Claire and Eugene Stair
Harry and Kathlyn Stenzel
Denise Stiert
Charity Stock
Bill and Peggy Stockdale
Karin Stone
Elizabeth Stueber
K.K. and Joe Sullivan
Sarah Suma
Robin and Scott Suttell
Charlene and Jim Szaller
Paul and Judy Szentkiralyi
Beth Tallman
Bob Taylor and Jeff Herrmann
The Study Club
Theodore Theofrastous
Lauren & Chad Tisdale
Derek Tokarz
Missy and Darren Toms
Eric Townsend
Joanne Uniatowski
Mike and Mary Vasilakes
George Vovos
Susan G. and Thomas J. Wagner
Jerald Wagner
Nelson Wagner
Eileen Walsh
Mark Walter
Greg Warren and Karen Seawall
Mary Wehrle
Stacey Whiteamire
Dottie and Dan Whittenberger
Suzanne Wiedemer

Martha Wiersma
Marianne Wills
Jane Winters
Cheryl Wulber
Stephen Yusko
Amber Ziemba
Barbara Zivich

** indicates deceased*

WITH SPECIAL THANKS

Cuyahoga County residents through
Cuyahoga Arts and Culture
Ohio Arts Council

HONORARY GIFTS

Beck Center for the Arts would like to
thank those who have given gifts in
honor of the following individuals:

Abdollahian, Kay, Schwede,
Gallagher Clan
Randy and Deena Baenen
Bryan Bird
Eileen, Olivia and Cameron Brady
Helen Corns
Syma Dar
Edward Dee
Cindy Einhouse
Betsy Lee Feierabend
Jack Lazzaro
Anne McEvoy
Audrey McNulty
Mickey Mencin
Mike O'Brien
Garretson Oester
M. Patricia Oliver
The Powell Family
Bella Ramirez
John Reynolds
Ally Rovito
Lynda Sackett
Benjamin L Sakai
Alexander Seibert
Wally and Joyce Senney
Bill Spence
Scott Spence
Art Stehlik
Melanie Szucs
Rennie Tisdale
The Watts Family
Matt & Sarah Winters
Jack & Eva Wynn
Anna Yuhas

MEMORIAL GIFTS

Beck Center for the Arts would like
to thank those who have given
gifts in memory of the following
individuals:

Sharyn Bailin
Alekie Delis Bennhoff

Judith Buerkel
Lew Bush
Walt Campbell, Mary Campbell Nir, &
Margaret Campbell
Tim Carpenter
Marilyn Helen Clough
Phyllis Curry
Lee Ann Curry
Anis Dar
Nick Amster Fishelson
Robert and JoAnne Hahn
Thomas Oak Hardington
William J. Harper
Maurice L. Heller
Mark & Lowell Holloway
Barbara Hunter
John V. Jackson II
Eleanor F. Kushnick
Clara Lacey
Leo Lightner
Mary Litten
Barbara Nussbaum King
Ethelyn Richmond
Dorothy Silver
Barbara Swearingen
Lindsay Taylor
Dave Tolhurst
Vilma Vargo

Beck Center's Youth Theater
program is supported by The Mary
Ward Scholarship Fund.

The Beck Center Dance Program
is supported by the Lynda
Sackett Endowment for Dance
Education and the James Kurtz
Memorial Endowment Fund.

The Community West
Foundation is a proud supporter
of Creative Arts Therapies at
Beck Center for the Arts.



Inline

TECHNOLOGY SERVICES

CommuniKate™ Phones/VoIP

A phone system for your Non-Profit or Small Business with all the bells and whistles you need at a price you can afford.

As low as \$2.95 per line plus minutes!

Email carlton@inlinetechnology.com for more information.

Custom Software | Managed IT Services | Unified Communication
216-221-4600 | www.inlinetechnology.com



**Championing arts and culture in the
Buckeye State through advocacy,
education, and engagement.**

#OhioArtsStrong
www.ohiocitizensforthearts.org



**Cleveland
vegan**

organic scratch kitchen

17112 Detroit Ave/Lakewood

216-221-0201

Catering, Cafe, Bakery
clevelandvegan.com

Creating Our Future Campaign Contributors

During this season of giving, we hope you will remember Beck Center in your year-end plans. As we look to finish Creating Our Future, please know that we also accept gifts of stock and securities. Please visit beckcenter.org/give for more information and make a lasting impact for families in our community.

We gratefully acknowledge the support of the following individuals, corporations, foundations, and organizations that have contributed \$1,000 or more to Creating Our Future: The Campaign for Beck Center. For information on naming opportunities and touring our renovations, please contact our Director of Development, Megan DeFranco, at mdefranco@beckcenter.org

\$1,000,000+	Pam and Tom Smith Michael and Wendy Summers Women's Board of Beck Center	Elaine Cook Dependable Painting Company Eaton Charitable Fund Cindy and Tom Einhouse David Greenspan and Mary Kim Elkins Thomas and Mary Ellen Fraser Cindy and Tim Friedmann Charles and Nancy Gustafson Doug Hoffman and Ron Stach Elda C. Krach Lakewood and Rocky River Rotary Foundation Sean Malloy Mickey and Larry Mencin Pat and Jim Oliver Anne and Jack Palomaki Anthony and Mary Rego Laura and David Sangree Carolyn P. Seelbach* Gina Vernaci and Bill Hilyard Thomas Wagner and Malinda Smyth Mary C. Warren Laird and Jennifer Wynn
\$500,000 - \$999,999	\$25,000 - \$49,999	
Chann Fowler-Spellman and Ed Spellman	Anonymous Dorn Family Foundation Joel and Bonnie Egertson Charlotte and Charles Fowler Richard and Judy Fox The William O & Gertrude Lewis Frohring Foundation William Garrison and Mary Jo Mlakar The Giant Eagle Foundation Charles and Marie Grossman Terry and Dona Jones Gerrit and Peg Kuechle Dennis and Kim Lansdowne The Nord Family Foundation Tim Penton and Jay Gardner Brad and Margaret Richmond Lynda Sackett and Bill Knoble* The Kent H. Smith Charitable Trust Margaret Weitzel	
\$100,000 - \$499,999		\$5,000 - \$9,999
The Char and Chuck Fowler Family Foundation Kathy and Ken Haber Bonnie J. Hagerman Bill and Joyce Litzler Oatey Foundation John A. Reynolds Sandy Sauder William and Susan Schmitt State of Ohio Ellen Todia and David Matthiesen		
\$50,000 - \$99,999		
Dale and Cindy Brogan The Callahan Foundation The George W. Codrington Charitable Foundation Doug Cooper David Deming Mary and Tom Holland Michael and Carol O'Brien Lee and Maria Parks	\$10,000 - \$24,999	Dena and Daniel Adler American Endowment Foundation Mark and Cynthia Bacon Ruth B. Bertrand The Bonne Bell Family
	Anonymous (3) Curt Brosky and Betty Tereck Commercial Interior Resources, Inc.	

Foundation
Monica Brown
Georgia A. Burley
Nancy and Jack Calcott
Mary Anne and Byron
Crampton
Syma Dar
Michael and Amy Daso
The Dominion Energy
Charitable Foundation
David and Virginia Estrop
Larry and Rosemary Faulhaber
Dorothy Ginley-Bahm
Kim and Nora Katzenberger
Andrew L. Killian
John and Judy Kropf
Carol Latham
Terrence and Karen McHugh
Ryan and Alysia McKean
Patricia and George Miller
Rebecca Niemiec
Monica and Keith Owen
Barbara and Bob Paynter
Jeff and Nora Poore
Donna Rae and Edward Smith
The Kelvin and Eleanor Smith
Foundation
Art and Sherri Stehlik
Theater Alliance of Beck Center
Richard and Gail Tanner
Landon Tracey and Corey
Donovan Tracey
Turner Construction Company

\$1,000 - \$4,999

Rachel Abernethy
Adobe Systems Incorporated
Joel and Teresa Andreani
Anonymous
Brenda and George Anthony
State Senator Nickie Antonio
and Jean Kosmac
AXA Advisors LLC
Sam and Chrysa Babic
Carol Barnak
Kathleen A. Baskoff and Steven
Schwarz

Kathryn Berkshire
Liz and David Breudigam
Robert and Mary Calsin
Colleen Clark-Sutton and Tom
Sutton
Community West Foundation
Connie and Hal Cooper
Rosemary Corcoran
Tim and Tracy Coughlin
Joanna D'Agostino
Mary Beth and Jeff DeClerck
Tom and Tricia Dent
Sherrie Desmond
Gregory Good and Adrienne
Embery-Good
Victor and Janet Erml
Jon and Mary Fancher
Jenny and Ralph Febbo
FGI Foundation
The Gagen Family
Henry Hilow and Judy Ghazoul-
Hilow
Kathy Goepfert
William Gorton and Susie
Blackburn
Gerald and Pennie Gray
Barbara Hueter and Andrew
Zajac
Hyland
Impel Creative, Inc.
John and Mary Kay Jefferson
Emily Jett and Mark Getsay
Robert and Betty Karras
Mary and Chris Kay
KeyBank Foundation
Cathy and Peter Kuhn
Lakewood Catholic Academy
William LaPlace
Cindy and Jake Marx
Freida McGee and Michael
Wochna
Kathleen McGorray and Bob
Soffer
Dave and Val Mechenbier
Marcello and Shelley Mellino
Carol and Dale Miller
Colin and Sarah Moeller
Lauren Mueller

John P. Murphy Foundation
Dr. and Mrs. Peter Nintcheff
John O'Brien
Naomi Opdycke
PNC Foundation Matching Gift
Program
Donna and George Puskas
John J. Ritchey
Jeffrey and Susan Ritter
Brian Sapola and Jessica
Lovich-Sapola
Sharon and Steve Schuldt
Nancy Score
Sherwin-Williams Company
Victoria and Daniel Smigelski
Jan Soeder
Bill Spence
Ann Spence
The Staub Family
Arthur L. Thomas
Dr. Timothy Kantz and Megan
Torok
Terry and Candace Vincent
Kathy and Gregg Wasilko
Karen and Jeffrey Weber
Dick West
Karen Youngstrom

**indicates deceased*

It's time for a new identity.

**One that tells the story of creativity
in Ohio and illustrates it.**

Ohio Arts
COUNCIL



Expression is an essential need.

**By better illustrating our story,
we can better help you express yours.**

Complete the story at oac.ohio.gov/identity.

30 EAST BROAD STREET, 33RD FLOOR, COLUMBUS, OHIO 43215-3414 | 614-466-2613

OAC.OHIO.GOV | @OHIOARTSCOUNCIL | #ARTSOHIO