



Creating Art Experiences

music and lyrics by

**STEVEN
CHESLIK-DeMEYER**

**TIM
MANER**

**ALAN STEVENS
HEWITT**

directed by
**VICTORIA
BUSSERT**

musical direction by
**MATTHEW
WEBB**

choreography by
**GREGORY
DANIELS**



LIZZIE
THE MUSICAL

A Beck Center/Baldwin Wallace
Music Theatre Program collaboration



FEBRUARY 4 - 27
SENNEY THEATER

17801 DETROIT AVENUE, LAKEWOOD, OH 44107
THEATER | EDUCATION | EXHIBITIONS | OUTREACH
beckcenter.org | 216.521.2540 x10





BOARD OF DIRECTORS – 2021 - 2022

M. Patricia Oliver

Chair

Douglas Hoffman

Immediate Past Chair

Lucinda B. Einhouse

President and CEO

Cynthia Brogan

Treasurer

Ellen Z. Todia

Secretary

Michael Brown
Jane Christyson
Rosemary Corcoran
Syma Dar
Michael Daso
Chann Fowler--Spellman
Richard Fox
Frances Goins
Emily Jett
Angie Kazi
Sean Malloy
Kathleen McGorray
Ryan McKean

Mickey Mencin
Michael J. O'Brien
Barbara Paynter
Amy Petrus
Jeff Poore
John A. Reynolds
Bradford Richmond, M.D.
Sandra Sauder
Brian Sinchak
William Spence
Corey Donovan Tracey
Thomas C. Wagner
Margaret G. Weitzel

HONORARY DIRECTORS

Donald G. Bain, Jr.
Deborah A. Bridwell, Ph.D.
Ruth B. Bertrand
Nancy B. Calcott
David C. Estrop, Ph.D.
Terry L. Jones

Andrew Killian
W. James Mayer, Jr.
Patricia McNamara
William J. Schmitt
Marjorie Redmond
Ronald Waldheger

Honorary – Ex–Officio

Marianne Monahan
President Beck Women's Board

NATIONAL DIRECTORS

Alice Ripley Martin Savidge

MANAGEMENT TEAM

Lucinda B. Einhouse.....President and Chief Executive Officer
Scott Spence..... Artistic Director
Megan DeFranco..... Director of Development
Edward P. Gallagher, MT–BC..... Director of Education
Julie Gilliland..... Director of Marketing
Larry J. Goodpaster..... Director of Finance & Operations

ADMINISTRATIVE AND PRODUCTION STAFF

Tracy Ammon, MT–BC..... Associate Director of Creative Arts Therapies
Charles Battaglia..... Development & Volunteer Coordinator
Tim Chrisman..... Associate Technical Director
Sarah Clare..... Associate Director, Theater Education
Mark DeVol..... Technical Director
Danielle Doré..... Pottery Studio Manager
Jennifer Feierabend..... Annual Fund Manager
Melinda Glass, MT-BC..... Music Therapist
Ann Huebner..... Registration Support Manager
Jay'da Hall..... Development Assistant
Tim Keehn..... Facilities Manager
Ryan Lucas..... Visual Communications Designer
Jessica F. McGrath..... Assistant Director of Education
Linda Merchant Pearce..... Gallery Coordinator
Michael Simile, MT-BC..... Music Therapist
Melanie Szucs..... Associate Director, Dance Education
Jake Tisdale..... Accounting Assistant
Rennie Tisdale..... Customer Service Manager
Erica Tkachyk..... Senior Finance Manager
Alexandra Rovito, Justine Horning, Paige Smith..... Customer Service Associates
Andrew Flinn, Jacob Matthews, Alastair Stockdale..... Facilities

Act one begins



Beck Center for the Arts

... WITH INVESTMENT BY CUYAHOGA ARTS & CULTURE

Cuyahoga Arts & Culture (CAC) uses public dollars approved by you to bring arts and culture to every corner of our County. From grade schools to senior centers to large public events and investments to small neighborhood art projects and educational outreach, we are leveraging your investment for everyone to experience.



Your Investment:
Strengthening Community

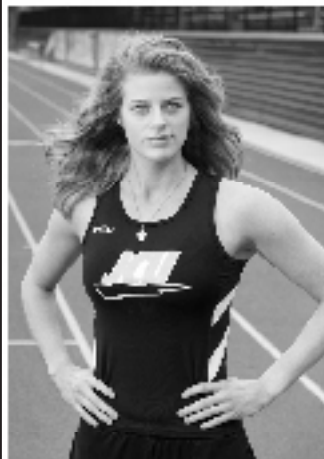
Visit cacgrants.org/impact to learn more.



BERKSHIRE HATHAWAY

HomeServices
Lucien Realty

- Check your home's performance at:
www.HomeValuesInLakewood.Info
- CHRIS BERGIN
216.244.7175
Chris@ChrisBergin.com



Wetzler's
PHOTOGRAPHY

Advertising • Commercial • Editorial
216-771-1554 wetzlers.com



Waldheger Coyne

a legal professional association

“....All the best performers bring to their role something more, something different than what the author put on paper. That’s what makes theatre live. That’s why it persists.”

Stephen Sondheim

Gemini Tower I, Suite 550
1991 Crocker Road
Cleveland, Ohio 44145
440-835-0600

Assistive Listening Devices @ BECK CENTER

Assistive Listening Devices (ALDs) amplify and clarify sound by cutting down or eliminating ambient noise. Assistive Listening Systems are installed in both the Senney Theater and the Studio Theater and were completely overhauled during the summer of 2021 to improve sound quality and performance. Headsets may be used at any seat and, with the upgrade, induction neck loops are also now available for patrons who use hearing aids and cochlear implants with a “T” switch. **Ask your audiologist whether your hearing aid or cochlear implant has a “T” switch (telecoil) and how to use it with an assistive listening headset.**

Who can use an Assistive Listening Device?

Everyone! While induction neck-loops are only compatible with hearing aids and cochlear implants that include a “T” switch, the ear speaker can be used by anyone who wants a little volume boost.

Will the patrons next to me be disturbed by the Assistive Listening Device?

ALDs are designed to deliver sound directly to an individual and work using specific reserved radio frequencies so as to not conflict with any other devices or equipment in use by the theatre or our patrons. In addition, the ear speakers and the neck loops are designed to be as inconspicuous as possible. It's likely no one will even know you're using one.

Are Assistive Listening Devices available for every show and event at Beck Center?

YES! As long as the event is held inside the Senney or Studio Theater.

Do I need to request an Assistive Listening Device in advance?

You do not need to request an ALD in advance of arriving at the theatre and an ALD can be requested at any time during an event. ALDs are distributed on a first-come-first-served basis free of charge. You may request your ALD at the Customer Service desk in the Beck Center lobby.

Is there a cost for using an Assistive Listening Device?

No, ALDs are distributed free of charge on a first-come-first-served basis.

Do I need to sit in a specific place to use an Assistive Listening Device?

No, all of our ALDs will work from any seat in any of our three theatres.

Do you clean your Assistive Listening Devices?

Yes, we follow the manufactures maintenance recommendations and use antimicrobial wipes to clean all earpieces and neckloops when they are returned before placing them back into storage.

Do I need to arrive early to obtain an Assistive Listening Device?

While obtaining an ALD will not take very long, we strongly recommend that all patrons arrive AT LEAST 20 minutes before the performance to allow time to park, get to the theatre, and find your seat.

I have a hearing aid or cochlear implant, will an Assistive Listening Device work for me?

Induction neckloops are also now available for patrons who use hearing aids and cochlear implants with a “T” switch. Ask your audiologist whether your hearing aid or cochlear implant has a “T” switch (telecoil) and how to use it with an assistive listening headset. Patrons find this to be the best way to use the ALD's.

I have severe hearing loss, will an Assistive Listening Device work for me?

ALDs will generally help anyone who can understand normal conversation either without aid or with a hearing aid. For more severe hearing loss, an ALD alone may not be enough.

**Questions? Just call Customer Service at
216.521.2540 x10 or email boxoffice@beckcenter.org**

House Information

USE OF CAMERAS OR RECORDING DEVICES DURING THE PERFORMANCE IS PROHIBITED.

COVID SAFETY – All patrons are required to wear a proper face covering at all times. All patrons must provide proof of vaccination or negative COVID test and ID before entering the theater.

ACCESSIBILITY – Wheelchair ramps, an elevator, and accessible restrooms make all areas of Beck Center accommodating to all patrons. Theatergoers in wheelchairs should request seats in Row J.

BOX OFFICE HOURS – 12pm - 8pm Monday through Thursday; 12pm - 5pm Friday; 9am - 5pm Saturday; 12 pm - 4pm on Sundays during performance times; and open through intermission on performance dates. For ticket information visit beckcenter.org or call 216.521.2540 x10.

CELL PHONES – Please turn off all cell phones and audible devices as the sound and screen light are distracting to the audience and especially the cast. Texting is not permitted during performances. Copyrights strictly prohibit the photographing, audio or video recording of all productions. Cameras and cell phones may be confiscated.

LARGE PRINT PLAYBILLS – Are available upon request at our Customer Service desk.

FIRE – Exits indicated by red lights are the shortest route to safety. In case of an emergency, please walk to the nearest exit.

LOST & FOUND – Customer Service maintains a Lost & Found service as a courtesy to our patrons. Please report any misplaced items, lost or found, immediately.

PARKING – Convenient, free, on-site parking.

RECYCLING – Beck Center believes in recycling. If you decide to discard your playbill, bottles or cans, please do so in the designated recycling receptacles.

RESTROOMS – Restrooms are located on the ground floor near the garden court at the west end of the Galleria and on the second floor just outside the elevator.

SMOKING – Beck Center is a non-smoking facility. Smoking is permitted outdoors.

About Beck Center

Beck Center for the Arts is proud to be a part of Northeast Ohio's professional theater landscape. Like our colleagues Playhouse Square, Cleveland Play House, Dobama Theatre, and Great Lakes Theater, Beck Center has a letter of agreement with Actors' Equity Association. We hire professional actors from the Northeast Ohio region, including members of Actors' Equity. Specifically, we are a Small Professional Theater (SPT) based on the number of seats, number of our performances, and the maximum weekly hours of work we provide to actors. We are also a producing theater. We produce every show on our stages. Meaning we choose the play, cast and rehearse it, build the sets, props, and costumes, direct and perform the music, and design lights and sound, utilizing regional resources and talent, all for you, our valued patron of the arts. Thank you for supporting live theater!

**DOBAMA
THEATRE**

A
BITINGLY FUNNY
ANGRY LOVE POEM FOR
BLACK LIVES

KILL MOVE
PARADISE

WRITTEN BY JAMES IJAMES

MARCH 4 - 27

216.932.3396 • DOBAMA.ORG



Beck Center for the Arts
17801 Detroit Avenue, Lakewood, OH 44107
Lucinda B. Einhouse, President & CEO Scott Spence, Artistic Director
*In collaboration with **BALDWIN WALLACE MUSIC THEATRE PROGRAM***

LIZZIE THE MUSICAL

music & lyrics by
**STEVEN CHESLIK-
DeMEYER**

**TIM
MANER**

**ALAN STEVENS
HEWITT**

directed by
**VICTORIA
BUSSERT**

musical direction by
**MATTHEW
WEBB**

choreography by
**GREGORY
DANIELS**

production stage manager
**IMANI
ROBINSON**

set design by
**JEFF
HERRMANN**

costume design by
**CHARLOTTE M.
YETMAN**

lighting design by
**JEFF
HERRMANN**

sound design by
**CARLTON
GUC**

LIZZIE has been developed with the assistance of tiny mythic theatre company, HERE arts center, Took An Axe Productions (Hillary Richard & Peter McCabe), Brisa Trincherro/Corey Brunish (Make Musicals) and Van Dean/Kenny Howard (Broadway Consortium)

Sponsored by



Video or audio recording of this production is strictly prohibited.

**Members of Actors' Equity Association, the Union of Actors and Stage Managers*

Audience Note

Runtime: 1 hour & 45 minutes - one 15 minute intermission

Cast of Characters

“BLOOD” CAST

performs: 2/3, 2/5, 2/11, 2/13, 2/17, 2/19, 2/25, 2/27

Alexa Lopez.....	Lizzie
Kris Lyons.....	Emma
Gracee Street.....	Bridget
Audrey Hare.....	Alice

“AXE” CAST

performs: 2/4, 2/6, 2/10, 2/12, 2/18, 2/20, 2/24, 2/26

Jessi Kirtley.....	Lizzie
Autumn Key.....	Emma
Colette Caspari.....	Bridget
Andie Peterson.....	Alice

Savannah Cooper.....	Bridget Understudy, Dance Captain
Zoë Lewis.....	Lizzie Understudy
Maggie Solimine.....	Lizzie Understudy
Mia Soriano.....	Emma Understudy
Hanako Walrath.....	Alice Understudy

Production Staff

Artistic Director.....	Scott Spence
Director.....	Victoria Bussert
Musical Director.....	Matthew Webb
Associate Music Director.....	Harrison Rothblott
Assistant Music Director.....	Gideon Temple
Choreographer.....	Gregory Daniels
Assistant Director.....	Danny Bó
Production Stage Manager.....	Imani Robinson
Assistant Stage Manager.....	Michaela Henry
Assistant Stage Manager.....	Charis Ellett
Technical Director.....	Mark DeVol
Associate Technical Director.....	Tim Chrisman
Scenic Designer.....	Jeff Herrmann
Scene Design Assistant.....	Abigail Manard
Costume Designer.....	Charlotte M. Yetman
Lighting Designer.....	Jeff Herrmann
Sound Designer.....	Carlton Guc
Sound Board Operator.....	Angie Hayes
Click Programmer.....	Chase Kessler
Carpenters.....	Simon Sedmak, Tim Chrisman
Follow Spot Operators.....	Hayley Baran, Libby White, Mary Kahelin

Run Crew.....Elisa Byrd, Rodrigo Torrejón, Evan Lilienthal, Trevor Gill-Snow
 Baldwin Wallace Costume Shop ManagerMelanie Boeman
 Wardrobe Supervisor Betty Pitcher
 Wardrobe AssistantLee Price, Katelyn Baughman
 Hair Design.....Aislyn Clark
 Cutter/Draper/Costume Construction..... Diana Sidley, Charlotte M. Yetman
 Props Artisans..... Grace Newell, Julia Smith

Orchestra

Keyboard/Conductor Matthew Webb
 Guitar 1..... Michael Simile
 Guitar 2/Keyboard..... Jesse Hodgson
 Bass..... Jason Stebelton
 Cello/Percussion..... Bryce Kessler
 Drums & Percussion.....Alex Drews

Special Thanks

Gracie Albus, Ashley Platt, Kenzie Hall, Baldwin Wallace University Theatre and Dance Department
 Costume Shop



This retrospective will launch the Paul and Norma Tikkanen Painting Prize, coming in October 2022. This contemporary painting competition will be open to NE Ohio & NW Penn, with over \$30,000 in artist awards.



2928 W. 13th Street
 Ashtabula, OH 44004
ashtabulaartscenter.org
facebook.com/ashartscenter
 (440) 964-3396

Help us raise the remaining funds needed to:

- build a new ADA accessible entryway
- add more restrooms
- modernize the lobby
- increase the customer service area capacity
- RAISE THE ROOF to create the Center for Dance Education
- make your gift online, beckcenter.org/give



Creating
OUR
Future

THE CAMPAIGN FOR BECK CENTER

Donate to
Beck Center's
Creating Our
Future
Campaign!



Who's Who in the Company



SCOTT SPENCE

(Artistic Director) is enjoying his 31st season at Beck Center! Since 1990, he has produced over 200 shows, directing over 100 himself. The list of favorites grows every season, and

includes *PARADE*, *A MAN OF NO IMPORTANCE*, *SWEENEY TODD*, *HAIR*, *PICASSO AT THE LAPIN AGILE*, *THE FARNSWORTH INVENTION*, *REEFER MADNESS*, *THE FIX*, *ZOMBIE PROM*, *BLOODY BLOODY ANDREW JACKSON*, *EVIL DEAD THE MUSICAL*, *THE 25TH ANNUAL PUTNAM COUNTY SPELLING BEE*, and the box office smash hits *THE PRODUCERS* and *ALTAR BOYZ*. Recently, Scott added to those favorites with productions of *CITY OF ANGELS* and *MATILDA*. He is very proud of the awards and acclamations Beck Center for the Arts has received over the past decade, and is especially grateful for having won the Northern Ohio Live Award for Achievement in Theatre in 2006. Outside of these walls, Scott's directorial assignments have included a remounting of Beck Center for the Arts' hit production of *ALTAR BOYZ* at Playhouse Square's beautiful Hanna Theatre, *DAS BARBECÜ* at Opera Cleveland, *THE LAST NIGHT OF BALLYHOO* at Case Western Reserve University's Eldred Theatre, *OH DAD POOR DAD...* at Cleveland State University Summer Stages, and *NOISES OFF* at both Weatherlane Playhouse in Akron and Berea Summer Theatre. An adjunct faculty member at Cleveland State University, Scott has also had the privilege to direct Sartre's *NO EXIT* and Strindberg's *MISS JULIE*.

Scott holds an MFA in Directing from Western Illinois University and is a trained stage fight choreographer, having studied extensively with the SAFD. As always, he dedicates all the work he does to his two extraordinarily talented leading ladies, Rachel and Carleigh. You both amaze me every day.



VICTORIA BUSSERT

(Director) is thrilled to direct the ninth collaboration between Beck Center and Baldwin Wallace University Musical Theatre program. Her previous Beck Center directing credits include

ONCE, *HAIR*, *IN THE HEIGHTS*, *DOGFIGHT*,

CARRIE the Musical, *NEXT TO NORMAL*, *SPRING AWAKENING* (Cleveland Critics Circle Award for Best Director 2012), *PASSION*, *GREY GARDENS*, and *THE BREAKUP NOTEBOOK*. Her work has been seen at many theaters around the country including Manhattan Theatre Club, Goodspeed Opera, Repertory Theatre of St. Louis, Portland Stage, Dallas Theatre Center, Cincinnati Playhouse, and the Idaho Shakespeare Festival. Locally she has directed for Cleveland Play House, Dobama Theater, Cleveland Opera, Cain Park (22 seasons) and The Cleveland Orchestra at Blossom. Favorite recent projects include the European and Chicago premieres of *LIZZIE*, *Mamma Mia* for Idaho Shakespeare Festival/Great Lakes Theatre, South Pacific with The Cleveland Orchestra at Blossom and the Danish premieres of *Avenue Q* and [title of show]. Victoria is the resident director for Great Lakes Theater and Director of Music Theatre at Baldwin Wallace University where she teaches alongside colleagues Matt Webb and Greg Daniels. Many thanks to Scott Spence, this bloody fantastic company along with Dale, dog Ondie and new puppy, Lizzie (yes, named after HER).



MATTHEW WEBB (Musical Director)

is Music Director of Music Theatre at Baldwin Wallace University: *INTO THE WOODS*, *SPRING AWAKENING*, *KINKY BOOTS*, *BE MORE CHILL*. His previous Beck Center credits include *5x15*,

SCOTTSBORO BOYS, *ONCE*, *HAIR*, *BREAKUP NOTEBOOK*, and *PASSION*. This is his 4th time music directing *LIZZIE* and he can be heard on the original studio cast recording. He is also resident music director at Great Lakes Theater, Idaho Shakespeare Festival, and Lake Tahoe Shakespeare Festival: *MUSIC MAN*, *MAMMA MIA*, *FOREVER PLAID*, *THE FANTASTICKS*, *SWEENEY TODD*, *SONDHEIM ON SONDHEIM*, *GUYS & DOLLS*, *CABARET*, *BAT BOY*, *THE MYSTERY OF EDWIN DROOD*, *INTO THE WOODS*, *A CHRISTMAS CAROL*, *A FUNNY THING HAPPENED ON THE WAY TO THE FORUM*. As sound designer and composer for *GLT/ISF/LTFS: THE TEMPEST*, *MUCH ADO ABOUT NOTHING*, *JULIUS CAESAR*, *TAMING OF THE SHREW*, *MACBETH*, *HAMLET*. Many thanks to Scott, Vicky, and his parents, Jerry & Carol.



GREGORY DANIELS (Choreographer) has been the head of the Dance Program at Baldwin Wallace University since 2010. At BW he has choreographed RENT, FOLLIES, A CHORUS LINE, WEST SIDE STORY,

ANYTHING GOES and the collegiate premiere of KINKY BOOTS to name a few. Regional choreographic credits include LES MISÉRABLES, FOIREVER PLAID, CABARET, MY FAIR LADY, THE SECRET GARDEN and BEEHIVE (all at Great Lakes Theater, ISF and Lake Tahoe Shakespeare), ANYTHING GOES (TUTS starring Tony Nominee Dee Hoty), PUTTING IT TOGETHER (Syracuse Stage starring Tony Award winners Lillias White and Chuck Cooper), MY OWN SONG (Flatrock Playhouse starring Clint Holmes), the regional premieres of SONDHEIM ON SONDHEIM (Playhouse Square), IN THE HEIGHTS, DOGFIGHT, SPRINK AWAKENING (2012 Cleveland Critics Circle award for Best Choreography) and CARRIE (2014 Cleveland Critics Circle award for Best Choreography all at the Beck Center). He has had the rare honor of creating and choreographing a brand-new number for The Rockettes for The Commerce Bank Wow Awards. Proud SDC member. For more info, please visit www.gregorydaniels.net

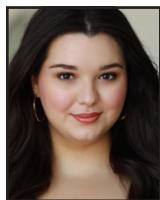


IMANI ROBINSON (Production Stage Manager)

recent credits include INTO THE WOODS (Baldwin Wallace University), JERSEY BOYS STREAMING (Playhouse Square),

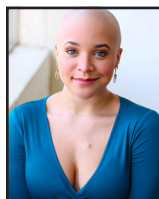
GREENWOOD: AN AMERICAN DREAM DESTROYED (Karamu House), IF/THEN (Lakeland Civic Theatre), and THE MUSIC MAN (Great Lakes Theatre). She would like to thank her mentors for the amazing opportunities and guidance. She would also love to thank her family and friends for the endless support!

CAST



COLETTE CASPARI (Bridget) is ecstatic to be starting her final semester with BWMT off with a bang...literally! Previous roles include PERPETUAL

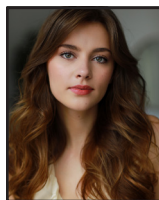
SUNSHINE AND THE GHOST GIRLS (Grace), THE TEMPEST (u/s Stephano), THE LITTLE MERMAID (Ursula), and CHAPLIN THE MUSICAL (Hannah). She has oodles of appreciation for Vicky, Matt, Greg, Danny, Dr.U, The Barbz, and the whole Lizzie team for their endless support and guidance, not to mention her family, without whom none of this would be possible. Insta: @cocaspari



SAVANNAH COOPER (Bridget US/Dance Captain)

is a third year Music Theatre major and Dance minor at Baldwin Wallace University.

Savannah was recently seen in Beck Center's THE SCOTTSBORO BOYS (Willie/Swing/Dance Captain), and BWMT's productions of INTO THE WOODS (Florida) and KINKY BOOTS (Factory Worker). Savannah wrapped filming for an upcoming Netflix feature film as a featured dancer, and will be choreographing the Playhouse Square / BWMT production of THE LIGHTNING THIEF. Savannah would like to thank BWMT, Vicky, Greg, Sandy, Matt, her family, & friends for their love and support. #SavSTRONG @savvy_sc



AUDREY HARE (Alice)

is a senior music theatre major at Baldwin Wallace. Previous credits include Baker's Wife in INTO THE WOODS, Wendla in SPRING AWAKENING, Manager

Man in PERPETUAL SUNSHINE...GIRLS, Milan Stage Manager in KINKY BOOTS, and Texas/Sally u/s in CABARET. After helping behind-the-scenes on Victoria Bussert's production of LIZZIE in Chicago when she was in high school, she is overjoyed to have come full circle with this fearless cast of women. She'd like to thank Vicky, Sandy, Greg, Matt, and her family and friends for their continued love and support. @audrey_hare

ROCKY RIVER

CHAMBER OF COMMERCE

Stronger. Together.

The Rocky River Chamber of Commerce
remains resilient and connected, truly a
community of opportunity.



Learn more about all
the Chamber offers the
business community in
Northeastern Ohio,
connect by:

Phone :: 440.331.4410

Email :: info@rockyriverchamber.com

Visit RockyRiverChamber.com
to apply for membership today!



You Belong

AT

BEAUMONT

Now Accepting Applications

[BEAUMONTSCHOOL.ORG/APPLY](https://beaumontschool.org/apply)

WHERE YOUNG WOMEN LEARN TO CHANGE THE WORLD

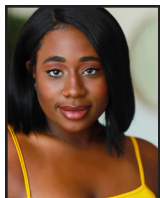
B Beaumont
School



International Baccalaureate
World School

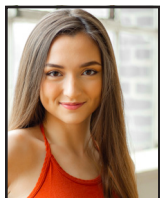
A Catholic school in the Ursuline tradition educating women for life, leadership and service.

[BEAUMONTSCHOOL.ORG](https://beaumontschool.org)



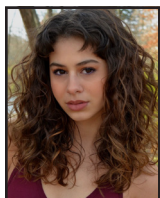
AUTUMN KEY (Emma) is a Senior Music Theatre major at Baldwin Wallace University. She is from Cleveland, Ohio, and is officially making her Beck Center debut! Previous credits include the Witch

(INTO THE WOODS) at Baldwin Wallace University, as well as Fastrada (PIPPIN), King Herod (JESUS CHRIST SUPERSTAR), and Nell (AIN'T MISBEHAVIN') at Timber Lake Playhouse. You might have also seen Autumn in the virtual production of SPRING AWAKENING at Baldwin Wallace University as Martha Bessell. Autumn is beyond grateful to work with this INCREDIBLE cast and crew and would like to give a special thank you to Vicky, Matt, and Greg! @_autumnkey



JESSI KIRTLEY (Lizzie) is a sophomore Music Theatre major from Atlanta, Georgia. She was previously seen in the Beck Center's 5 X 15: FIVE WORLD PREMIERE FIFTEEN-MINUTE MUSICALS

as a Ghost Girl in PERPETUAL SUNSHINE AND THE GHOST GIRLS. Most recently, she was seen in Baldwin Wallace University's INTO THE WOODS as Rapunzel. She would like to extend a special thank you to Sandy Simon for her constant support, as well Victoria Bussert, Matt Webb, Greg Daniels, and Danny Bó for their combined brilliance in bringing LIZZIE to life.



ALEXA LOPEZ (Lizzie) is a sophomore Music Theatre major at Baldwin Wallace University and hails from Miami, Florida. Regional credits include WEST SIDE STORY (Maria), PERPETUAL

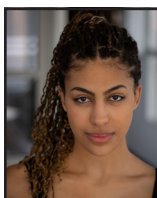
SUNSHINE AND THE GHOST GIRLS; 2021 ASCAP Award Winner (Mollie), B.A.R.S. HIP HOP/MUSIC THEATRE IMPROV (Rolex). Other favorite credits include INTO THE WOODS (Rapunzel), SONGS FOR A NEW WORLD (Woman 1), CHICAGO (Roxie Hart), ON THE TOWN (Claire). Alexa thanks her family, friends, and wonderful mentors from the bottom of her heart for not only believing in her,

but for their immeasurable love and endless support throughout her artistic journey thus far. Enjoy the show! IG: @alexaelopez



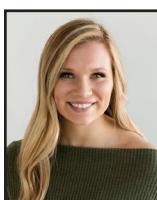
KRIS LYONS (Emma) hails from Cleveland Heights, Ohio, and is currently a sophomore in Baldwin Wallace's Music Theatre program. She was most recently on stage at Clinton

Area Showboat as Sylvia (All Shook Up) and BJ (Smokey Joe's Cafe). Kris would like to thank the faculty, her family, and her furry little creatures for their continued support. IG: @justkrislyons



ZOË LEWIS (Lizzie US) (she/they) is a freshman at Baldwin Wallace University, and is originally from Albany, NY. Outside of creating theatre, Zoë runs

Royally Radiant Princess Parties and Events in Berea, where she wields a party bag instead of an axe! Her favorite credits include HEATHERS (Heather Duke, u/s Veronica), PUFFS (Cedric/Mr. Voldy), and SPRING AWAKENING (Ilse). You can see Zoë as Abigail Williams in BW's Mainstage production of THE CRUCIBLE in April '22. Thanks to BWMT, Mom, Vanessa, and Black and Brown creatives in the 518 and beyond! #representationmatters IG: mrmoonie



ANDIE PETERSON (Alice) is a current junior music theatre major at Baldwin Wallace University. She was recently seen as the Stepmother in BW's fall production of INTO THE

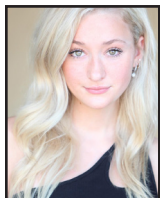
WOODS. Other credits include Emmaline in the world premiere of PERPETUAL SUNSHINE AND THE GHOST GIRLS as part of BW's virtual new works series (2021). She would like to thank her parents, Dana and Paula, sister Hallie and the best pups in the world, Maybel and Lucie for their unending love and support! Many thanks to Vicky, Matt, Greg and Sandy for abundant guidance and opportunity. Let's rock and have a bloody

good time!!

MAGGIE SOLIMINE (Lizzie Understudy) is a sophomore music theatre major at Baldwin Wallace University. She was most recently in INTO THE WOODS at Baldwin Wallace. In March Maggie will be playing Grace Fryer in RADIUM GIRLS at Baldwin Wallace. Some of her other recent roles include Queenie in THE WILD PARTY, Elle Woods in LEGALLY BLONDE and Annie Sullivan in THE MIRACLE WORKER.



MIA SORIANO (Emma US) is a junior music theatre major at Baldwin Wallace University. They have recently been in INTO THE WOODS (Baker's Wife u/s), SPRING AWAKENING (Ens./Martha u/s), and KINKY BOOTS (Ens.). She has also been seen regionally in B.A.R.S. (Swing) at Playhouse Square, and THE TEMPEST (Gonzalo u/s) and A CHRISTMAS CAROL (Swing) at Great Lakes Theater. Their first movie, WORMWOOD FALLING, is premiering in 2022 produced by Shreek Theater in Cleveland. She will be seen next in MUCH ADO ABOUT NOTHING (Margaret) at Great Lakes Theatre. Thank you to G4, and BWMT for all the support and guidance!



GRACEE STREET (Bridget) is a senior MT major at Baldwin Wallace from Austin, Texas. This is her first production at The Beck Center! Recent performances include Seussical at Weston

Playhouse, BW's performance of Cabaret as Fritzie and BW's virtual production of Spring Awakening as Anna. This past fall semester, Gracee attended the Danish National School of Performing Arts in Fredericia, Denmark. Here, she further studied her craft in musical theatre and was able to explore her creativity in Europe. She is looking forward to graduating and moving to NYC alongside her peers in the Spring. She would like to thank her family and her amazing mentors at BW for a wonderful four years. @graceestreet



HANAKO WALRATH (Alice US) is a junior music theatre major at Baldwin Wallace University. Most recent regional credits include A CHRISTMAS CAROL at Great Lakes Theatre, SOUTH PACIFIC (Liat) with the

Cleveland Orchestra, KINKY BOOTS (collegiate premiere), and BE MORE CHILL (Christine) at 4 Chairs Theatre. Lots of love to parents, Gary and Yoko, and sister, Maiko. @hanakowalrath

PRODUCTION

MICHAELA HENRY (Assistant Stage Manager) is a junior Arts Management & Entrepreneurship and Theatre: Stage Management double major from Springfield, PA. She is overjoyed to be back working on live theatre! She recently served as an assistant stage manager on STUPID F%#KING BIRD and B.A.R.S. Most recently she served as an assistant stage manager on the BWMT production of INTO THE WOODS. She'd like to give an enormous thank you to her family and friends for always supporting her!

CHARIS ELLET (Assistant Stage Manager) is currently a junior at Baldwin Wallace University, earning her degrees in Theatre: Stage Management and Creative Writing. She originally hails from Columbus, Ohio. Past BW credits include: TWELFTH NIGHT (PSM), NEIGHBORHOOD 3: REQUISITION OF DOOM (PSM), FYOO ZH EN '21: FLOODCITY (ASM), STUPID F%#KING BIRD (ASM), PELLEAS + MELISANDE (ASM). She would like to thank her parents, her roommate Emily, and her brother Caden, for all of their unwavering support. She would also like to give a special thanks to Imani Robinson and Michaela Henry for making up the best SM team ever. Lastly, thank you to Vicki for giving her such a wonderful opportunity to work on one of her dream shows. It's been quite the ride! www.charislayne.com

DANNY BÓ (Assistant Director) is a Sophomore Music Theatre Major from Sarasota, FL. Danny was recently seen as Jack in INTO THE WOODS and is now excited to be making his assistant directorial debut. He would like to thank Victoria Bussert for trusting him with this project and taking him under her wings

Savoir-Faire Magazine

**Highlighting Small & Minority
Owned Businesses
Since 1997**



Daphney Grier,
Editor & Publisher

www.sfmag.biz
daphney@sfmag.biz
800-581-5950

We are specialists in
Affordable Diversity
Marketing & Advertising

*Congratulations to the Beck Center for another
wonderful season!*

(pun intended). He would also like to thank all the strong women in his life for making him the person he is today. Danny Bó can be seen next as Percy Jackson in Playhouse Square's production of THE LIGHTNING THEIF.

JEFF HERRMANN (Lighting & Scenic Designer) is pleased to return to Beck Center for the Arts as the scene and lighting designer for LIZZIE. Previous Beck Center design works include THE LITTLE MERMAID, IN THE HEIGHTS, MARY POPPINS, SPRING AWAKENING and NEXT TO NORMAL. Other selected design credits include MAMMA MIA, THE MUSIC MAN, MY FAIR LADY, THE SECRET GARDEN, LES MISERABLES, SWEENEY TODD, CABARET, THE HUNCHBACK OF NOTRE DAME, and INTO THE WOODS, all joint productions between Great Lakes Theater and Idaho Shakespeare Festival. Jeff is a professor of theatre at Baldwin Wallace University and is the resident scene designer. He holds an MFA in scene and lighting design from Southern Illinois University. Jeff is a resident of Lakewood where he lives with his husband, Bob.

CARLTON GUC (Sound Designer) design credits include Jane Eyre (Cleveland Musical Theatre); Ragtime (Cain Park 2019), Memphis (Cain Park 2018), Rock of Ages, Music Man (Cain Park 2017); An Act of God, Shrek - The Musical, Once, Lady Day (Beck Center); Into The Woods (CSU); Oliver, A New Brain (Hathaway Brown Theatre Institute); Rocky Horror (LCCC); Mix credits include The Singing Angels; Matilda (Beck Center). Between shows you'll find Carlton playing guitar, writing computer software, or coaching skiing; www.carltonguc.com

CHARLOTTE M. YETMAN (Costume Designer) is Director of Costume Design at Baldwin Wallace University where she recently designed Cabaret, Lizzie, Intimate Apparel, Anything Goes, West Side Story, Carmen, Dark of the Moon, and Eurydice. Among her professional credits are designs for, My Fair Lady, Secret Garden, Sweeney Todd, Cabaret, The Mystery of Edwin Drood, Arsenic and Old Lace, The Complete Works of William Shakespeare (Abridged) (Idaho Shakespeare Festival & Great Lake Theatre Festival); Comedy of Errors, Hound of the Baskervilles (Lake Tahoe Shakespeare Festival), Lady With All

The Answers, Custody of the Eyes (Cleveland Play House); Frankenstein (Tennessee Repertory Theater); Silver Dollar, John & Jen, Das Barbecue, Heartbeats (Goodspeed Opera House); Conrack (Ford's Theater); Super Sunday and Widows (Williamstown Theater Festival); and the American premiere of Ballenchine's Mozart Violin Concerto No.5 with Tulsa Ballet Theater. Charlotte received her BFA from Pennsylvania State University and her MFA from New York University, Tisch School of the Arts. She has been an assistant scenic designer with Oregon Shakespeare Festival and is a member of USA 829.

BETTY PITCHER (Wardrobe Supervisor) is the Wardrobe Manager and Costume Rental Coordinator at the Beck Center. Her Beck Center credits include: MATILDA, SHREK, GYPSY, LITTLE MERMAID, TRIALS OF ROBIN HOOD, SEUSSICAL, CINDER-ELLA, LARAMIE PROJECT, ALL GREEK TO ME, SNOW WHITE'S ADVENTURES, and SCHOOL HOUSE ROCK LIVE. She has been a costume designer for more than 12 years and has created custom costume pieces for Beck Center for the Arts, Player's Guild, Chagrin Valley Little Theatre and North Canton Playhouse. Betty would like to thank her son, Jeremy for "volunteering" her to "help" all those years ago. Betty's Costume Creations & Rentals (BCCR)

ANGIE HAYES (Sound Mixer) has designed and mixed sound for productions at many area theaters, colleges, and high schools. She has also recorded and sound designed for several podcasts, including SIDEWALK, MUNCHEN, MN, and a radio play series for The Endangered Species Theatre Project of Frederick, MD. She has a Bachelor Degree in Music from the University of Wisconsin Oshkosh, with an emphasis in Recording Technology and Music Business.

**Members of Actors' Equity Association, the Union of Actors and Stage Managers*

Beck Center Annual Contributors

We gratefully acknowledge the support of the following individuals, corporations, foundations, governments, and organizations which have made contributions to our Annual Fund to Beck Center for the Arts in support of our mission to inspire, enrich, and transform through dynamic arts experiences. The current listing includes donors of \$250 or more from October 18, 2020 through January 18, 2022. We greatly appreciate all of our supporters and apologize for any errors or omissions. For any corrections or more information on the benefits of these giving circles, please contact our Director of Development, **Megan DeFranco**, at mdefranco@beckcenter.org
216.521.2540 x18

INDIVIDUALS, FOUNDATIONS, CORPORATIONS AND ORGANIZATIONS

LEADERSHIP CIRCLE

(\$10,000 and above)

Dale and Cindy Brogan
Milan G. Busta*
The Cleveland Foundation
Community West Foundation
Cuyahoga Arts and Culture
Cuyahoga County
The William R. Daniels Memorial
Fund
Dorn Family Foundation
Joan Alice Ford
The Char and Chuck Fowler Family
Foundation
Chann Fowler-Spellman and Ed
Spellman
The George Gund Foundation
Bonnie J. Hagerman
Kulas Foundation
The Vida C. Logan Fund
Ryan and Alysia McKean
William Minnich
John P. Murphy Foundation
The Nord Family Foundation
Michael and Carol O'Brien
Ohio Arts Council
Lee and Maria Parks
The Reinberger Foundation
Brad and Margaret Richmond
Sandy Sauder
Vivian H. Schulze Trust
Small Business Association
State of Ohio
Three Arches Foundation
Turner Construction Company

FOUNDER'S CIRCLE

(\$5,000 to \$9,999)

Rachel Abernethy
The George W. Codrington
Charitable Foundation
FGI Foundation
Harry F. Fox and Emma R. Fox
Charitable Foundation
Jackson Lewis P.C.
Terry and Dona Jones
The Laub Foundation
Sean Malloy
Nancy and John McMillan

Pat and Jim Oliver
John A. Reynolds
Kevin Smith and Cassandra Simon
Stephanie Spahr
Jean Stell
Ellen Todia and David Matthiesen
Landon Tracey and Corey Donovan
Tracey
Laird and Jennifer Wynn

BENEFACTOR'S CIRCLE

(\$2,500 to \$4,999)

Anonymous (2)
Carol Barnak
Curt Brosky and Betty Tereck
Michael and Leslie Brown
Mary Anne and Byron Crampton
The Cyrus Eaton Foundation
Syma Dar
Michael and Amy Daso
Development Services Agency
Eaton Charitable Fund
Gregory Good and Adrienne
Embery-Good
FBC Chemical Corporation
Jenny and Ralph Febbo
Richard and Judy Fox
Charles and Marie Grossman
Chuck and Nancy Gustafson
William C. Hartman
Jim Hayes and Madeline Muser
Hayes
Karol Hoeffler
Doug Hoffman and Ron Stach
Emily Jett and Mark Getsay
Andrew L. Killian
Nancy C. Krueger
Bill and Joyce Litzler
Dave and Traci Nolan
Protiviti Inc.
Jeffrey and Susan Ritter
Karen Rockhold
Sherwin Williams Foundation
Sherwin-Williams Company
Bill Spence
Mr. and Mrs. John Steinbrunner
David Priest
Thomas J. Coltman Foundation
Thomas Wagner and Malinda
Smyth

CHAIRMAN'S CIRCLE

(\$1,000 TO \$2,499)

Anonymous
State Senator Nickie Antonio and
Jean Kosmac
Sean and Erin Arbeznic
Mark Bartlett
Kathleen A. Baskoff and Steven
Schwarz
Benevity
Gregory and Susan Bergmann
The Bonne Bell Family Foundation
Sarah J. Buck
Georgia A. Burley
Eddie-Lou and Lew Bush
Mary Beth Campbell and Mark
Sistek
Jane Christyson and Robert
Mahoney
Rosemary Corcoran
Steve DeJohn
Mary Ann and Dave Dombrowiak
The Dominion Energy Charitable
Foundation
Cindy and Tom Einhouse
The Foell Family
Cindy and Tim Friedmann
Michael Fulton
Thomas Gehlbach and Warren
Stauffer
Henry Hilow and Judy Ghazoul-
Hilow
The Giant Eagle Foundation
Frances Goins
Goodman Real Estate Services
Group, LLC.
Kathy and Ken Haber
Barbara and Bob Hall
Harold L. and Patricia D. Williams
Charitable Fund
Brian Murphy
John and Mary Kay Jefferson
David and Cheryl Jerome
Jewish Federation of Cleveland
Gary and Rose Juhnke
Kim and Nora Katzenberger
KeyBank Foundation
Edward Knotek
Gerrit and Peg Kuechle
Lakewood Arts Festival

Lakewood-Rocky River Sunrise
Rotary Club
Jay and Sally Magee
Kathleen McGorray and Bob Soffer
Melt Bar & Grilled
Mickey and Larry Mencin
The Music and Drama Club
David and Inez Myers Foundation
Larry Nance Jr.
Debbie L. Neale
Rebecca Niemiec
Dr. and Mrs. Peter Nintcheff
Nordson Corporation Foundation
Deborah and John O'Neill
Anne and Jack Palomaki
Barbara and Bob Paynter
Jim and Barbara Pearce
Tim Penton and Jay Gardner
Amy and Tom Petrus
Mike and Lori Petti
Jeff and Nora Poore
John and Norine Prim
Renaissance Charitable
Foundation, Inc.
Patrick and Angela Rollins
Eugene and Marge Ruminski
Patty and Jim Ryan
Richard and Mary Sanders
William and Susan Schmitt
Galen Leigh Schuerlein, Esq.
Astri Seidenfeld
The Walter V & Judith L Shipley
Family Foundation
Brian Sinchak
Donna Rae and Edward Smith
Sweet Designs
Kenneth and Martha Taylor
The Wonderful Company
Foundation
Maureen and Raymond Votypka
Joe and Kathy Ward
Jonathan Ward
Mary C. Warren
Margaret Weitzel
Michael Wightman
Dave Willett and Steve Meka
Women's Board of Beck Center
Judith and Walter Wright
Janice Young
Genny Zarnick

PRESIDENT'S CIRCLE
(\$500 TO \$999)

Thomas and Joann Adler Family
Philanthropic Fund
Joel and Teresa Andreani
Anonymous (2)
Elise and Steve Auvil
The Bay Foundation
George and Sandra Berendt
Fred and Laura Bidwell

Amy Holtshouse Brennan
DeDe and Bruce Burton
Marianne and Jack Byrne
Nancy and Jack Calcott
Robert and Mary Calsin
Douglas Cass
Cetera Advisor Networks
Charities Aid Foundation of
America
Mary Coe
Beverly Coen
Craig and Jan Cook
Doug Cooper
Ray and Dawn Cushing
Megan DeFranco
David Delgado and Linda Springer
Robert Deline
Sherrie Desmond
Dewey's Pizza
Joel and Bonnie Egertson
Equitable Advisors
Sara and David Fagnilli
Jon and Mary Fancher
Mary Eileen Fogarty
Pam Gallagher
William Garrison and Mary Jo
Mlakar
A.J. Cianflocco and Mary Anne
Garvey
Bill and Jayne Gaydos
Bill Gorton and Susie Blackburn
Gradient Think Tank
Joan and Tom Hartshorne
Karen Skunta & Company
James Keily
S.C. Kirkland
Carol Klar
Barb and Charlie Koch
Mickey and Patty Krivosh
Latham Family
Matt and Angela Lay
Steven M. Licciardi
David and Susan Lorenz
Tony Marini
James and Ellen Marsey
Jack and Lois Mowry
Rick and Jane Nash
Network for Good
Patrick and Sharon Perotti
Peggy and Dominic Perry
PNC Foundation Matching Gift
Program
Timothy and Jen Powers
Raising Cane's
Tom and Helen Rathburn
Martin Saltzman
Michael and Michelle Smith
Pam and Tom Smith
Sally Staley
Art and Sherri Stehlik
Timothy and Debra Swartz
James and Marilyn Taylor

Martin and Laura Uhle
Sara and Jason Verderber
Gina Vernaci and Bill Hilyard
Jim Vine
Larry and Elizabeth Weiss
Kristine Wellman
Benjamin and Melanie Whiting
Bill and Ann Zabkar

DIRECTOR'S CIRCLE
(\$250-\$499)

Dena and Daniel Adler
Cathy and John Aldrich
AmazonSmile Foundation
Anonymous
M. Karen Aylward
Robert Bade and Linda Hurley
Dede Baker
David Bennhoff
Ruth B. Bertrand
Linda M. Betzer and Iris Bishop
Martha and Wayne Bifano
Bill and Janet Bird
Janice and Jack Campbell
Sally Carr
Patrick Carroll and Diana
D'Alessandro
Deborah Clare Laub
Mike and Jacque Coyne
Elizabeth Cross
Carol Crowe
Cindy and Bob Fairchild
Judy and Steve Fesko
Scott and Kris Fisher
Colleen Flennoy
Eileen and John Gallagher
Franca Garofalo
David and Sarah Gedeon
Mr. and Mrs. Barry Glazer
Julia Harding
John W. Hollopetre
Andrew Janick
Mary and Chris Kay
Jack and Kim Kellogg
Stanley W. Kline
Alice Lang
Mark and Jo Anne Larkman
Lynn and Mary Lazzaro
Kathleen Legg
William Lohn
Mary and Brian Marita
Jay Marshall
Richard and Karen Middaugh
Pat and Tina Miller
Stephen Mitchell Brown
Photography
Michael and Peggi Mizen
Thomas Murphy
Larry and Shelly Napolitan
Steve Norris
James Oliver

Glending Olson and Hester
Lewellen

Eileen Pappalardo

Eileen Paskert

Sue Pedro

Allan and Barbara Peskin

Gloria Plevin

Judy and John Pyke

Melissa Richmond

Heather Richmond

John J. Ritchey

Mary Roach

Barbara S. Robinson

Linda Rocchi

Laurie and Jim Rokakis

Keith and Donna Rush

Ron Rydarowicz

Dorothy Salem

Constance Sarvay and Sally

Culpepper

Sue Schroer

Dave Turner and Rebecca Shaw

LuAnn Shuster and Joe Tucker

Mary Lynne and David Slife

Arthur E. Spector

Kathleen J. St. John

Timothy C. Stevens

Elizabeth Stirling and Tom

Millward

K.K. and Joe Sullivan

Arthur L. Thomas

Denise and Charlie Toil

Karen Tolhurst

University Tees

Nelson Wagner

Robert C. and Emily C. Williams

Marianne Wills

Thomas Wrabel

*indicates deceased

WITH SPECIAL THANKS

Cuyahoga County residents through
Cuyahoga Arts and Culture
Ohio Arts Council

HONORARY GIFTS

Beck Center for the Arts would like to
thank those who have given gifts in
honor of the following individuals:

Abdollahian, Kay, Schwede, Gallagher
Clan
Randy and Deena Baenen
Rita Barniak
Beck Center Dance Teachers
Eileen, Olivia and Cameron Brady
Helen Corns
Symba Dar
Edward Dee
Cindy Einhouse
Betsy Feierabend
Aimee Guzowski
Jack Lazzaro
Ingrid Matera
Anne McEvoy
Audrey McNulty
Mickey Mencin
Iris November
Mike and Carol O'Brien
Garretson Oester
M. Patricia Oliver
The Powell Family
Bella Ramirez
John Reynolds
Ally Rovito
Lynda Sackett
Benjamin L Sakai
Scott Spence
Alexander Seibert
Wally and Joyce Senney
Bill Spence
Art Stehlik
Melanie Szucs
Thomas Wagner
The Watts Family

Matt and Sarah Winters
Jack and Eva Wynn

MEMORIAL GIFTS

Beck Center for the Arts would like to
thank those who have given gifts in
memory of the following individuals:

Sharyn Bailin
Joseph Bandille
Emily Baskoff
Alekie Delis Bennhoff
Aaron Boron
Judith Buerkel
Lew Bush
Walt Campbell, Mary Campbell Nir, and
Margaret Campbell
Tim Carpenter
Marilyn Helen Clough
Lee Ann Curry
Rosemarie Feighan DeJohn
Nick Amster Fishelson
Virginia Fisher
Robert and JoAnne Hahn
Thomas Oak Hardington
William J. Harper
Maurice L. Heller
Mark and Lowell Holloway
Barbara Hunter
John V. Jackson II
Faith Killius
Barbara Nussbaum King
Eleanor F. Kushnick
Clara Lacey
Hester Lewellen
Leo Lightner
Ethelyn Richmond
Donald F. Santa-Emma
Dorothy Silver
Barbara Swearingen
Lindsay Taylor
Dave Tolhurst
Vilma Vargo

Beck Center's Youth Theater
program is supported by The Mary
Ward Scholarship Fund.

The Beck Center Dance Program
is supported by the Lynda
Sackett Endowment for Dance
Education and the James Kurtz
Memorial Endowment Fund.

The Community West
Foundation is a proud supporter
of Creative Arts Therapies at
Beck Center for the Arts.



PROFESSIONAL FLARE FOR THOSE
REVOLTING CHILDREN!

BRILLIANT COSTUMES FOR

ROYAL DANCE
Matilda
THE MUSICAL

AND EVERYTHING ELSE!

Costume rentals from the Beck Center production
are available now. We have a growing inventory
of rental pieces to suit your needs, and can even
take custom orders for that special something!



BETTY'S COSTUME CREATIONS & RENTALS

Northeast, Ohio

www.bettypitcher.com

330.329.3505

bettycostumecreations@gmail.com



Inline

TECHNOLOGY SERVICES

CommuniKate™ Phones/VoIP

A phone system for your Non-Profit or Small Business with all the bells and whistles you need at a price you can afford.

As low as \$2.95 per line plus minutes!

Email carlton@inlinetechnology.com for more information.

Custom Software | Managed IT Services | Unified Communication
216-221-4600 | www.inlinetechnology.com



**Championing arts and culture in the
Buckeye State through advocacy,
education, and engagement.**

#OhioArtsStrong
www.ohiocitizensforthearts.org



**Cleveland
vegan**

organic scratch kitchen

17112 Detroit Ave/Lakewood

216-221-0201

Catering, Cafe, Bakery
clevelandvegan.com

Creating Our Future Campaign Contributors

We gratefully acknowledge the support of the following individuals, corporations, foundations, and organizations that have contributed \$1,000 or more to Creating Our Future: The Campaign for Beck Center.

For information on naming opportunities and touring our renovations, please contact our Director of Development, **Megan DeFranco**, at mdefranco@beckcenter.org. As we look to finish Creating Our Future, please know that we also accept gifts of stock and securities. Please visit beckcenter.org/give for more information and make a lasting impact for families in our community.

\$1,000,000+	Mary and Tom Holland Michael and Carol O'Brien Lee and Maria Parks	Commercial Interior Resources, Inc. Elaine and David* Cook Mary Anne and Byron
\$500,000 - \$999,999	Pam and Tom Smith Michael and Wendy Summers Women's Board of Beck Center	Crampton Dependable Painting Company Eaton Charitable Fund
\$100,000 - \$499,999	\$25,000 - \$49,999 Anonymous Joel and Bonnie Egertson Charlotte and Charles Fowler Richard and Judy Fox The William O and Gertrude Lewis Frohring Foundation The Giant Eagle Foundation Charles and Marie Grossman Terry and Dona Jones Gerrit and Peg Kuechle Dennis and Kim Lansdowne The Nord Family Foundation Tim Penton and Jay Gardner Brad and Margaret Richmond Lynda Sackett and Bill Knoble* Kevin Sauder The Kent H. Smith Charitable Trust Margaret Weitzel	Cindy and Tom Einhouse David Greenspan and Mary Kim Elkins Thomas and Mary Ellen Fraser Cindy and Tim Friedmann Bill Garrison and Mary Jo Mlakar Charles and Nancy Gustafson Doug Hoffman and Ron Stach Elda C. Krach Lakewood and Rocky River Rotary Foundation Sean Malloy Mickey and Larry Mencin Pat and Jim Oliver Anne and Jack Palomaki Anthony and Mary Rego Laura and David Sangree Carolyn P. Seelbach* Gina Vernaci and Bill Hilyard Thomas Wagner and Malinda Smyth Mary C. Warren Laird and Jennifer Wynn
\$50,000 - \$99,999	Dale and Cindy Brogan The George W. Codrington Charitable Foundation Doug and Karen* Cooper David Deming Dorn Family Foundation	
	\$10,000 - \$24,999 Anonymous (3) Bialosky & Partners Architects Curt Brosky and Betty Tereck	

\$5,000 - \$9,999

Dena and Daniel Adler
American Endowment
Foundation
Anonymous
Mark and Cynthia Bacon
Carol Barnak
Ruth B. Bertrand
The Bonne Bell Family
Foundation
Monica Brown
Georgia A. Burley
Nancy and Jack Calcott
Syma Dar
Michael and Amy Daso
The Dominion Energy
Charitable Foundation
David and Virginia Estrop
Larry and Rosemary Faulhaber
Dorothy Ginley-Bahm
Kim and Nora Katzenberger
Andrew L. Killian
John and Judy Kropf
Lakewood-Rocky River Sunrise
Rotary Club
William LaPlace
Carol Latham
Terrence and Karen McHugh
Ryan and Alysia McKean
Nancy and John McMillan
Patricia and George Miller
Rebecca Niemiec
Barbara and Bob Paynter
Jeff and Nora Poore
Donna Rae and Edward Smith
Art and Sherri Stehlik
Theater Alliance of Beck Center
Richard and Gail Tanner
Landon Tracey and Corey
Donovan Tracey
Turner Construction Company

\$1,000 - \$4,999

Rachel Abernethy
Adobe Systems Incorporated

Joel and Teresa Andreani
Anonymous
Brenda and George Anthony
State Senator Nickie Antonio
and Jean Kosmac
AXA Advisors LLC
Sam and Chrysa Babic
Kathleen A. Baskoff and Steven
Schwarz
Kathryn Berkshire
Liz and David Breudigam
Robert and Mary Calsin
Lynda Carter
Charities Aid Foundation of
America
Colleen Clark-Sutton and Tom
Sutton
Community West Foundation
Hal and Connie* Cooper
Rosemary and Richard*
Corcoran
Tim and Tracy Coughlin
Joanna and Marc D'Agostino
Mary Beth and Jeff DeClerck
Tom and Tricia Dent
Sherrie Desmond
Gregory Good and Adrienne
Embery-Good
Victor and Janet Erml
Jon and Mary Fancher
Jenny and Ralph Febbo
FGI Foundation
The Gagen Family
Henry Hilow and Judy Ghazoul-
Hilow
Joe and Peggy Gibbons
Kathy Goepfert
William Gorton and Susie
Blackburn
Gerald and Pennie Gray
Barbara Hueter and Andrew
Zajac
Hyland Software, Inc.
Impel Creative, Inc.
John and Mary Kay Jefferson
Emily Jett and Mark Getsay
Robert and Betty Karras
Mary and Chris Kay

KeyBank Foundation
Cathy and Peter Kuhn
Cindy and Jake Marx
Freida McGee and Michael
Wochna
Kathleen McGorray and Bob
Soffer
Dave and Val Mechenbier
Marcello and Shelley Mellino
Carol and Dale Miller
Colin and Sarah Moeller
Lauren Mueller
John P. Murphy Foundation
Dr. and Mrs. Peter Nintcheff
John O'Brien
Deborah and John O'Neill
Naomi Opdycke
PNC Foundation Matching Gift
Program
Donna and George Puskas
John J. Ritchey
Jeffrey and Susan Ritter
Brian Sapola and Jessica
Lovich-Sapola
Sharon and Steve Schuldt
The Herb Score Family
Sherwin-Williams Company
Brian Sinchak and Lakewood
Catholic Academy
Victoria and Daniel Smigelski
Jan Soeder*
Bill Spence
Ann Spence
The Staub Family
Arthur L. Thomas
Dr. Timothy Kantz and Megan
Torok
Terry and Candace Vincent
Kathy and Gregg Wasilko
Karen and Jeffrey Weber
Dick West
Karen Youngstrom

**indicates deceased*

It's time for a new identity.

**One that tells the story of creativity
in Ohio and illustrates it.**

Ohio Arts
COUNCIL



Expression is an essential need.

**By better illustrating our story,
we can better help you express yours.**

Complete the story at oac.ohio.gov/identity.

30 EAST BROAD STREET, 33RD FLOOR, COLUMBUS, OHIO 43215-3414 | 614-466-2613

OAC.OHIO.GOV | @OHIOARTSCOUNCIL | #ARTSOHIO

imagine · create · inspire
SPOTLIGHT 2022

Save the date!

Friday, July 22, 2022



Beck Center's
fundraising Gala

Benefitting our mission
to inspire, enrich, and
transform lives through
dynamic arts experiences

For opportunities to be part of making Spotlight sparkle, contact Jay'da Hall, jhall@beckcenter.org