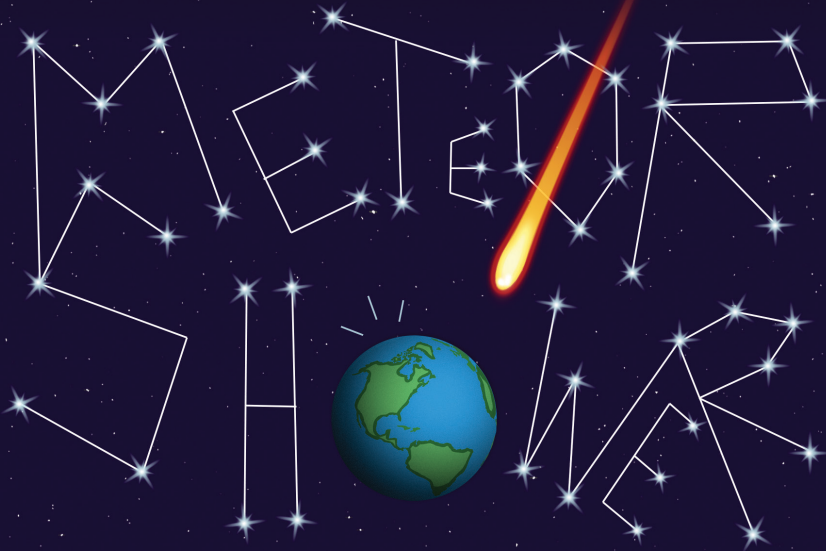


APRIL 1 – MAY 1, 2022
STUDIO THEATER

steve martin's



directed by **SCOTT SPENCE**

Presented by special arrangement with Samuel French, INC.

17801 DETROIT AVENUE, LAKEWOOD, OH 44107
THEATER | EDUCATION | EXHIBITIONS | OUTREACH
beckcenter.org | 216.521.2540 x10

BOARD OF DIRECTORS – 2021 - 2022

M. Patricia Oliver <i>Chair</i>	Michael Brown Jane Christyson Rosemary Corcoran Syma Dar Michael Daso Chann Fowler–Spellman Richard Fox Frances Floriano Goins Emily Jett Angie Kazi Sean Malloy Kathleen McGorray Ryan McKean	Mickey Mencin Michael J. O'Brien Barbara Paynter Amy Petrus Jeff Poore John A. Reynolds Bradford Richmond, M.D. Sandra Sauder Brian Sinchak William Spence Corey Donovan Tracey Thomas C. Wagner Margaret G. Weitzel
Douglas Hoffman <i>Immediate Past Chair</i>		
Lucinda B. Einhouse <i>President and CEO</i>		
Cynthia Brogan <i>Treasurer</i>		
Ellen Z. Todia <i>Secretary</i>		

HONORARY DIRECTORS

Donald G. Bain, Jr. Deborah A. Bridwell, Ph.D. Ruth B. Bertrand Nancy B. Calcott David C. Estrop, Ph.D. Terry L. Jones	Andrew Killian W. James Mayer, Jr. Patricia McNamara William J. Schmitt Marjorie Redmond Ronald Waldheger	Honorary – Ex-Officio Marianne Monahan <i>President Beck Women’s Board</i>
---	--	---

NATIONAL DIRECTORS

Alice Ripley Martin Savidge

MANAGEMENT TEAM

Lucinda B. Einhouse.....	President and Chief Executive Officer
Scott Spence.....	Artistic Director
Megan DeFranco.....	Director of Development
Edward P. Gallagher, MT–BC.....	Director of Education
Julie Gilliland.....	Director of Marketing
Larry J. Goodpaster.....	Director of Finance & Operations

ADMINISTRATIVE AND PRODUCTION STAFF

Tracy Ammon, MT–BC.....	Associate Director of Creative Arts Therapies
Charles Battaglia.....	Development & Volunteer Coordinator
Sarah Clare.....	Associate Director, Theater Education
Mark DeVol.....	Technical Director
Tim Chrisman.....	Associate Technical Director
Danielle Doré.....	Pottery Studio Manager
Jennifer Feierabend.....	Annual Fund Manager
Melinda Glass, MT-BC.....	Music Therapist
Ann Huebner.....	Registration Support Manager
Jay'da Hall.....	Development Assistant
Tim Keehn.....	Facilities Manager
Ryan Lucas.....	Visual Communications Designer
Jessica F. McGrath.....	Assistant Director of Education
Linda Merchant Pearce.....	Gallery Coordinator
Michael Simile, MT-BC.....	Music Therapist
Melanie Szucs.....	Associate Director, Dance Education
Jake Tisdale.....	Accounting Assistant
Rennie Tisdale.....	Customer Service Manager
Erica Tkachyk.....	Senior Finance Manager
Alessandra Rovito, Justine Horning, Paige Smith, Ivy Rook.....	Customer Service Associates
Andrew Flinn, Jacob Matthews, Alastair Stockdale.....	Facilities

Act one begins



Beck Center for the Arts

... WITH INVESTMENT BY CUYAHOGA ARTS & CULTURE

Cuyahoga Arts & Culture (CAC) uses public dollars approved by you to bring arts and culture to every corner of our County. From grade schools to senior centers to large public events and investments to small neighborhood art projects and educational outreach, we are leveraging your investment for everyone to experience.



Your Investment:
Strengthening Community

Visit cacgrants.org/impact to learn more.

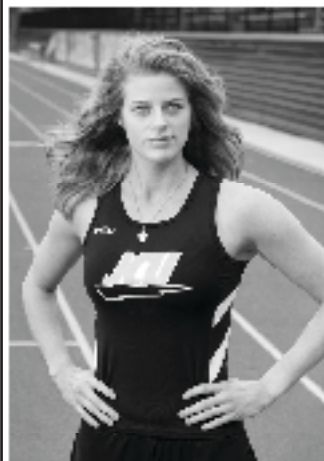


BERKSHIRE HATHAWAY

HomeServices

Lucien Realty

- Check your home's performance at:
www.HomeValuesInLakewood.Info
- CHRIS BERGIN
216.244.7175
Chris@ChrisBergin.com



Wetzler's
PHOTOGRAPHY

Advertising • Commercial • Editorial
216-771-1554 wetzlers.com



Waldheger Coyne

a legal professional association

“...All the best performers bring to their role something more, something different than what the author put on paper. That’s what makes theatre live. That’s why it persists.”

Stephen Sondheim

Gemini Tower I, Suite 550
1991 Crocker Road
Cleveland, Ohio 44145
440-835-0600

Assistive Listening Devices @ BECK CENTER

Assistive Listening Devices (ALDs) amplify and clarify sound by cutting down or eliminating ambient noise. Assistive Listening Systems are installed in both the Senney Theater and the Studio Theater and were completely overhauled during the summer of 2021 to improve sound quality and performance. Headsets may be used at any seat and, with the upgrade, induction neck loops are also now available for patrons who use hearing aids and cochlear implants with a “T” switch. **Ask your audiologist whether your hearing aid or cochlear implant has a “T” switch (telecoil) and how to use it with an assistive listening headset.**

Who can use an Assistive Listening Device?

Everyone! While induction neck-loops are only compatible with hearing aids and cochlear implants that include a “T” switch, the ear speaker can be used by anyone who wants a little volume boost.

Will the patrons next to me be disturbed by the Assistive Listening Device?

ALDs are designed to deliver sound directly to an individual and work using specific reserved radio frequencies so as to not conflict with any other devices or equipment in use by the theatre or our patrons. In addition, the ear speakers and the neck loops are designed to be as inconspicuous as possible. It's likely no one will even know you're using one.

Are Assistive Listening Devices available for every show and event at Beck Center?

YES! As long as the event is held inside the Senney or Studio Theater.

Do I need to request an Assistive Listening Device in advance?

You do not need to request an ALD in advance of arriving at the theatre and an ALD can be requested at any time during an event. ALDs are distributed on a first-come-first-served basis free of charge. You may request your ALD at the Customer Service desk in the Beck Center lobby.

Is there a cost for using an Assistive Listening Device?

No, ALDs are distributed free of charge on a first-come-first-served basis.

Do I need to sit in a specific place to use an Assistive Listening Device?

No, all of our ALDs will work from any seat in any of our three theatres.

Do you clean your Assistive Listening Devices?

Yes, we follow the manufactures maintenance recommendations and use antimicrobial wipes to clean all earpieces and neckloops when they are returned before placing them back into storage.

Do I need to arrive early to obtain an Assistive Listening Device?

While obtaining an ALD will not take very long, we strongly recommend that all patrons arrive AT LEAST 20 minutes before the performance to allow time to park, get to the theatre, and find your seat.

I have a hearing aid or cochlear implant, will an Assistive Listening Device work for me?

Induction neckloops are also now available for patrons who use hearing aids and cochlear implants with a “T” switch. Ask your audiologist whether your hearing aid or cochlear implant has a “T” switch (telecoil) and how to use it with an assistive listening headset. Patrons find this to be the best way to use the ALD's.

I have severe hearing loss, will an Assistive Listening Device work for me?

ALDs will generally help anyone who can understand normal conversation either without aid or with a hearing aid. For more severe hearing loss, an ALD alone may not be enough.

**Questions? Just call Customer Service at
216.521.2540 x10 or email boxoffice@beckcenter.org**

House Information

USE OF CAMERAS OR RECORDING DEVICES DURING THE PERFORMANCE IS PROHIBITED.

ACCESSIBILITY – Wheelchair ramps, an elevator, and accessible restrooms make all areas of Beck Center accommodating to all patrons. Theatergoers in wheelchairs should request seats in Row J.

BOX OFFICE HOURS – 12pm - 8pm Monday through Thursday; 12pm - 5pm Friday; 9am - 5pm Saturday; 12 pm - 4pm on Sundays during performance times; and open through intermission on performance dates. For ticket information visit beckcenter.org or call 216.521.2540 x10.

CELL PHONES – Please turn off all cell phones and audible devices as the sound and screen light are distracting to the audience and especially the cast. Texting is not permitted during performances. Copyrights strictly prohibit the photographing, audio or video recording of all productions. Cameras and cell phones may be confiscated.

LARGE PRINT PLAYBILLS – Are available upon request at our Customer Service desk.

FIRE – Exits indicated by red lights are the shortest route to safety. In case of an emergency, please walk to the nearest exit.

LOST & FOUND – Customer Service maintains a Lost & Found service as a courtesy to our patrons. Please report any misplaced items, lost or found, immediately.

PARKING – Convenient, free, on-site parking.

RECYCLING – Beck Center believes in recycling. If you decide to discard your playbill, bottles or cans, please do so in the designated recycling receptacles.

RESTROOMS – Restrooms are located on the ground floor near the garden court at the west end of the Galleria and on the second floor just outside the elevator.

SMOKING – Beck Center is a non-smoking facility. Smoking is permitted outdoors.

About Beck Center

Beck Center for the Arts is proud to be a part of Northeast Ohio's professional theater landscape. Like our colleagues Playhouse Square, Cleveland Play House, Dobama Theatre, and Great Lakes Theater, Beck Center has a letter of agreement with Actors' Equity Association. We hire professional actors from the Northeast Ohio region, including members of Actors' Equity. Specifically, we are a Small Professional Theater (SPT) based on the number of seats, number of our performances, and the maximum weekly hours of work we provide to actors. We are also a producing theater. We produce every show on our stages. Meaning we choose the play, cast and rehearse it, build the sets, props, and costumes, direct and perform the music, and design lights and sound, utilizing regional resources and talent, all for you, our valued patron of the arts. Thank you for supporting live theater!



**DOBAMA
THEATRE**

**AN
IRREVERENT COMEDY
THAT REMINDS US THAT **LIFE STAGGERS,**
LIFE CONFOUNDS,
LIFE IS BEAUTIFUL
AND...**

LIFE SUCKS

**SORT OF ADAPTED FROM
UNCLE VANYA BY ANTON CHEKHOV**

APRIL 22 - MAY 22

**WRITTEN BY AARON POSNER
DIRECTED BY NATHAN MOTTA**

216.932.3396 • DOBAMA.ORG

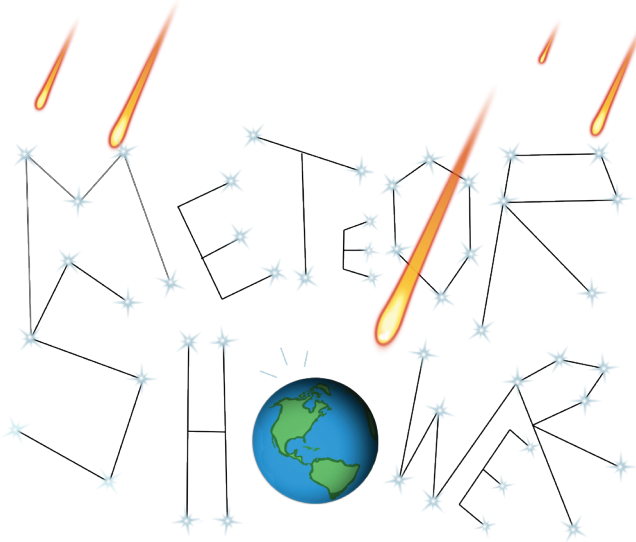


Beck Center for the Arts
17801 Detroit Avenue, Lakewood, OH 44107

Lucinda B. Einhouse, President & CEO

Scott Spence, Artistic Director

Presented by special arrangement with Samuel French INC.



written by

STEVE MARTIN

directed by

**SCOTT
SPENCE**

production stage manager

**JAMIE
BENETTO**

set design by

**CAMERON CALEY
MICHALAK**

costume design by

**INDA
BLATCH-GEIB**

lighting/Projection

design by

**TIM
CHRISMAN**

sound design by

**ANGIE
HAYES**

This play will be performed **WITHOUT** an intermission

Meteor Shower premiered at the Old Globe Theatre in San Diego, CA in July 2016 under the direction of Gordon Edelstein.

Sponsored by



Video or audio recording of this production is strictly prohibited.

**Members of Actors' Equity Association, the Union of Actors and Stage Managers*

Setting

August 1993 - Ojai, California

Cast of Characters

Laura Mielcarek*	Corky
Abraham Adams*	Norm
Leilani Barrett*	Gerald
Leslie Andrews	Laura

* Actor appears courtesy of the Actors' Equity Association (AEA) | + Actor is an Equity Member Candidate (EMC)

Production Staff

Artistic Director/Director	Scott Spence
Production Stage Manager	Jamie Benetto
Assistant Stage Manager	Hayley Baran
Technical Director	Mark DeVol
Associate Technical Director	Tim Chrisman
Scenic Designer	Cameron Caley Michalak
Lighting/Projection Designer	Tim Chrisman
Costume Designer	Inda Blatch-Geib
Sound Designer	Angie Hayes
Wardrobe Supervisor	Betty Pitcher
Decking Crew	Julia Aylward
Carpenter/Paints	Simon Sedmak
Scenic Artist	Megan Mingus



This retrospective will launch the Paul and Norma Tikkanen Painting Prize, coming in October 2022. This contemporary painting competition will be open to NE Ohio & NW Penn, with over \$30,000 in artist awards.



2928 W. 13th Street
Ashtabula, OH 44004
ashtabulaartscenter.org
[facebook.com/ashartscenter](https://www.facebook.com/ashartscenter)
(440) 964-3396

Help us raise the remaining funds needed to:

- build a new ADA accessible entryway
- add more restrooms
- modernize the lobby
- increase the customer service area capacity
- **RAISE THE ROOF** to create the Center for Dance Education
- make your gift online, beckcenter.org/give



Creating
OUR
Future

THE CAMPAIGN FOR BECK CENTER

**Donate to
Beck Center's
Creating Our
Future
Campaign!**



Who's Who in the Company



SCOTT SPENCE (Artistic Director) is

enjoying his 31st season at Beck Center! Since 1990, he has produced over 200 shows, directing over 100 himself. He is very proud of the awards and

acclamations Beck Center has received over the past decade, and is especially grateful for having won the Northern Ohio Live Award for Achievement in Theatre in 2006. Outside of these walls, Scott's directorial assignments have included a remounting of Beck Center for the Arts' hit production of ALTAR BOYZ at Playhouse Square's beautiful Hanna Theatre, DAS BARBECÜ at Opera Cleveland, THE LAST NIGHT OF BALLYHOO at Case Western Reserve University's Eldred Theatre, OH DAD POOR DAD... at Cleveland State University (where he is an adjunct faculty member) Summer Stages, and NOISES OFF at both Weathervane Playhouse in Akron and Berea Summer Theatre. Scott holds an MFA in Directing from Western Illinois University and is a trained stage fight choreographer, having studied extensively with the SAFD. As always, he dedicates all the work he does to his two extraordinarily talented leading ladies, Rachel and Carleigh. You both amaze me every day.



JAMIE BENETTO (Production Stage Manager)

Recently stage managed: THE EXONERATED, THIS GIRL LAUGHS, THIS GIRL CRIES, THIS GIRL DOES NOTHING, SHREK: THE MUSICAL, MY FIRST TIME, ONE FLEW OVER

THE CUCKOO'S NEST, THE LITTLE MERMAID (both years), RUTHLESS!, THE SPITFIRE GRILL, HEATHERS: THE MUSICAL. She also works with Beck Center Youth Theater. Jamie has worked at Cleveland Play House as an Assistant Stage Manager and Production Assistant for RABBIT HOLE, PRIDE AND PREJUDICE, DREAM A LITTLE DREAM, AND CROWNS and GOOD PEOPLE. Other area credits include Ntozake Shange's WHY I HAD TO DANCE at Oberlin College and Playhouse Square, THE SECRET GARDEN at Cain Park, and INTO THE WOODS and THE SEAGULL at Great Lakes Theater.

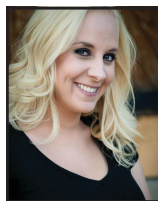
CAST



ABRAHAM McNEIL

ADAMS* (Norm) is a native of Wyoming and came to Cleveland by way of Utah, Oregon, Arizona, Indiana, and New York City. He holds a BFA from the University of

Utah and an MFA from Ohio University. Since 2015, Abraham has been honored to work with a number of theaters in the Cleveland area including Talespinner Children's Theater, Mamaí Theater Company, Ensemble Theatre, Dobama Theatre, Seat of the Pants, Cleveland Public Theatre, and None Too Fragile. For Family, Always.



LESLIE ANDREWS (Laura)

iPast roles at Beck Center include GYPSY (Miss Cratchit/Mazepa), CITY OF ANGELS (Gabby/Bobbi), YOUNG FRANKENSTEIN (Inga), LEND ME A TENOR

(Diana), JERRY SPRINGER: THE OPERA (Zandra/Irene/Mary), and Xanadu (Caliope/Aphroite). Other favorite roles include DEBBIE DOES DALLAS: THE MUSICAL (Debbie), THE TOXIC AVENGER (Mayor/Ma) and HIGH FIDELITY (Laura) at Blank Canvas Theatre. Leslie would like to thank Scott and the rest of the cast and crew for allowing her to share this journey. She is forever grateful for the love and support of her family, especially the guy with the messed up face.



LEILANI BARRETT* (Gerald)

is a veteran of stage, television, commercial, film and voiceover. Recent stage work includes INTIMATE APPAREL and A

CHRISTMAS CAROL. His distinctive voice can be heard in the video game "Aliens: Fireteam Elite" as João Sócrates Santos and in commercials for AMPM, McDonalds, Nike, First Energy, Subway, Time Warner Cable,

Ohio Lottery, Chase Bank, Cincinnati Bell, and more. He can be seen in feature films including "Real Steel" with Hugh Jackman, "Dog Eat Dog" with Nicholas Cage, "The Big Ugly" with Ron Perlman and independent short film "Use of Force". He is currently an adjunct professor at Baldwin Wallace University and acting coach at 1st Team Acting Studio. He is very excited to return to the stage at Beck Center and is grateful to his family for their continued love and support.

imdb.me/leilanibarrett

facebook.com/LeilaniBarrettOfficial/

instagram.com/leilanibarrett/



LARA MIELCAREK*

(Corky) Lara (she/her)

is an actor, educator, and director completing a bangin streak coming out of Covid.

In the past five months:

TWELFTH NIGHT (director,

Laurel School), CINDERELLA (Stepmother, Ohio Shakespeare Festival), HURRICANE DIANE (Pam, Dobama Theatre). She is thrilled to be returning to the Studio stage where she played Kate in SEMINAR. Alongside a respectable body of work (for which she is so grateful and proud) with many NE Ohio theatres, she is a 15 year veteran actor with the Ohio Shakespeare Festival where she has played many of the Bard's leading ladies, and runs a "Shakespeare Behind Bars" style program at the women's prison here in Cleveland. Thanks to Michael for holding down the fort.

PRODUCTION

HAYLEY BARAN (Assistant Stage Manager)

Over the last 19 years, Hayley has been "seen" backstage in a variety of positions including follow spot operator, light board operator, and run crew. She was last seen as the Stage Manager for GLENNGARY GLEN ROSS and Assistant Stage Manager for MATILDA. Other favorite shows have included BENT, WAITING FOR GODOT, and FOREVER PLAID, where she had an on-stage cameo as the Nice Box Lady. Thank you to the wonderful cast and crew for making this such a positive experience.

CAMERON CALEY MICHALAK (Scenic Designer) Regional Theatrical design credits include: Cleveland Play House productions of THESE MORTAL HOSTS, VENUS IN FUR, EVERY GOOD BOY DESERVES FAVOUR and A SOLDIER'S TALE with Catch and Release. CWRU/CPH MFA Acting Program's design credits include PASSAGE, SHE STOOPS TO CONQUER, A PHILADELPHIA STORY, THE THREE SISTERS, THE MISANTHROPE and THE WINTER'S TALE. Cleveland Ballet's THE NUTCRACKER SUITE, ALICE, PROVOCATIVO. Selected local credits include WHEN FARAH CRIES (Borderlight International Theatre Festival); DANCE NATION, JOHN, APPROPRIATE, THE EFFECT, THE NIGHT ALIVE, BECKY SHAW (Dobama); LES MISERABLES, MARY POPPINS, THE WIZ, ASSASSINS, (Near West Theatre); REALLY REALLY, YOUNG FRANKENSTEIN and SEMINAR (Beck Center); and AIDA, SWEENEY TODD and HAIRSPRAY, among many others (M.A.D. Factory). Cameron is currently an MFA candidate at Goddard College, and acts as Technical Director and Instructor for Cleveland State University's Department of Theatre and Dance.

INDA BLATCH-GEIB (Costume Designer)

Inda Blatch-Geib's work as a costume and production designer for over 1,000 theatrical, commercial, and film releases has spanned 35 years and crossed 4 continents. Production and Costume Design has included commercials for Footlocker, The West Virginia Lottery's national award-winning campaigns, The Ohio Lottery, Microsoft, Under Armor, McDonalds, TroyBuilt, and The Original Mattress Factory as well as the Cleveland Cavaliers' 1970's and 1980's themed videos, national spots for the team, and design for on court half-time shows including their mascot shield design and pyrotechnic sword. Live performance and festival design include Machine Gun Kelly's US and European Tours as well as ESTFEST and Wolstein Arena productions. Specialty projects include microphone stand designs for MGK and Bear. Print designs have included set styling for Harper's Bazaar UK Scarlett Johansson cover and spread as well as catalogue set styling for Foundations and Kilgore Trout. Additionally, Ms. Blatch-Geib's designs have been showcased in exhibits at The Smithsonian Institute with

film projects including Ohio Art Direction of The Signal starring Laurence Fishburne and Production and Costume Design of the soon to be released The Con. Theatrical Design includes Production & Costume Design for the special off- Broadway Production of Kris Kringle, The Musical, Costume Design for the Cleveland Play House production of Native Gardens, as well as multiple productions for the Colombian National Opera. Music Video Production and Costume Design includes Machine Gun Kelly's Alpha Omega and Let You Go releases. Locally, Inda is the 2021/2022 Resident Designer for Karamu House, Cleveland Public Theatre, Magical Theatre Company, and Cleveland Institute of Music.

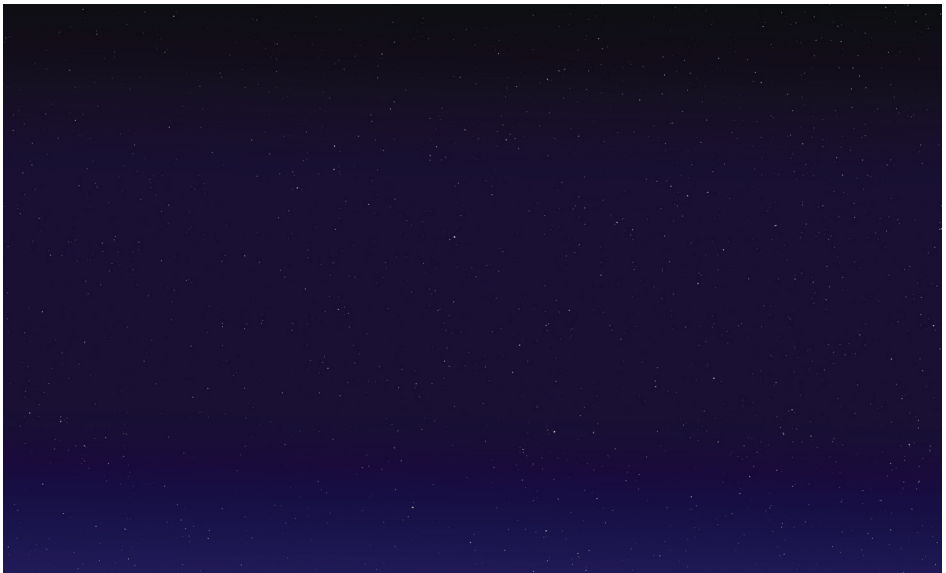
TIM CHRISMAN (Lighting/Projection Designer) is elated to be designing again for Beck Center's Studio Theater! Tim was recently awarded Best Lighting Design of 2021 by the Cleveland Critics Circle for his work on THE EXONERATED. He is also excited and proud to have the opportunity to debut his first projection design. Tim wishes to thank his friends and family for their unwavering love and support.

ANGIE HAYES (Sound Designer) has designed and mixed sound for productions at many area theaters, colleges, and high schools. She has also recorded and sound designed

for several podcasts, including SIDEWALK, MUNCHEN, MN, and a radio play series for The Endangered Species Theatre Project of Frederick, MD. She has a Bachelor Degree in Music from the University of Wisconsin Oshkosh, with an emphasis in Recording Technology and Music Business.

BETTY PITCHER (Wardrobe Supervisor) is the Wardrobe Manager and Costume Rental Coordinator at the Beck Center. Her Beck Center credits include: MATILDA, SHREK, GYPSY, LITTLE MERMAID, TRIALS OF ROBIN HOOD, SEUSSICAL, CINDER-ELLA, LARAMIE PROJECT, ALL GREEK TO ME, SNOW WHITE'S ADVENTURES, and SCHOOL HOUSE ROCK LIVE. She has been a costume designer for more than 12 years and has created custom costume pieces for Beck Center for the Arts, Player's Guild, Chagrin Valley Little Theatre and North Canton Playhouse. Betty would like to thank her son, Jeremy for "volunteering" her to "help" all those years ago. Betty's Costume Creations & Rentals (BCCR)

**Members of Actors' Equity Association, the Union of Actors and Stage Managers*



Savoir-Faire Magazine

**Highlighting Small & Minority
Owned Businesses
Since 1997**



Daphney Grier,
Editor & Publisher

www.sfmag.biz
daphney@sfmag.biz
800-581-5950

We are specialists in
Affordable Diversity
Marketing & Advertising

*Congratulations to the Beck Center for another
wonderful season!*

Beck Center Annual Contributors

We gratefully acknowledge the support of the following individuals, corporations, foundations, governments, and organizations which have made contributions to our Annual Fund to Beck Center for the Arts in support of our mission to inspire, enrich, and transform through dynamic arts experiences. From our Beck family to yours, thank you!

The current listing includes donors of \$100 or more from December 2020 through March 14, 2022. We greatly appreciate all of our supporters and apologize for any errors or omissions. For any corrections or more information on the benefits of these giving circles, please contact our Director of Development, **Megan DeFranco, at mdefranco@beckcenter.org 216.521.2540 x18**

INDIVIDUALS, FOUNDATIONS, CORPORATIONS AND ORGANIZATIONS

LEADERSHIP CIRCLE (\$10,000 and above)

Dale and Cindy Brogan
Milan G. Busta*
The Cleveland Foundation
Community West Foundation
Cuyahoga Arts and Culture
Cuyahoga County
The William R. Daniels Memorial Fund
Dorn Family Foundation
First Federal Lakewood
Joan Alice Ford
The Char and Chuck Fowler Family
Foundation
Chann Fowler-Spellman and Ed
Spellman
The George Gund Foundation
Bonnie J. Hagerman
Kulas Foundation
Bill and Joyce Litzler
The Vida C. Logan Fund
Ryan and Alysia McKean
William Minnich
John P. Murphy Foundation
The Nord Family Foundation
Ohio Arts Council
Lee and Maria Parks
The Reinberger Foundation
John A. Reynolds
Sandy Sauder
Vivian H. Schulze Trust
Small Business Association
Jan Soeder*
State of Ohio
Three Arches Foundation
Turner Construction Company

FOUNDER'S CIRCLE (\$5,000 to \$9,999)

Rachel Abernethy
The George W. Codrington Charitable
Foundation
FGI Foundation
Harry F. Fox and Emma R. Fox
Charitable Foundation
William Garrison and Mary Jo Mlakar
Jackson Lewis P.C.
Terry and Dona Jones
Betty Kemper
Listen Technologies

Nancy and John McMillan
Dave and Traci Nolan
Michael and Carol O'Brien
Pat and Jim Oliver
Brad and Margaret Richmond
Kevin Smith and Cassandra Simon
Stephanie Spahr
Ellen Todia and David Matthiesen
Landon Tracey and Corey Donovan
Tracey
Laird and Jennifer Wynn

BENEFACTOR'S CIRCLE (\$2,500 to \$4,999)

Anonymous (2)
Carol Barnak
Ben Berns
Curt Brosky and Betty Tereck
Nancy and Jack Calcott
The Cyrus Eaton Foundation
Syma Dar
Development Services Agency
Eaton Charitable Fund
FBC Chemical Corp.
Richard and Judy Fox
Gregory Good and Adrienne Embery-
Good
Charles and Marie Grossman
Chuck and Nancy Gustafson
Jim Hayes and Madeline Muser Hayes
Doug Hoffman and Ron Stach
Emily Jett and Mark Getsay
Andrew L. Killian
Nancy C. Krueger
Lakewood and Rocky River Rotary
Foundation
The Laub Foundation
Sean Malloy
Nordson Corporation Foundation
Barbara and Bob Paynter
Protiviti Inc.
Robert Hartshorn Studio & Gallery
Karen Rockhold
Sherwin-Williams Company
Bill Spence
Mr. and Mrs. John Steinbrunner
Jean Stell
Thomas J. Coltman Foundation
Turning Point Wealth
Vedda Printing

CHAIRMAN'S CIRCLE (\$1,000 TO \$2,499)

Anonymous
State Senator Nickie Antonio and Jean
Kosmac
Sean and Erin Arbezniak
Mark Bartlett
Kathleen A. Baskoff and Steven
Schwarz
Gregory and Susan Bergmann
The Bonne Bell Family Foundation
Michael R. and Leslie Brown
Sarah J. Buck
Eddie-Lou and Lew Bush
Mary Beth Campbell and Mark Sistek
Jane Christyson and Robert Mahoney
Ray and Dawn Cushing
Michael and Amy Daso
Steve DeJohn
Mary Ann and Dave Dombrowiak
The Dominion Energy Charitable
Foundation
Joel and Bonnie Egertson
Cindy and Tom Einhouse
Jenny and Ralph Febbo
The Foell Family
Cindy and Tim Friedmann
Michael Fulton
Thomas Gehlbach and Warren
Stauffer
The Giant Eagle Foundation
Gary and Frances Floriano Goins
Goodman Real Estate Services Group,
LLC.
Kathy and Ken Haber
Barbara and Bob Hall
Harold L. and Patricia D. Williams
Charitable Fund
Henry Hilow and Judy Ghazoul-Hilow
Karl Hoeffler
John and Mary Kay Jefferson
David and Cheryl Jerome
Gary and Rose Juhnke
Kim and Nora Katzenberger
KeyBank Foundation
Edward Knotek
Gerit and Peg Kuechle
Lakewood Arts Festival
Lakewood-Rocky River Sunrise Rotary
Club

Kathleen Lawther
Jay and Sally Magee
Kathleen McGorray and Bob Soffer
Medical Mutual
Melt Bar & Grilled
Mickey and Larry Mencin
Stephen Mitchell Brown Photography
The Music and Drama Club
David and Inez Myers Foundation
Larry Nance Jr.
Debbie L. Neale
Rebecca Niemiec
Dr. and Mrs. Peter Nintcheff
Deborah and John O'Neill
Anne and Jack Palomaki
Jim and Barbara Pearce
Amy and Tom Petrus
Mike and Lori Petti
Jeff and Nora Poore
John and Norine Prim
Renaissance Charitable Foundation,
Inc.
Jeffrey and Susan Ritter
Robert Half Recruiters & Employment
Agency
Patrick and Angela Rollins
Patty and Jim Ryan
Richard and Mary Sanders
Laura and David Sangree
William and Susan Schmitt
Galen Leigh Schuerlein, Esq.
Astri Seidenfeld
The Walter V & Judith L Shipley Family
Foundation
Brian Sinchak
Donna Rae and Edward Smith
Ann Spence
Sweet Designs
Theater Alliance of Beck Center
Kenneth and Martha Taylor
The Wonderful Company Foundation
TS Homan Arts Fund
Gina Vernaci and Bill Hilyard
Maureen and Raymond Votypka
Thomas Wagner and Malinda Smyth
Jonathan Ward
Joe and Kathy Ward
Mary C. Warren
Margaret Weitzel
Libby and Christopher White
Michael Wightman
Dave Willett and Steve Meka
Women's Board of Beck Center
Jason and Gretchen Woods
Judith and Walter Wright
Janice Young
Genny Zarnick

PRESIDENT'S CIRCLE
(\$500 TO \$999)

Thomas and Joann Adler Family

Philanthropic Fund
Joel and Teresa Andreani
Anonymous (2)
Elise and Steve Auvil
The Bay Foundation
Fred and Laura Bidwell
Georgia A. Burley
DeDe and Bruce Burton
Robert and Mary Calsin
Janice and Jack Campbell
Douglas Cass
Cetera Advisor Networks
Charities Aid Foundation of America
Caroline Chesebrough
Mary Coe
Beverly Coen
Craig and Jan Cook
Rosemary Corcoran
Megan DeFranco
Sherrie Desmond
Equitable Advisors
Sara and David Fagnilli
Jon and Mary Fancher
Larry and Rosemary Faulhaber
A.J. Cianflocco and Mary Anne Garvey
Bill and Jayne Gaydos
Bill Gorton and Susie Blackburn
Gradient Think Tank
John and Carol Guska
Joan and Tom Hartshorne
Hydro-Chem Corporation
Jewish Federation of Cleveland
Karen Skunta & Company
James Keily
S.C. Kirkland
Carol Klar
Mickey and Patty Krivosh
Latham Family
Matt and Angela Lay
Steven M. Licciardi
Madison Development Co. LLC
Tony Marini
Marcello and Shelley Mellino
Jack and Lois Mowry
Samantha Obermeyer
Patrick and Sharon Perotti
Peggy and Dominic Perry
Timothy and Jen Powers
Tom and Helen Rathburn
Eugene and Marge Ruminski
Martin Saltzman
Parvathi and Seth Shalov
Michael and Michelle Smith
Art and Sherri Stehlik
Timothy and Debra Swartz
Martin and Laura Uhle
Sara and Jason Verderber
Kristine Wellman
Benjamin and Melanie Whiting
Bill and Ann Zabkar

DIRECTOR'S CIRCLE
(\$250-\$499)

Dena and Daniel Adler
Cathy and John Aldrich
Anonymous
Mark J. and Bonnie O. App
M. Karen Aylward
Robert Bade and Linda Hurley
George and Sandra Berendt
Ruth B. Bertrand
Bill and Janet Bird
Amy Holtshouse Brennan
Marianne and Jack Byrne
Sally Carr
Deborah Clare Laub
Cleveland Indians
Mike and Jacque Coyne
Elizabeth Cross
Carol Crowe
David Delgado and Linda Springer
Jason and Kristina Edleman
Judy and Steve Fesko
Scott and Kris Fisher
Colleen Flennoy
Mary Eileen Fogarty
Pam Gallagher
Eileen and John Gallagher
Gregory Gardner
Franca Garofalo
David and Sarah Gedeon
Mr. and Mrs. Barry Glazer
John W. Hollopetre
Gail Jackson
Andrew Janick
Mary and Chris Kay
Jack and Kim Kellogg
Stanley W. Kline
Barb and Charlie Koch
Alice Lang
Mark and Jo Anne Larkman
Lynn and Mary Lazzaro
Dr. Dinah Lee
Kathleen Legg
Mary and Brian Marita
James and Ellen Marsey
Jay Marshall
Richard and Karen Middaugh
Pat and Tina Miller
Michael and Peggi Mizen
Shawn Monaghan and Gregory
Plotnikoff
Thomas Murphy
Larry and Shelly Neapolitan
Rick and Jane Nash
James Oliver
Glending Olson and Hester Lewellen
Eileen Pappalardo
Eileen Paskert
Sue Pedro
Gloria Plevin
Judy and John Pyke

Raising Cane's
 Melissa Richmond
 Mary Roach
 Linda Rocchi
 Ron Rydarowicz
 Dorothy Salem
 Lori Samuels
 Dave Turner and Rebecca Shaw
 LuAnn Shuster and Joe Tucker
 Mary Lynne and David Slife
 Arthur E. Spector
 Kathleen J. St. John
 Sally Staley
 Timothy C. Stevens
 Elizabeth Stirling and Tom Millward
 James and Marilyn Taylor
 Arthur L. Thomas
 Karen Tolhurst
 University Tees
 Jim Vine
 Nelson Wagner
 Larry and Elizabeth Weiss
 Robert C. and Emily C. Williams
 Marianne Wills
 Thomas Wrabel

**indicates deceased*

WITH SPECIAL THANKS

Cuyahoga County residents through
 Cuyahoga Arts and Culture
 Ohio Arts Council

HONORARY GIFTS

Beck Center for the Arts would like to
 thank those who have given gifts
 in honor of the following individuals:

Beck Center's Youth Theater
 program is supported by The Mary
 Ward Scholarship Fund.

Abdollahian, Kay, Schwede, Gallagher
 Clan
 Randy and Deena Baenen
 Rita Barniak
 Eileen, Olivia and Cameron Brady
 Doug Cooper
 Helen Corns
 Creative Arts Therapy
 Syma Dar
 Cindy Einhouse
 Betsy Feierabend
 Aimee Guzowski
 Jack Lazzaro
 Ingrid Matera
 Anne McEvoy
 Audrey McNulty
 Mickey Mencin
 Iris November
 Mike and Carol O'Brien
 Garretson Oester
 M. Patricia Oliver
 Bella Ramirez
 John Reynolds
 Lynda Sackett
 Benjamin L Sakai
 Wally and Joyce Senney
 Bill Spence
 Scott Spence
 Art Stehlik
 Melanie Szucs
 Thomas Wagner
 The Watts Family
 Matt and Sarah Winters
 Jack and Eva Wynn

MEMORIAL GIFTS

Beck Center for the Arts would like to
 thank those who have given gifts in
 memory of the following individuals:

The Beck Center Dance Program
 is supported by the Lynda
 Sackett Endowment for Dance
 Education and the James Kurtz
 Memorial Endowment Fund.

Sharyn Bailin
 Joseph Bandille
 Emily Baskoff
 Aaron Boron
 Judith Buerkel
 Lew Bush
 Walt Campbell, Mary Campbell Nir, &
 Margaret Campbell
 Tim Carpenter
 Marilyn Helen Clough
 Lee Ann Curry
 Rosemarie Feighan DeJohn
 Nick Amster Fishelson
 Virginia Fisher
 Robert and JoAnne Hahn
 Thomas Oak Hardington
 William J. Harper
 Maurice L. Heller
 Mark and Lowell Holloway
 Barbara Hunter
 John V. Jackson II
 Faith Killius
 Douglas C. Kline
 Eleanor F. Kushnick
 Clara Lacey
 Hester Lewellen
 Leo Lightner
 George Nakley
 Barbara Nussbaum King
 Raymond Reali
 Donald F. Santa-Emma
 Nancy A. Score
 Dorothy Silver
 Marie Sterbenz
 Barbara Swearingen
 Lindsay Taylor
 Dave Tolhurst
 Vilma Vargo

The Community West
 Foundation is a proud supporter
 of Creative Arts Therapies at
 Beck Center for the Arts.



PROFESSIONAL FLARE FOR THOSE 
 **REVOLTING CHILDREN!**

BRILLIANT COSTUMES FOR

AND EVERYTHING ELSE!

Costume rentals from the Beck Center production
 are available now. We have a growing inventory
 of rental pieces to suit your needs, and can even
 take custom orders for that special something!

 **BETTY'S COSTUME CREATIONS & RENTALS**
 Northeast, Ohio
 www.bettypitcher.com
 330.329.3505
 bettyscostumecreations@gmail



Inline
TECHNOLOGY SERVICES

CommuniKate™ Phones/VoIP

A phone system for your Non-Profit or Small Business with all the bells and whistles you need at a price you can afford.

As low as \$2.95 per line plus minutes!

Email carlton@inlinetechnology.com for more information.

Custom Software | Managed IT Services | Unified Communication
216-221-4600 | www.inlinetechnology.com



**Ohio Citizens
for the Arts**

**Championing arts and culture in the
Buckeye State through advocacy,
education, and engagement.**

#OhioArtsStrong

www.ohiocitizensforthearts.org

Creating Our Future Campaign Contributors

We gratefully acknowledge the support of the following individuals, corporations, foundations, government grants and organizations that have contributed \$1,000 or more to Creating Our Future: The Campaign for Beck Center. For information on naming opportunities and touring our renovations, please contact our Director of Development, Megan DeFranco, at mdefranco@beckcenter.org. As we look to finish Creating Our Future, please know that we also accept gifts of stock and securities. Please visit beckcenter.org/give for more information and make a lasting impact for families in our community. **AS OF MARCH 14**

\$1,000,000+

Joyce and Wally Senney

Pam and Tom Smith
Michael and Wendy Summers
Women's Board of Beck Center

Dependable Painting Company
Eaton Charitable Fund
Cindy and Tom Einhouse
David Greenspan and Mary
Kim Elkins

\$500,000 - \$999,999

Chann Fowler-Spellman and Ed
Spellman

\$25,000 - \$49,999

Anonymous
Joel and Bonnie Egertson
Charlotte and Charles Fowler

Thomas and Mary Ellen Fraser
Cindy and Tim Friedmann
Bill Garrison and Mary Jo
Mlakar

\$100,000 - \$499,999

The Callahan Foundation
The Char and Chuck Fowler
Family Foundation
Kathy and Ken Haber
Bonnie J. Hagerman
Bill and Joyce Litzler
Oatey Foundation
John A. Reynolds
Sandy Sauder
William and Susan Schmitt
The Kelvin and Eleanor Smith
Foundation
State of Ohio
Ellen Todia and David
Matthiesen

Richard and Judy Fox
The William O and Gertrude
Lewis Frohring Foundation
The Giant Eagle Foundation
Charles and Marie Grossman
Terry and Dona Jones
Gerrit and Peg Kuechle
Dennis and Kim Lansdowne
The Nord Family Foundation
Tim Penton and Jay Gardner
Brad and Margaret Richmond
Lynda Sackett and Bill Knoble*
Kevin Sauder
The Kent H. Smith Charitable
Trust
Margaret Weitzel

Charles and Nancy Gustafson
Doug Hoffman and Ron Stach
Elda C. Krach
Lakewood and Rocky River
Rotary Foundation
Sean Malloy
Mickey and Larry Mencin
Pat and Jim Oliver
Anne and Jack Palomaki
Anthony and Mary Rego
Laura and David Sangree
Carolyn P. Seelbach*
Gina Vernaci and Bill Hilyard
Thomas Wagner and Malinda
Smyth
Mary C. Warren
Laird and Jennifer Wynn

\$50,000 - \$99,999

Dale and Cindy Brogan
The George W. Codrington
Charitable Foundation
Doug and Karen* Cooper
David Deming
Dorn Family Foundation
Mary and Tom Holland
Michael and Carol O'Brien
Lee and Maria Parks

\$10,000 - \$24,999

Anonymous (3)
Barber & Hoffman, Inc.
Bialosky & Partners Architects
Curt Brosky and Betty Tereck
Commercial Interior Resources,
Inc.
Elaine and David* Cook
Mary Anne and Byron
Crampton

\$5,000 - \$9,999

Dena and Daniel Adler
American Endowment
Foundation
Anonymous
Mark and Cynthia Bacon
Carol Barnak
Ruth B. Bertrand
The Bonne Bell Family

Foundation
Michael R. and Leslie Brown
Monica Brown
Georgia A. Burley
Nancy and Jack Calcott
Syma Dar
Michael and Amy Daso
The Dominion Energy
Charitable Foundation
David and Virginia Estrop
Larry and Rosemary Faulhaber
Pam Gallagher
Dorothy Ginley-Bahm
Kim and Nora Katzenberger
Andrew L. Killian
John and Judy Kropf
Lakewood-Rocky River Sunrise
Rotary Club
William LaPlace
Carol Latham
Terrence and Karen McHugh
Ryan and Alysia McKean
Nancy and John McMillan
Patricia and George Miller
Rebecca Niemiec
Barbara and Bob Paynter
Jeff and Nora Poore
Donna Rae and Edward Smith
Art and Sherri Stehlik
Theater Alliance of Beck Center
Richard and Gail Tanner
Landon Tracey and Corey
Donovan Tracey
Turner Construction Company

\$1,000 - \$4,999

Rachel Abernethy
Adobe Systems Incorporated
Joel and Teresa Andreani
Anonymous
Brenda and George Anthony
State Senator Nickie Antonio
and Jean Kosmac
AXA Advisors LLC
Sam and Chrysa Babic
Kathleen A. Baskoff and Steven
Schwarz

Kathryn Berkshire
Liz and David Breudigam
Robert and Mary Calsin
Lynda Carter
Charities Aid Foundation of
America
Colleen Clark-Sutton and Tom
Sutton
Community West Foundation
Hal and Connie* Cooper
Rosemary and Richard*
Corcoran
Tim and Tracy Coughlin
Joanna and Marc D'Agostino
Mary Beth and Jeff DeClerck
Tom and Tricia Dent
Sherrie Desmond
Gregory Good and Adrienne
Embery-Good
Victor and Janet Erml
Jon and Mary Fancher
Jenny and Ralph Febbo
FGI Foundation
The Gagen Family
Henry Hilow and Judy Ghazoul-
Hilow
Joe and Peggy Gibbons
Kathy Goepfert
William Gorton and Susie
Blackburn
Gerald and Pennie Gray
Barbara Hueter and Andrew
Zajac
Hyland Software, Inc.
Impel Creative, Inc.
John and Mary Kay Jefferson
Emily Jett and Mark Getsay
Robert and Betty Karras
Mary and Chris Kay
KeyBank Foundation
Cathy and Peter Kuhn
Richard and Laura Little
Cindy and Jake Marx
Freida McGee and Michael
Wochna
Kathleen McGorray and Bob
Soffer
Dave and Val Mechenbier

Marcello and Shelley Mellino
Carol and Dale Miller
Colin and Sarah Moeller
Lauren Mueller
John P. Murphy Foundation
Dr. and Mrs. Peter Nintcheff
John O'Brien
Deborah and John O'Neill
Naomi Opdycke
Donna and George Puskas
John J. Ritchey
Jeffrey and Susan Ritter
Brian Sapola and Jessica
Lovich-Sapola
Sharon and Steve Schuldt
The Herb Score Family
Sherwin-Williams Company
Brian Sinchak and Lakewood
Catholic Academy
Victoria and Daniel Smigelski
Jan Soeder*
Bill Spence
Ann Spence
Linda Springer
The Staub Family
Arthur L. Thomas
Dr. Timothy Kantz and Megan
Torok
Terry and Candace Vincent
Kathy and Gregg Wasilko
Karen and Jeffrey Weber
Dick West
Karen Youngstrom

**indicates deceased*

It's time for a new identity.

**One that tells the story of creativity
in Ohio and illustrates it.**



Expression is an essential need.

**By better illustrating our story,
we can better help you express yours.**

Complete the story at oac.ohio.gov/identity.

30 EAST BROAD STREET, 33RD FLOOR, COLUMBUS, OHIO 43215-3414 | 614-466-2613

OAC.OHIO.GOV | @OHIOARTSCOUNCIL | #ARTSOHIO



SPOTLIGHT 2022

imagine • create • inspire

FRIDAY, JULY 22, 2022

Beck Center's Fundraising Gala

Benefitting our mission to inspire,
enrich, and transform lives through
dynamic arts experiences



For opportunities to be part of making
Spotlight sparkle, contact Jay'da Hall:
jhall@beckcenter.org

*gordon
green.*