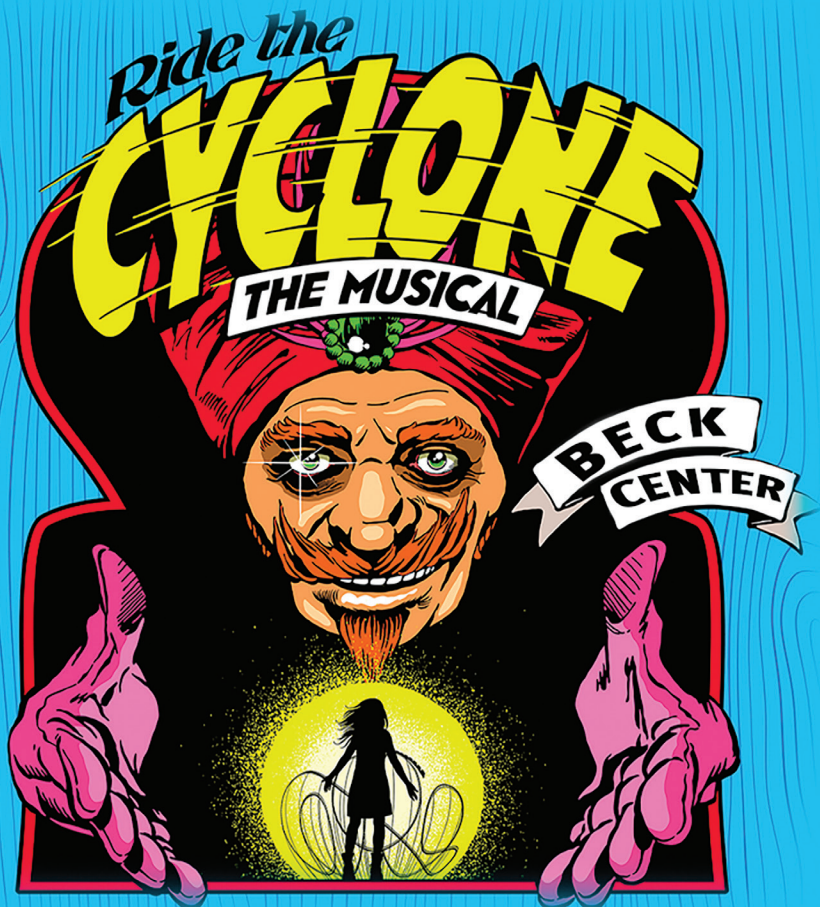


BECK CENTER FOR THE ARTS  
PROFESSIONAL THEATER SEASON | 2023-2024  
REGIONAL PREMIERE



FEB 9 - 25, 2024  
SENNEY THEATER

COLLABORATION WITH BALDWIN WALLACE UNIVERSITY MUSIC THEATRE PROGRAM  
PRESENTED BY SPECIAL ARRANGEMENT WITH BROADWAY LICENSING, LLC. [WWW.BROADWAYLICENSING.COM](http://WWW.BROADWAYLICENSING.COM)

MUSIC, BOOK & LYRICS  
**JACOB RICHMOND AND BROOKE MAXWELL**  
ORIGINALLY PRODUCED BY  
**KEVIN MCCOLLUM AND MORRIS BERCHARD**  
ADDITIONAL MATERIALS BY **ALAN SCHMUCKLER**  
DIRECTED BY **VICTORIA BUSSERT**  
MUSIC DIRECTION BY **MATTHEW WEBB**  
CHOREOGRAPHY BY **LAUREN TIDMORE MAROUSEK**

**BECKCENTER.ORG | 216.521.2540**

**90<sup>th</sup>** Beck  
Center  
— FOR THE —  
Arts  
ANNIVERSARY

PLAYBILLS COSTS \$1.44 EACH TO PRINT



**theater**

**visual arts**



**music**

**dance**



**creative  
arts therapies**

**BE A PART  
OF THE  
ARTS!**



**Register today for  
Summer Camps  
and Classes!**



**BECKCENTER.ORG | 216.521.2540**

# WELCOME TO BECK CENTER FOR THE ARTS!

## BOARD OF DIRECTORS

Ellen Todia <i>Chair</i>	Michael Brown	Ryan McKean
Mike O'Brien <i>Treasurer</i>	Jane Christyson	Pat Miller
Kathleen McGorray <i>Secretary</i>	Rosemary E. Corcoran	M. Patricia Oliver
Lucinda B. Einhouse* <i>President and CEO</i>	Syma Dar	Barbara Paynter
	Michael Daso	Jeffery Poore
	Chann Fowler-Spellman	John A. Reynolds
	Richard Fox	Bradford Richmond, M.D.
	Allison Tanner Gill	Sandra Sauder
	Frances Floriano Goins	Brian Sinchak
	Kathy Haber	Teresa Struble
	Emily Jett	Corey Donovan Tracey
	Midori Lebron	Margaret G. Weitzel
	Angie Kazi	
	Sean Malloy	

\*Indicates paid staff

## ALUMNI HALL OF FAME

Michael Chernus
Jack Lee*
Mark O'Donnell*
Rory O'Malley
Austin Pendleton
Marge Redmond*
Matthew Rego
Michael Rego
Jack Riley*
Alice Ripley
Martin Savidge
Hank Unger

\*Indicates deceased

## HONORARY DIRECTORS

Deborah A. Bridwell, Ph.D.	David C. Estrop, Ph.D.	Ronald Waldheger	<b>Honorary – Ex-Officio</b>
Cynthia Brogan	Douglas Hoffman	Thomas C. Wagner	Marianne Monahan
Nancy B. Calcott	Terry L. Jones		<i>President Beck</i>
Joel Egertson	William J. Schmitt		<i>Women's Board</i>

## MANAGEMENT TEAM

Lucinda B. Einhouse.....	President and Chief Executive Officer
Edward P. Gallagher, MT-BC.....	Vice President for Education
Larry J. Goodpaster.....	Vice President for Operations
Scott Spence.....	Artistic Director
Kristen Levy.....	Director of Development
Julie Gilliland.....	Director of Marketing
Kelly Martin.....	Director of Finance

## ADMINISTRATIVE AND PRODUCTION STAFF

Tracy Ammon, MT-BC.....	Associate Director of Creative Arts Therapies
Charles Battaglia.....	Associate Director of Development
Sarah Clare.....	Associate Director, Theater Education
Joy DeMarco.....	Education Assistant
Mark DeVol.....	Technical Director
Kristina Edleman.....	Customer Experience Manager
Melinda Glass, MT-BC.....	Music Therapist
Jay'da Hall.....	Annual Fund Manager
Kelsey Heichel.....	Community Engagement Manager
Ann Huebner.....	Registration Support Manager
Tim Keehn.....	Facilities Director
Riley Candow, Glenn Dobry, Andrew Flinn & Mike Jones.....	Facilities Technicians
Patsy Coffey Kline.....	Visual Communications Designer
Bryce Evan Lewis.....	Communications Specialist
Melinda Placko.....	Associate Director of Visual Arts & Music
Simon Sedmak.....	Assistant Technical Director
Michael Simile, MT-BC.....	Music Therapist
Melanie Szucs.....	Associate Director, Dance Education
Jake Tisdale.....	Accounting Associate
Rennie Tisdale.....	Customer Service Manager
Justine Horning, Devin O'Bryan, Spencer Palko, Ivy Rook, T.J. Rovito & Owen Seckers.....	Customer Service Associates

Beck Center for the Arts is proud to be a part of Northeast Ohio's professional theater landscape. Like our colleagues Playhouse Square, Cleveland Play House, Dobama Theatre, and Great Lakes Theater, Beck Center has a letter of agreement with Actors' Equity Association. We hire professional actors from the Northeast Ohio region, including members of Actors' Equity. Specifically, we are a Small Professional Theater (SPT) based on the number of seats, number of our performances, and the maximum weekly hours of work we provide to actors. We are also a producing theater. We produce every show on our stages. Meaning we choose the play, cast and rehearse it, build the sets, props, and costumes, direct and perform the music, and design lights and sound, utilizing regional resources and talent, all for you, our valued patron of the arts. Thank you for supporting live theater!

## HOUSE INFORMATION

**ACCESSIBILITY:** Wheelchair ramps, an elevator, and accessible restrooms make Beck Center accommodating to patrons. **Theatergoers in wheelchairs should request seats in Row J.**

**RESTROOMS:** Can be found on the ground floor outside the Senney Theater, the garden court at the west end of the Galleria, and on the second floor just outside the elevator.

**SMOKING:** Beck Center is a non-smoking facility. Smoking is permitted outdoors away from the entrances.

**PARKING:** Convenient, free, on-site parking.

**FIRE:** Exits indicated by red lights are the shortest route to safety. In case of an emergency, please walk to the nearest exit.

**CAMERAS AND RECORDING DEVICES:** Copyrights strictly prohibit the photographing, audio or video recording of all productions. Cameras and cell phones may be confiscated.

**CELL PHONES:** Please turn off all cell phones and audible devices as the sound and screen light are distracting to the audience and especially the cast. Texting is not permitted during performances.

**LARGE PRINT PLAYBILLS:** Available upon request at our Customer Service desk.

**VIEW PLAYBILLS ONLINE:** Playbills costs \$1.44 each to print. View all our playbills online at [beckcenter.org](http://beckcenter.org)

**RECYCLING:** Beck Center believes in recycling! If you decide to discard your playbill, bottles or cans, please do so in the designated recycling receptacles.

**LOST & FOUND:** Customer Service maintains a Lost & Found service as a courtesy to our patrons. Please report any misplaced items, lost or found, immediately.

**CUSTOMER SERVICE HOURS:** 9 a.m. to 8 p.m. Monday through Thursday; 9 a.m. to 5 p.m. Friday and Saturday; 12 p.m. to 4 p.m. Sunday; and open through intermission on performance dates. For ticket information visit [beckcenter.org](http://beckcenter.org) or call 216.521.2540.

**FOLLOW US:**



**ASSISTIVE LISTENING DEVICES (ALDS):** Amplify and clarify sound by cutting down or eliminating ambient noise. Assistive Listening Systems are installed in both the Senney Theater and the Studio Theater and were completely overhauled during the summer of 2021 to improve sound quality and performance. Headsets may be used at any seat and, with the upgrade, induction neck loops are also now available for patrons who use hearing aids and cochlear implants with a “T” switch. Ask your audiologist whether your hearing aid or cochlear implant has a “T” switch (telecoil) and how to use it with an assistive listening headset.

**WHO CAN USE AN ASSISTIVE LISTENING DEVICE?** Everyone! While induction neck-loops are only compatible with hearing aids and cochlear implants that include a “T” switch, the ear speaker can be used by anyone who wants a little volume boost.

**WILL THE PATRONS NEXT TO ME BE DISTURBED BY THE ASSISTIVE LISTENING DEVICE?** ALDs are designed to deliver sound directly to an individual and work using specific reserved radio frequencies so as to not conflict with any other devices or equipment in use by the theater or our patrons. In addition, the ear speakers and the neck loops are designed to be as inconspicuous as possible. It’s likely no one will even know you’re using one.

**ARE ASSISTIVE LISTENING DEVICES AVAILABLE FOR EVERY SHOW AND EVENT AT BECK CENTER?** YES! As long as the event is held inside the Senney or Studio Theater.

**DO I NEED TO REQUEST AN ASSISTIVE LISTENING DEVICE IN ADVANCE?** You do not need to request an ALD in advance of arriving at the theater and an ALD can be requested at any time during an event. ALDs are distributed on a first-come-first-served basis free of charge. You may request your ALD at the Customer Service desk in the Beck Center lobby.

**IS THERE A COST FOR USING AN ASSISTIVE LISTENING DEVICE?** No, ALDs are distributed free of charge on a first-come-first-served basis.

**DO I NEED TO SIT IN A SPECIFIC PLACE TO USE AN ASSISTIVE LISTENING DEVICE?** No, all of our ALDs will work from any seat in any of our three theaters.

**DO YOU CLEAN YOUR ASSISTIVE LISTENING DEVICES?** Yes, we follow the manufactures maintenance recommendations and use antimicrobial wipes to clean all earpieces and neckloops when they are returned before placing them back into storage.

**DO I NEED TO ARRIVE EARLY TO OBTAIN AN ASSISTIVE LISTENING DEVICE?** While obtaining an ALD will not take very long, we strongly recommend that all patrons arrive AT LEAST 20 minutes before the performance to allow time to park, get to the theater, and find your seat.

**I HAVE A HEARING AID OR COCHLEAR IMPLANT, WILL AN ASSISTIVE LISTENING DEVICE WORK FOR ME?** Induction neckloops are also now available for patrons who use hearing aids and cochlear implants with a “T” switch. Ask your audiologist whether your hearing aid or cochlear implant has a “T” switch (telecoil) and how to use it with an assistive listening headset. Patrons find this to be the best way to use the ALD’s.

**I HAVE SEVERE HEARING LOSS, WILL AN ASSISTIVE LISTENING DEVICE WORK FOR ME?** ALDs will generally help anyone who can understand normal conversation either without aid or with a hearing aid. For more severe hearing loss, an ALD alone may not be enough.

**QUESTIONS?** Please contact customer services at 216.521.2540 or email [boxoffice@beckcenter.org](mailto:boxoffice@beckcenter.org)

COLLABORATION WITH BALDWIN WALLACE UNIVERSITY MUSIC THEATRE PROGRAM

# Ride the **CYCLONE** THE MUSICAL

## DOUBLE CAST DATES

**MAVERICK CAST:** 2/8, 2/10, 2/15, 2/17, 2/21, 2/23, 2/25

**RAPTOR CAST:** 2/9, 2/11, 2/14, 2/16, 2/18, 2/22, 2/24

MUSIC, BOOK & LYRICS  
JACOB RICHMOND AND  
BROOKE MAXWELL

ORIGINALLY PRODUCED BY  
KEVIN MCCOLLUM AND  
MORRIS BERCHARD

ADDITIONAL MATERIALS BY  
ALAN SCHMUCKLER

DIRECTED BY  
VICTORIA BUSSERT +

MUSIC DIRECTION BY  
MATTHEW WEBB

CHOREOGRAPHY BY  
LAUREN TIDMORE  
MAROUSEK

PRODUCTION STAGE MANAGER /  
PROJECTION DESIGNER  
JACK-ANTHONY INA\*

COSTUME DESIGNER  
TESIA BENSON

SOUND DESIGNER  
CARLTON GUC

SCENIC/LIGHTING DESIGNER  
TRAD A BURNS

ASSISTANT LIGHTING /  
SCENIC DESIGNER  
EMMA BAYLESS

ASSISTANT COSTUME  
DESIGNER  
GRACIE FRAZIER

**SPECIAL THANKS:** Jeremy Alden, Laura Welsh Berg, Bryan Bowser, Melanie Boeman, Sean Cercone, Keaton Miller, Stephanie Orr, Tom and Helen Rathburn, John Rieling, Simeon Schmitt, Susan Van Vorst and Nick Wilders

**RUN TIME IS APPROXIMATELY 90 MINUTES, NO INTERMISSION**

PRESENTED BY SPECIAL ARRANGEMENT WITH BROADWAY LICENSING, LLC. [WWW.BROADWAYLICENSING.COM](http://WWW.BROADWAYLICENSING.COM)  
**RECOMMENDED FOR AGES 12 AND OLDER DUE TO SUBJECT MATTER AND ADULT LANGUAGE**

THE VIDEOTAPING OR OTHER VIDEO OR AUDIO RECORDING OF THIS PRODUCTION IS STRICTLY PROHIBITED

\*MEMBERS OF ACTORS' EQUITY ASSOCIATION, THE UNION OF ACTORS AND STAGE MANAGERS.

+THE DIRECTOR IS A MEMBER OF THE STAGE DIRECTORS AND CHOREOGRAPHERS SOCIETY, A NATIONAL THEATRICAL LABOR UNION.

## CAST OF CHARACTERS

### MAVERICK & RAPTOR CAST

PERFORMS: 2/8 - 2/25

Matt Koenig\* ..... Karnak  
Zoë Lewis-McLean ..... Constance Blackwood  
Alexa Lopez ..... Jane Doe

### MAVERICK CAST

PERFORMS: 2/8, 2/10, 2/15, 2/17, 2/21, 2/23, 2/25

Eileen Brady ..... Ocean O'Connell Rosenberg  
Trevor Gill-Snow ..... Noel Gruber  
Kyle MacDonald ..... Ricky Potts  
Zach Mackiewicz ..... Mischa Bachinski

### RAPTOR CAST

PERFORMS: 2/9, 2/11, 2/14, 2/16, 2/18, 2/22, 2/24

Izzy Baker ..... Ocean O'Connell Rosenberg  
Elliot Block ..... Mischa Bachinski  
Danny Bó ..... Ricky Potts  
Benjamin Michael Hall ..... Noel Gruber

### UNDERSTUDY

Jacob Anderson ..... Mischa / Understudy  
Sophia Edwards ..... Constance / Understudy  
Bebe Moss ..... Jane / Understudy

## PRODUCTION STAFF

Victoria Bussert+ ..... Director  
Matthew Webb ..... Music Director  
Lauren Tidmore Marousek ..... Choreographer  
Laura Welsh Berg ..... Intimacy Director  
Nathan Henry ..... Casting Director  
Gideon Temple ..... Associate Music Director  
Kenna Wilson ..... Assistant Director / Talia / Assistant Projection Designer  
Jonathan Horowitz, Stephanie Montini ..... Assistant Stage Managers  
Eleanor Pierce ..... Production Assistant  
Keira McDonald ..... Karnak Movement Coach  
Jack-Anthony Ina\* ..... Production Stage Manager / Projection Designer / Master Electrician  
Tesia Benson ..... Costume Designer  
Carlton Guc ..... Sound Designer  
Trad A Burns ..... Scenic / Lighting Designer  
Emma Bayless ..... Assistant Lighting / Scenic Designer  
Gracie Frazier ..... Assistant Costume Designer  
Brandon Drone ..... Assistant Sound Designer  
Betty Pitcher ..... Wardrobe Supervisor  
Mary Kahelin, Jess Hartley ..... Follow Spot Operators  
Ryan Casselberry, Bri Foley, Jacob Anderson ..... Run / Wardrobe Crew  
Gracelyn Shalaski ..... Sound / A2  
Chase Kessler ..... Sound Apprentice  
Micaela Barrett, Monica Chung, Chi Weng Chan ..... Scenic Artist  
Jill England, Dan Telford, Tom Wang ..... Carpenters  
DJ Brannon, Hunter Miller ..... Electricians  
Scott Spence ..... Artistic Director

## ORCHESTRA

Matthew Webb ..... Conductor / Keyboards  
Michael Simile ..... Guitar  
Jason Stebelton ..... Bass  
Hannah Benjamin ..... Cello  
Electronic Music Programmed by ..... Matthew Webb

WE *love* SUMMER CAMPS



BALDWIN WALLACE UNIVERSITY

COMMUNITY

BW arts

SCHOOL

Explore all you can learn and do this summer  
at [community.bw.edu/cas](http://community.bw.edu/cas).



## MUSICAL NUMBERS

Dream of Life .....	Jane Doe
Uranium .....	Ensemble
Sailing Through Space .....	Ensemble
What the World Needs .....	Ocean and Ensemble
Noel's Lament / That F*cked Up Girl.....	Noel and Ensemble
Every Story Has a Lesson .....	Ocean and Ensemble
This Song is Awesome.....	Mischa and Ensemble
Talia .....	Mischa and Ensemble
Space Aged Bachelor Man .....	Ricky and Ensemble
The Ballad of Jane Doe .....	Jane Doe and Ensemble
The New Birthday Song.....	Ensemble
Sugarcloud .....	Constance and Ensemble
Sailing Through Space (Reprise) .....	Ensemble
It's Just a Ride .....	Ensemble

## A NOTE FROM THE ARTISTIC DIRECTOR

Thirteen amazing seasons!! That's how long Beck Center's annual collaboration with Baldwin Wallace Musical Theatre has been humming along. Since 2012 when Spring Awakening exploded onto the scene, audiences and critics alike eagerly await each year to see what new thrills the next project will bring. Program Director Victoria Bussert has led this program to arguably be one of the the top five Musical Theatre programs in the country, routinely populating Broadway, Off-Broadway, and national tours with their alumni. With too many success stories to name, these students sang, acted and danced their way through so many memorable titles as part of this collaboration, including In The Heights, The Scottsboro

Boys, Hair, Carrie, and so many more.

We hope you enjoy this newer musical — Ride The Cyclone. It's a wild ride that has been thoroughly embraced, especially by younger audiences everywhere where it has gained cult status on TikTok!

Thank you to YOU . . . our audience . . . for embracing this vaunted collaboration over the seasons. You mean everything to its success!

**SCOTT SPENCE**  
ARTISTIC DIRECTOR  
February, 2024

## NEXT UP AT BECK CENTER FOR THE ARTS!

### PROFESSIONAL THEATER

#### JITNEY

APRIL 5 – MAY 5, 2024

#### STUDIO THEATER

This Tony Award Winner for Best Revival of a Play in 2017, reveals the story of generations of jitney drivers.

### A DOLL'S HOUSE, PART 2

MAY 31 – JUNE 30, 2024

#### STUDIO THEATER

This Tony Award winner of Best Play 2017, picks up fifteen years after Nora Helmer slammed the door on her domestic life. What will her sudden return mean to those she left behind?

### BEAUTIFUL, THE CAROLE KING MUSICAL

JULY 12 – AUGUST 11, 2024

#### SENNEY THEATER

A Tony and Grammy-Award winner, tells the story of the early

life and career of Carole King, using such timeless hits as, "So Far Away," "Will You Love Me Tomorrow," and "You've Lost That Lovin' Feeling," plus many more.

### YOUTH THEATER

#### MEAN GIRLS

#### HIGH SCHOOL VERSION

MAR 15 – MAR 24, 2024

#### SENNEY THEATER

Adapted from Tina Fey's hit film, Mean Girls. Follow Cady Heron as she navigates the wild and vicious ways of suburban Illinois.

### The Wizard of Oz

MAY 10 – 19, 2024

#### SENNEY THEATER

This charming musical features Dorothy who dreams of what lies beyond the rainbow. Learn about friendship, bravery, and that There's No Place Like Home.



INDIVIDUAL  
TICKETS, INCLUDING  
SMART SEATS®, ON  
SALE NOW!



**BECKCENTER.ORG**  
**216.521.2540**

# CAST OF CHARACTERS

**MAVERICK & RAPTOR CAST PERFORMS: 2/8 - 2/25**



**MATT KOENIG\***  
KARNAK



**ZOË LEWIS-MCLEAN**  
CONSTANCE BLACKWOOD



**ALEXA LOPEZ**  
JANE DOE

**MAVERICK CAST PERFORMS: 2/8, 2/10, 2/15, 2/17, 2/21, 2/23, 2/25**



**EILEEN BRADY**  
OCEAN O'CONNELL  
ROSENBERG



**TREVOR GILL-SNOW**  
NOEL GRUBER



**KYLE MACDONALD**  
RICKY POTTS



**ZACH MACKIEWICZ**  
MISCHA BACHINSKI

**RAPTOR CAST PERFORMS: 2/9, 2/11, 2/14, 2/16, 2/18, 2/22, 2/24**



**IZZY BAKER**  
OCEAN O'CONNELL  
ROSENBERG



**ELLIOT BLOCK**  
MISCHA BACHINSKI



**DANNY BÓ**  
RICKY POTTS



**BENJAMIN MICHAEL HALL**  
NOEL GRUBER

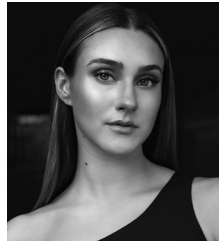
## UNDERSTUDY



**JACOB ANDERSON**  
MISCHA U/S



**SOPHIA EDWARDS**  
CONSTANCE U/S



**BEBE MOSS**  
JANE U/S

# CAST OF CHARACTERS

**MATT KOENIG\* (Karnak)** is an Assistant Professor of Theatre at Baldwin-Wallace University. He has worked at Utah, Idaho, Lake Tahoe, New Swan Shakespeare Festivals, Great Lakes Theater, Pioneer Theatre Company, Florida Studio Theatre, PCPA, Garry Marshall Theatre, Ensemble Theatre Company, etc. Upcoming films include: *California King* starring Joel McHale and Victoria Justice and *Homestead* starring Neal McDonough AEA. MFA UC. Irvine.

**ZOË LEWIS-MCLEAN (Constance Blackwood)** Zoë (she/they) is from Albany, NY. She is a junior at Baldwin Wallace. This is Zoë's second show at Beck Center! Recent credits include Maureen (*RENT*; Cain Park), Nell/Charlaine u/s (*Ain't Misbehavin'*); Great Lakes Theatre, and John Willoughby u/s (*Sense and Sensibilities*; Great Lakes Theatre). Other credits include Lizzie u/s (*Lizzie*; Beck Center), Abigail Williams (*The Crucible*; Baldwin Wallace), and Cedric (*Puffs*; Albany Barn). Zoe would like to say thanks to Mom, Vanessa, Jason, BWMT&D, and Black and Brown creatives everywhere!  
#representationmatters  
IG: @mrmoonie

**ALEXA LOPEZ (Jane Doe)** is a Senior music theatre student at Baldwin Wallace and thrilled to be returning to Beck Center for *Ride the Cyclone*. Regional credits include Sonya (*Great Comet of 1812*/Idaho Shakespeare & GLT), Mimi (*Rent*/Cain Park), Lizzie (*Lizzie*/Beck), Maria (*West Side Story*/Porthouse), Mollie (*Perpetual Sunshine* and *the Ghost Girls*); 2021 ASCAP Award Winner/Beck). Last year, she was honored to perform the national anthem for

over 65,000 fans at her first major football game, Browns vs. Steelers, for Hispanic Heritage Month. Alexa also won 'Best Actress in a Musical' in the 2022 Cleveland Critics Circle Theatre Awards for her work as Maria in Porthouse's *West Side Story*. Alexa thanks her friends, mentors, and Mom & Dad for their endless love and support.  
Alexaelizabethlopez.com |  
IG: @alexaelopez

## MAVERICK CAST

**EILEEN BRADY (Ocean O'Connell Rosenberg – Maverick Cast)** is thrilled to be back at Beck Center in *Ride the Cyclone*. Currently a Junior Music Theater major at Baldwin Wallace, her favorite roles include Portia in *Something Rotten* at The Beck Center, Mae in *The Wild Party*, and Little Red in *Into the Woods* at BW. She feels so grateful for this opportunity and would like to thank Vicky, Matt, Lauren, her inspiring cast mates and the entire production team for making this show so special. Hugs to her family and friends, Dr. U, and Kyle for their unwavering support. Enjoy the ride!

**TREVOR GILL-SNOW (Noel Gruber – Maverick Cast)** Trevor is a current junior at Baldwin Wallace, studying for a BM in Music Theatre, and they are so excited to be returning to Beck Center for *Ride The Cyclone*! Some of his favorite credits include *Bare* (Jason), *Lobby Hero* (Jeff), and *Something Rotten* (Nigel). In their spare time, Trevor enjoys playing and writing music, and collecting little frog figurines.  
IG: @trevorgillsnow

**KYLE MACDONALD (Ricky Potts – Maverick Cast)** is so excited to be a part of his second Production at Beck Center! He is currently a

Sophomore Music Theatre major at Baldwin Wallace. His past credits include (Swing/Ensemble) at Beck Center, *Bare* (Alan) at Playhouse Square and *Pippin* (Ensemble) at BW. He would like to thank Vicky, Lauren, Matt and the whole team for this opportunity. Special thanks to Greg Harrell, his family, Eileen and his cat Annee. IG: @kylemacdonald

## ZACH MACKIEWICZ (Mischa Bachinski – Maverick Cast)

is thrilled to be a part of this unique production in his senior year. National Tours: *Pippin*, *Mary Poppins*. Theatre: *West Side Story* (Riff). *Pippin* (Lewis), *Bright Star* (Jimmy Ray). Zach has also appeared in TV/Film. Zach would like to thank his family, friends and Creative Team for the endless support and opportunities.  
IG: @zachmackiewicz

## RAPTOR CAST

**IZZY BAKER (Ocean O'Connell Rosenberg – Raptor Cast)** is ecstatic to be a part of *Ride the Cyclone* and to be returning to Beck Center for the Arts! This is her second show at Beck after appearing in *Ghost* last spring. Izzy is a Sophomore Music Theatre major at Baldwin Wallace University and is from Las Vegas, Nevada. Recent Regional credits include Miss Adelaide in *Guys and Dolls*, Betty in *Beautiful*, and Holly u/s/Ensemble in *The Wedding Singer*. Offstage, she is a party princess and certified lifeguard. She would like to thank Vicky, Matt, Lauren, Sandy, and the team for this incredible opportunity, her catholic school upbringing for the inspiration, and her parents and friends for their constant love and support. IG: @izzybbaker

CONTINUED PAGE 13

AMERICA'S PREMIER LYRIC THEATER FESTIVAL

# OHIO LIGHT

45<sup>TH</sup> SUMMER  
SEASON



O P E R A

JUNE 8 – JULY 28, 2024

*Frank Loesser* GUYS & DOLLS

*Rodgers & Hammerstein* THE SOUND OF MUSIC

*Noel Gay* ME AND MY GIRL

*Gilbert & Sullivan* THE GONDOLIERS

*Franz Lehár* THE COUNT OF LUXEMBOURG

*Monckton & Talbot* THE ARCADIAN



**330.263.2345**

**ohiolightopera.org**

*Resident Professional Company of The College of Wooster*

## CAST OF CHARACTERS

CONTINUED FROM PAGE 11

**ELLIOT BLOCK (Mischa Bachinski – Raptor Cast)** is a sophomore Musical Theater major and is stoked to be a part of this phenomenal cast. Some of his recent credits include Jack Worthing in *The Importance of Being Earnest*, Edward Bloom in *Big Fish*, Lysander in *A Midsummer Night's Dream*, Laurie Laurence in *Little Women*, and Benedick in *Much Ado About Nothing*. Elliot would like to thank his family for their love and support. He would also like to thank everyone who worked on this show for putting their all into creating this wonderful production.

**DANNY BÓ (Ricky Potts – Raptor Cast)** is a Senior Music Theatre Major at Baldwin Wallace University. He was last seen on the Beck Center stage as Subway Ghost in *Ghost The Musical*. Other recent credits include Natasha Pierre and *The Great Comet of 1812*, *As You Like It*, *Romeo and Juliet*, *The Sound of Music*, *The Lightning Thief: The Percy Jackson Musical*. He would like to thank his family and mentors for their ongoing love and support! IG: @dannybodelongaig

**BENJAMIN MICHAEL HALL (Noel Gruber – Raptor Cast)** Cleveland: *Natasha, Pierre & The Great Comet of 1812*; *Ghost*. Iowa: *The Wedding Singer*; *Sister Act*; *State Fair*. Texas:

*Tuck Everlasting*; *Pygmalion*; *Shrek*; *Mamma Mia*. Benjamin Michael is in their junior year as a Musical Theatre major at Baldwin Wallace University. Benjamin Michael sends love to their mom, dad and brother in Texas. IG: @benjaminmichaell.

### UNDERSTUDY

**JACOB ANDERSON (Mischa U/S)** is a sophomore Music Theatre major at Baldwin Wallace University and is excited to be a part of his first production at Beck Center. Regional: *Jersey Boys*, *Grease*, and *Bright Star* (Timber Lake). Las Vegas: *Footloose*; *The Addams Family*; *The Wedding Singer*; *Something Rotten*. Jacob sends all of his love to his mom and dad for being so supportive and for sharing their love of music with him. Special thanks to Vicky, Matt, Lauren, and the creative team for the opportunity to be a part of this amazing production. IG and TikTok: @jxcbanderson

**SOPHIA EDWARDS (Constance U/S)** is a Sophomore Music Theatre major at Baldwin Wallace and is thrilled to take part in BWMT's *Ride the Cyclone* at Beck Center! Previous credits include Ensemble in *Pippin*, Nadia in *Bare* at Cleveland Play House, and Ensemble/

Madeline u/s in *Wild Party*. She would like to say a big thank you to Vicky, Matt, Lauren, and the entire production team for the opportunity to be a part of this show, and for their constant encouragement. She would also like to thank her family, her friends and her loved ones for their unconditional love and support. She hopes you enjoy the show!

**BEBE MOSS (Jane U/S)** Bebe is a sophomore music theatre major at Baldwin Wallace University and from Dallas, TX. Recent musical theatre credits include *The Wild Party* (Baldwin Wallace University), *Pippin* (Baldwin Wallace University), and *The Sound of Music* (Blossom Music Center). Recent and upcoming opera credits include *The Merry Widow* (Baldwin Wallace University) and *We've Got Our Eye On You* (Baldwin Wallace University). She has won multiple classical and musical theatre style vocal competitions through organizations such as Carnegie Hall's Golden Voices of America, the YoungArts Foundation, and NATS. She would like to thank all of her mentors, loved ones, and her incredible mom and dad for their continuous love and support. IG & TikTok: @bebe.moss

TOGETHER WE  
CREATE ARTS  
EXPERIENCES



SIGN UP FOR OUR  
NEWSLETTER AT  
BECKCENTER.ORG

# PRODUCTION STAFF



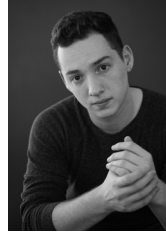
**SCOTT SPENCE**  
ARTISTIC DIRECTOR



**VICTORIA BUSSERT+**  
DIRECTOR



**MATTHEW WEBB**  
MUSIC DIRECTOR



**GIDEON TEMPLE**  
ASSOCIATE MUSIC  
DIRECTOR



**LAUREN TIDMORE  
MAROUSEK**  
CHOREOGRAPHER



**JACK-ANTHONY INA\***  
PRODUCTION  
STAGE MANAGER,  
PROJECTION  
DESIGNER



**JONATHAN  
HOROWITZ**  
ASSISTANT STAGE  
MANAGER



**STEPHANIE  
MONTINI**  
ASSISTANT STAGE  
MANAGER



**ELEANOR PIERSE**  
PRODUCTION  
ASSISTANT



We couldn't be more excited to support Beck Center through our in-kind donation of photography services.

*Wetzlers*  
PHOTOGRAPHY  
wetzlers.com • 216-771-1554  
Commercial • Advertising • Editorial

## PRODUCTION STAFF

**SCOTT SPENCE (Artistic Director)** Is enjoying his 33rd season at Beck Center! Since 1990, he has produced over 200 shows, directing over 100 himself. The list of favorites grows every season, and includes *Parade*, *A Man of No Importance*, *Sweeney Todd*, *Hair*, *Picasso at the Lapin Agile*, *The Farnsworth Invention*, *Reefer Madness*, *The Fix*, *Zombie Prom*, *Bloody Bloody Andrew Jackson*, *Evil Dead The Musical*, *The 25th Annual Putnam County Spelling Bee*, and the box office smash hits *The Producers* and *Altar Boyz*. Recently, Scott added to those favorites with productions of *City of Angels* and *Matilda*. He is very proud of the awards and acclamations Beck Center for the Arts has received over the past decade and is especially grateful for having won the Northern Ohio Live Award for Achievement in Theatre in 2006. Outside of these walls, Scott's directorial assignments have included a remounting of Beck Center for the Arts' hit production of *Altar Boyz* at Playhouse Square's beautiful Hanna Theatre, *Das Barbecü* at Opera Cleveland, *The Last Night of Ballyhoo* at Case Western Reserve University's Eldred Theatre, *Oh Dad Poor Dad....* at Cleveland State University Summer Stages, and *Noises Off* at both Weathervane Playhouse in Akron and Berea Summer Theatre. An adjunct faculty member at Cleveland State University, Scott has also had the privilege to direct Sartre's *No Exit* and Strindberg's *Miss Julie*. Scott holds an MFA in Directing from Western Illinois University and is a trained stage fight choreographer, having studied extensively with the SAFD. As always, he dedicates all the work he does to his two extraordinarily talented leading ladies, Rachel and Carleigh. You both amaze me every day.

**VICTORIA BUSSERT+ (Director)** is thrilled to direct another wonderful collaboration between Beck Center and Baldwin Wallace University Musical Theatre program. Her previous Beck Center directing credits include *GHOST*, *LIZZIE*, *ONCE*, *HAIR*, *IN THE HEIGHTS*, *DOGFIGHT*, *CARRIE the Musical*, *NEXT TO NORMAL*, *SPRING AWAKENING* (Cleveland Critics Circle Award for Best Director 2012), *PASSION*, *GREY GARDENS*, and *THE BREAKUP NOTEBOOK*. Her work has been seen at many theaters around the country including Manhattan Theatre Club, Goodspeed Opera, Repertory Theatre of St. Louis, Portland Stage, Dallas Theatre Center, Cincinnati Playhouse, Anchorage Opera, and Firebrand Theatre, the first feminist musical theatre company in the country. Locally, she has directed for Cleveland Play House, Dobama Theater, Cleveland Opera, Cain Park (22 seasons) and The Cleveland Orchestra at Blossom. Favorite recent projects include the European and Chicago premieres of *LIZZIE*, *MAMMA MIA* for Idaho Shakespeare Festival/Great Lakes Theatre/ Lake Tahoe Shakespeare Festival, *THE SOUND OF MUSIC* at Blossom and *NATASHA, PIERRE AND THE GREAT COMET OF 1812 for ISF/GLT* (Cleveland Critics Circle Award for Best Director 2023). Victoria is resident director for Great Lakes Theater and Director of Music Theatre for Baldwin Wallace University. Many thanks to Scott Spence for continuing this amazing collaboration, to Matt, Lauren, Trad, Tesia and Jack for being such a joyous and creative dream team, to my students who continue to inspire and delight me, and to my sweet family -- Dale, Ondie and Lizzie who make it all worth it! For Rachel, with thanks.

**MATTHEW WEBB (Music Director)** Matthew is Music Director of Music Theatre at Baldwin Wallace University: *The Wild Party*, *Into the Woods*, *Spring Awakening*, *Kinky Boots*, and others. His previous Beck Center credits include *Ghost*, *LIZZIE*, *5x15*, *Scottsboro Boys*, *Once*, *Hair*, *Breakup Notebook*, and *Passion*. He is also resident music director at Great Lakes Theater, Idaho Shakespeare Festival, and Lake Tahoe Shakespeare Festival: *Great Comet*, *Little Shop of Horrors*, *Music Man*, *Mamma Mia*, *Forever Plaid*, *The Fantasticks*, *Sweeney Todd*, *Sondheim on Sondheim*, *Guys & Dolls*, *Cabaret*, *Bat Boy*, *The Mystery of Edwin Drood*, *Into the Woods*, and *A Christmas Carol*. As sound designer and composer for GLT/ISF/LTSF: *As You Like It*, *39 Steps*, *The Tempest*, *Much Ado About Nothing*, *Julius Caesar*, *Taming of the Shrew*, *Macbeth*, and *Hamlet*. Many thanks to Vicky, Scott, and his amazing parents, Jerry & Carol.

**GIDEON TEMPLE (Associate Music Director)** Previous Beck Center credits include *GHOST* (Associate Music Director) and *LIZZIE* (Assistant Music Director). Other BWMT credits include *PIPPIN* (Keys 2) and *THE WILD PARTY* (Keys 2). Gideon also releases original music on all streaming platforms with his brother under the artist name, Temple Brothers. He would like to thank Vicky, Matt, Ryan and Dr. Kim for their continued support. INSTAGRAM: @gideon.temple @templebro

**LAUREN TIDMORE MAROUSEK (Choreographer)** is a graduate of Baldwin Wallace University with her BFA in Acting and Dance Minor. Choreographic credits include Beck Center for the Arts: *Joseph and the Amazing Technicolor Dreamcoat*; *Ghost*; *Elf: The Musical* (2022 Reprise Production), *Matilda* (Associate), *Shrek The Musical* (Associate/Dance Captain); The Cleveland Orchestra at Blossom

CONTINUED PAGE 17

**It's time for a new identity.**

**One that tells the story of creativity  
in Ohio and illustrates it.**

**Ohio Arts**  
COUNCIL



**Expression is an essential need.**

**By better illustrating our story,  
we can better help you express yours.**

*Complete the story at [oac.ohio.gov/identity](http://oac.ohio.gov/identity).*

30 EAST BROAD STREET, 33RD FLOOR, COLUMBUS, OHIO 43215-3414 | 614-466-2613

**OAC.OHIO.GOV | @OHIOARTSCOUNCIL | #ARTSOHIO**



## PRODUCTION STAFF

Music Center: *The Sound of Music*; Baldwin Wallace University: *Wild Party*; Playhouse Square: *Bare, Cleveland* Musical Theater: *Jane Eyre* (Assistant - Regional Premiere); Porthouse Theatre: *Man of La Mancha* (Assistant). Proud Associate Member of the Stage Directors and Choreographers Society. Much love to Vicky, Matt, Jack, and the entire cast and crew for this excitingly wild ride.

**JACK-ANTHONY INA\*** (**Production Stage Manager, Projection Designer**) is a director, designer, and stage/production manager with over 300 production credits. His work has recently been seen in Atlanta, New York City, and throughout Northeast Ohio. He is a proud member of Actors' Equity Association and a graduate of Baldwin Wallace University, where he is now the Production Manager. Many thanks to Vicky, Matt, Lauren, and the incredible designers, ASMs, cast, and crew! Recent Credits: *A Soulful Christmas* (Lighting Designer), *Ragtime* (Lighting Designer), *Motown* (Production Manager, Lighting Designer), *Sister Act* (Lighting Designer), *Ghost the Musical* (Production Stage Manager), *The Wild Party* (Production Stage Manager), *Sweeney Todd* (Choreographer, Lighting Designer), *The Lightning Thief* (Scenic/Lighting/ Props Designer), *The Color Purple* (Lighting Designer), *Kinky Boots* (Lighting/Video Designer), *Disney's Newsies* (Director, Music Director/ Conductor), *Secrets at 54 Below* (Director). IG: @jackanthonyina | jackanthonyina.com

**JONATHAN HOROWITZ** (**Assistant Stage Manager**) Baldwin Wallace Theatre and Dance: (PSM) *The Nether*, *Dread Fascination*. Baldwin Wallace Musical Theatre (PSM) *Pippin* (ASM) *Into The Woods* *Lightning Thief: The Percy Jackson Musical*. Beck Center *Ride the Cyclone*, *Ghost Arrowrock Lyceum Theater* (PA) *State Fair*,

*Laughter on the 23rd Floor*. Jonathan is a junior stage management major at Baldwin Wallace University and would like to thank their friends and family for all their support.

**STEPHANIE MONTINI (Assistant Stage Manager)** is a sophomore Stage Management major from Pittsburgh, Pennsylvania. Her Baldwin Wallace credits include *Pippin* (ASM), *Testing Ground* (PSM), *Crimes of the Heart* (PSM), *Fyoo Zh En '23* (ASM), and *Dread Fascination* (ASM). Other stage management credits include *Young Frankenstein*, *Once Upon a Mattress*, and *Leader of the Pack*. Stephanie would like to thank her friends and family for their support.

**ELEANOR PIERSE (Production Assistant)** Eleanor is a freshman Stage Management and Arts Management double major from North Olmsted, Ohio. She's been performing and working behind the scenes for 13 years. Recent credits include *The Music Man* (Assistant Choreographer/Ensemble), *Clue* (Stage Manager), *Little Shop of Horrors* (Costume Designer), *The Dining Room* (Assistant Stage Manager). Thank you to the production team and cast for all the hard work put into the production. She sends her thanks to her family as well for their constant support. Enjoy the show!

**TESIA BENSON (Costume Designer)** Selected Costume Designs: *Natasha, Pierre & the Great Comet of 1812*. (Idaho Shakespeare Festival/Great Lakes Theatre) *Land of Oz*, *Life Sucks*, *Grounded*, *Marie Antionette*, *Superior Donuts* (Dobama Theatre), *La Voix Humaine* (Opera Cleveland), *Ragtime*, *Smokey Joe's Café* (Cain Park), *Dontrell Who Kissed the Sea and Ancestra* (Cleveland Public Theatre), *Ghost the Musical*, *Bent*, *'night Mother* (Beck Center for the Arts). Selected Scenic Designs: *Egress* (w), *Grounded*, *Revolt. She Said. Revolt Again*. (Dobama Theatre). Other

credits: *Apollo's Fire*, Keystone Repertory Theatre, and Baldwin Wallace University. Tesia holds her MFA in Costume Design from The University of Illinois at Urbana Champaign and is an Associate Professor of Costume Design at Baldwin Wallace University.

**CARLTON GUC (Sound Designer)** recent design credits include *Avenue Q* (Cleveland State University); *Joseph and the Amazing Technicolor Dreamcoat* (Beck Center), *Cat's Paw* (Beck Center), *Rent* (Cain Park). Additionally, Carlton manages the Performing Arts Center for Nordonia School District; Between shows you'll find Carlton playing guitar, writing computer software, or coaching skiing; [www.carltonguc.com](http://www.carltonguc.com)

**TRAD BURNS (Scenic / Lighting Designer)** has been designing scenery and lighting professionally since 1989 for theatre, dance, and amusement parks. His theatre designs include works for New York Theatre Workshop, The Public Theatre, Playwrights Horizons, HERE, Classic Stage Company, Indiana Repertory Theatre, Cleveland Play House, Great Lakes Theatre Festival, Cleveland Public Theatre, Dobama, and Cain Park. Trad spent over 20 years designing for theme parks around the world, including Cedar Point, Knott's Berry Farm, Walt Disney World, Disneyland, Disneyland Japan, Tokyo Disney Sea, and Universal Studios.

**EMMA BAYLESS (Assistant Lighting and Scenic Designer)** Regional lighting designs: *Once On This Island* (Beck Center for the Arts), *Singin' in the Rain* (SCERA Shell), *Snow White* (Sting & Honey), *This Bird of Dawning* (Sting & Honey). MFA designs at Texas State University: *The Wolves* (lighting and scenic), *DeMaskUs a.k.a. Running* (lighting). She would like to thank her university mentors and her family for supporting her in her theatre career.

# Act one begins



Beck Center for the Arts

## ... WITH INVESTMENT BY CUYAHOGA ARTS & CULTURE

Cuyahoga Arts & Culture (CAC) uses public dollars approved by you to bring arts and culture to every corner of our County. From grade schools to senior centers to large public events and investments to small neighborhood art projects and educational outreach, we are leveraging your investment for everyone to experience.



Your Investment:  
**Strengthening Community**

Visit [cacgrants.org/impact](http://cacgrants.org/impact) to learn more.

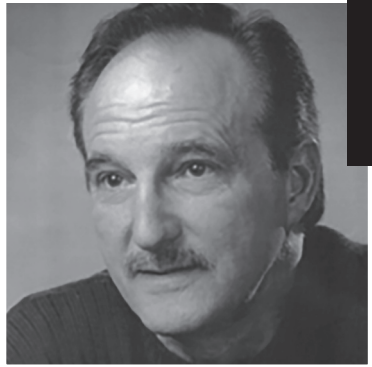
*Remembering*

# ED DRAGONY

## ACTOR-CREW-SUPPORTER

A 35-year member of the local theater community, Ed wishes he were on stage tonight. So do we. Ed's passion was to entertain and to spread happiness. He attended the shows of everyone he knew. May his spirit of love and kindness live on through the many lives he touched.

- The Dragony Family



## TROY BRATZ REALTOR

Residential | Commercial  
And Your Lakewood Neighbor

📞 216.702.2196

✉️ TroyBratz@KW.com

📱 @TroyBratzKW

**KW ELEVATE**  
KELLERWILLIAMS.



**SELL** now for top dollar | **BUY** for your future | **INVEST** in the community



**“Buy a house. Sell a home.”**



JOIN US  
FOR OUR 2024

# Broadway Adventure!



**Beck Center for the Arts invites you to join us from September 19 to 22, 2024, for an unforgettable NYC Broadway Experience.** During this event, our guests will have the opportunity to immerse themselves in the world of Broadway and enjoy a wide range of exclusive activities:

- Engage in private salon discussions and witness captivating performances by renowned Broadway stars.
- Embark on exclusive tours of iconic Broadway theaters to discover their rich history and secrets.
- Secure excellent seats for the most spectacular Broadway shows.
- Dive into behind-the-scenes adventures, gaining insight into the inner workings of the theater industry.
- Indulge in a luxury learning experience that combines the best of theater and architecture.
- Gain access to exclusive insider information from the theater industry.
- Explore the captivating architecture of New York City with specialized tours.
- Immerse yourself in a comprehensive learning experience that combines education and entertainment.
- Enjoy a top-tier, high-quality experience tailored for both theater and architecture enthusiasts.

*"We had a WONDERFUL time. We made lovely new friends, and lasting memories. The entire trip was so beautifully curated!"* —Marci & John R, 2023

BECKCENTER.ORG | 216.521.2540



All programs and artists are subject to change without notice.



## Announcing the Cleveland Pops Orchestra 2023/2024 Season!

Call to purchase tickets:

216.765.7677

Ask about our Subscription Packages!

### A Night in Hollywood

Sat., 10/21/23 - 8pm - Severance



**Music from your favorite blockbuster movies** including Star Wars, Indiana Jones, Little Mermaid, Beauty and the Beast, Titanic and more.

### A Mediterranean Cruise

Sat., 11/18/23 - 8pm - Severance



**A stay-cation with the Pops!** Enjoy the enchanting sounds of France, Italy, Spain, and Greece with French songstress Gay Marshall.

### Holiday Cheer!

Sun., 11/26/23 - 2pm - Connor Palace



**Making spirits bright** with this annual concert featuring the Pops Chorus, Dancing Santas, adoptable shelter pets and more holiday magic!

### New Years Eve: Concert & Party

Sun., 12/31/23 - 9pm - Severance



**End 2023 with song and dance.** After the concert, enjoy a cash bar as you dance the night (and year!) away and count down to the midnight balloon drop.

### A Tribute to the Beatles

Sat., 2/3/24 - 8pm - Severance



**Celebrating 60 years of the Beatles!** Hear music from the early days through the solo years performed by the Pops and Classical Mystery Tour, four musicians who sound and look just like the Beatles.

### Champagne & Shamrocks

Fri., 3/1/24 - 8pm - Severance



**Kick off March with the songs and dances of Ireland** featuring Cleveland's own Murphy's Irish Dancers and vocalist Connor Bogart O'Brien.

### Broadway Rocks

Fri., 4/12/24 - 8pm - Severance



**Shining the spotlight on musical theatre** as Broadway vocalists perform selections from shows including Wicked, The Book of Mormon, Hairspray, Rent, The Wiz and more.

### A Tribute to our Armed Forces

Sat., 6/1/24 - 8pm - Severance



**Saluting our heroes** with stirring patriotic music and a special tribute to NASA featuring videos from space flights, furnished by NASA Glenn in Cleveland.

For more information, visit: [ClevelandPops.com](http://ClevelandPops.com)

# Are you interested in becoming an active part of a vibrant arts community?



We are on the lookout for enthusiastic and fun-loving women to join the Beck Center for the Arts Women's Board. Our mission revolves around supporting and enriching the arts at Beck Center through both fundraising efforts and dedicated volunteering.

The Beck Center Women's Board has a rich history, tracing its origins back to 1936 when it operated under the Lakewood Little Theatre. Since then, our dedicated members have tirelessly upheld the tradition of supporting and serving the theater community at Beck Center for the Arts. Over the years, our Women's Board has raised and contributed hundreds of thousands of dollars and donated countless volunteer hours to support the various performances, programs, and daily operations at Beck Center for the Arts.

Our activities encompass a variety of engaging events, including:

- Summer Picnic
- Fundraisers
- Raffles
- Ushering Performances
- And other opportunities as they occur, in an effort to serve and support Beck Center for the Arts

If you'd like to learn more and potentially become a part of this passionate community, please reach out to Karen at (216) 904-6761 or send an email to Patty at [pattyb1328@gmail.com](mailto:pattyb1328@gmail.com)

*"Work Hard for the Arts and Enjoy!"*

*- Women's Board Motto*

## BECK CENTER ANNUAL CONTRIBUTORS

We gratefully acknowledge the support of the following individuals, corporations, foundations, government grants, and organizations, which have contributed to Beck Center for the Arts' Annual Fund in support of our mission to inspire, enrich, and transform lives through dynamic arts experiences. The current listing includes donors of \$250 or more to the Annual Fund between October 24, 2022, and January 24, 2024.

We greatly appreciate all our supporters. For any corrections or more information on the benefits of these giving circles, please contact Kristen Levy, Director of Development, at [klevy@beckcenter.org](mailto:klevy@beckcenter.org) or 216.521.2540.

### LEADERSHIP CIRCLE (\$10,000 and above)

Rachel Abernethy  
The Callahan Foundation  
The Cleveland Foundation  
Community West Foundation  
Cuyahoga Arts and Culture  
Cuyahoga County  
The William R. Daniels Memorial Fund  
Dorn Family Foundation  
First Federal Lakewood  
Joan Alice Ford  
The Char and Chuck Fowler Family  
Foundation  
Chann Fowler-Spellman and Ed Spellman  
Charles and Marie Grossman  
The George Gund Foundation  
Healthy Lakewood Foundation  
Kulas Foundation  
City of Lakewood  
The Vida C. Logan Fund  
Robert Lugibihl  
Nancy and John McMillan  
John P. Murphy Foundation  
The Nord Family Foundation  
Michael and Carol O'Brien  
Ohio Arts Council  
PNC Bank  
The Reinberger Foundation  
John A. Reynolds  
Sandy Sauder  
Vivian H. Schulze Trust  
The Kelvin and Eleanor Smith Foundation  
State of Ohio  
Turner Construction Company

### FOUNDER'S CIRCLE (\$5,000 - \$9,999)

Anonymous  
Cleveland Clinic  
Cuyahoga County Board of Developmental  
Disabilities  
The George W. Codrington Charitable  
Foundation  
Harry F. Fox and Emma R. Fox Charitable  
Foundation  
Gallery Group, Inc.  
Kathy and Ken Haber  
Harold L. and Patricia D. Williams Charitable  
Fund

Martha J. Lanning  
The Laub Foundation  
Ryan and Alysia McKean  
National Association of State Procurement  
Officials (NASPO)  
Nordson Corporation Foundation  
Lee and Maria Parks  
Anthony and Mary Rego  
Brad and Margaret Richmond  
Jean Stell  
Karen Strang  
Philip Wenk  
Women's Board of Beck Center  
Laird and Jennifer Wynn

### BENEFACTOR'S CIRCLE (\$2,500 - \$4,999)

Carol Barnak  
Curt Brosky and Betty Tereck  
Civista Bank  
Doug Cooper  
Eaton Charitable Fund  
Richard and Judy\* Fox  
Cindy and Tim Friedmann  
William Garrison and Mary Jo Mlakar  
William C. Hartman  
David and Cheryl Jerome  
Emily Jett and Mark Getsay  
Terry and Dona Jones  
Pat and Jim Oliver  
Jeff and Nora Poore  
Jeffrey and Susan Ritter  
Robert Half Recruiters & Employment  
Agency  
James M. Robinson  
Joyce and Walter Senney  
Jan Soeder\*  
Ellen Todia and David Matthiesen  
Landon and Corey Tracey  
Ulmer and Berne LLP

### CHAIRMAN'S CIRCLE (\$1,000 - \$2,499)

Elise and Steve Auvil  
Benevity  
Bober Markey Fedorovich  
The Bonne Bell Family Foundation  
Dale and Cindy Brogan  
Michael and Leslie Brown  
Georgia A. Burley  
Eddie-Lou and Lew Bush\*  
Nancy and Jack Calcott  
Mary Beth Campbell and Mark Sistek  
Barbara Jo and Richard Chernus  
Jane Christyson and Robert Mahoney  
Mary Coe  
Cohen & Company  
Rosemary Corcoran  
Corrigan Krause  
Mary Anne and Byron Crampton  
The Cyrus Eaton Foundation  
Syma Dar  
Michael DeAloia and Nora Loftus  
Joel and Bonnie Egerton  
Cindy and Tom Einhouse  
Equitable Advisors - Lakewood  
Equity Trust  
Larry and Rosemary Faulhaber  
FBC Chemical Corp.

The Foell Family  
A.J. Cianflocco and Mary Anne Garvey  
The Giant Eagle Foundation  
Goodman Real Estate Services Group, LLC.  
Chuck and Nancy Gustafson  
Karol Hoeffler  
Huntington National Bank  
Brian Murphy  
John and Mary Kay Jefferson  
Kim and Nora Katzenberger  
KeyBank Foundation  
Andrew L. Killian\*  
Saralinda Kiser  
Edward Knotek  
John Korai  
Gerrit and Peg Kuechle  
Tom and Concetta Kuluris  
Lakewood Arts Festival  
Karen Langenwalter  
Dennis Lansdowne  
Kathleen Lawther  
Sean Malloy  
Kathleen McGorray and Bob Soffer  
Medical Mutual  
Pat and Tina Miller  
The Music and Drama Club  
Dr. and Mrs. Peter Nintcheff  
Naomi Opdycke  
Anne and Jack Palomaki  
Barbara and Bob Paynter  
Jim and Barbara Pearce  
Amy and Tom Petrus  
John and Norine Prim  
Leslie Scott Dean II and Winfred Dean  
Karen Rockhold  
Richard and Mary Sanders  
Laura and David Sangree  
The Walter V & Judith L Shipley Family  
Foundation  
Donna Rae and Edward Smith  
Ann Spence  
Bill Spence  
Art and Sherri Stehlik  
Mr. and Mrs. John Steinbrunner  
Sunshine Ventures LLC  
Kenneth and Martha Taylor  
The Nest Schools  
Gina Vernaci and Bill Hilyard  
Joe and Kathy Ward  
Jonathan Ward  
Mary C. Warren  
Libby and Christopher White  
Dave Willett and Steve Meka  
Janice Young

### PRESIDENT'S CIRCLE (\$500 - \$999)

Ann and Bob Aber  
Thomas and Joann Adler Family  
Philanthropic Fund  
Anonymous  
Robert Bade and Linda Hurley  
Baldwin-Wallace University  
Bank of America Charitable Foundation  
Kathleen A. Baskoff and Steven Schwarz  
Bill and Janet Bird  
Robert and Cynthia Boas  
Sally Carr  
Colleen Clark-Sutton and Tom Sutton

CONTINUED PAGE 25

**2023  
2024  
SEASON**

**Ensemble Theatre**  
*Great Scripts. Cleveland Artists.*

SEP 8 - SEP 24

**Lungs**

by Duncan  
Macmillan



OCT 27 - NOV 12

**The Island**

by Athol Fugard, John Kani,  
& Winston Ntshona



FEB 9 - FEB 25

**Mother  
Courage  
and  
Her  
Children**

by Bertolt Brecht

Translated by Tony Kushner



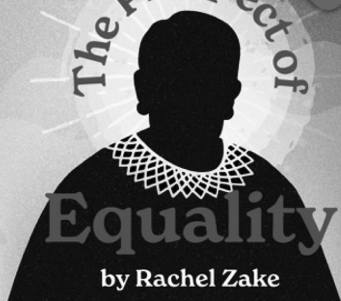
MAY 24 - JUN 9

World  
Premiere!

**The Prospect of  
Equality**

**Equality**

by Rachel Zake



**Colombi**

**NEW PLAYS  
FESTIVAL**



**In Our  
Own Words**

Our Stories, Our Voices



216-321-2930 :: [www.ensembletheatrecl.org](http://www.ensembletheatrecl.org)



Beverly Coen  
 Hal Cooper  
 Carol Crowe  
 Jeff and Lori Culliton  
 Ray and Dawn Cushing  
 Marilyn Cvetc  
 Michael and Amy Daso  
 Megan DeFranco  
 David Delgado and Linda Springer  
 Sherrie Desmond  
 Jon and Mary Fancher  
 Judy and Steve Fesko  
 Frances Floriano Goins  
 Carol Gould  
 Ed and Mary Jane Hadaway  
 Madison Development Co, LLC  
 Michael Hirsch  
 Carolyn Hufford and Thomas Yanks  
 Susan Joplin  
 James Kelly  
 Barb and Charlie Koch  
 Latham Family  
 Matt and Angela Lay  
 Lynn and Mary Lazzaro  
 Frederic Levine and Janine Martyn  
 Mike Linton  
 Tony Marini  
 Mary and Brian Marita  
 Michael and Peggi Mizen  
 Scott Montgomery  
 Rick and Jane Nash  
 Patrick and Sharon Perotti  
 Pledgeling Foundation  
 Kirsten and Thomas Reading  
 Martin Saltzman  
 Anita Scanlon  
 Mark and Nancy Seryak  
 Parvathi and Seth Shalov  
 Brian Sinchak  
 Kathleen J. St. John  
 Karin Stone  
 Allison Tanner Gill  
 Sara and Jason Verderber  
 Jane and Jim Vitou  
 Thomas Wagner and Malinda Smyth  
 Teresa Struble  
 Nelson Wagner  
 West Shore Unitarian Universalist Church  
 Robert C. and Emily C. Williams  
 Bill and Ann Zabkar  
 Genny Zarnick

**DIRECTOR'S CIRCLE**  
 (\$250 - \$499)

Gary and Susan Amendola  
 Joel and Teresa Andreani  
 Anonymous (2)  
 M. Karen Aylward  
 Dede Baker  
 Emma and Robert Barcelona  
 George and Sandra Berendt  
 Amy Holtshouse Brennan  
 Tom and Mary Brooks  
 Marianne Byrne  
 Janice and Jack Campbell  
 Richard Castele  
 Mike Chernus  
 Deborah Clare Laub

Joanne and Tim Clemens  
 Patricia Csongei  
 Jackie Discenza  
 Mary Ann and Dave Dombrowiak  
 Susan Duffy  
 Mary Eileen Fogarty  
 Ed and Lisa Gallagher  
 Eileen and John Gallagher  
 Louise B. Herrick  
 Barbara Hueter and Andrew Zajac  
 Gail Jackson  
 Carol and William Jacobs  
 Jenny Jones  
 Stephen L. Kadish Family Philanthropic Fund  
 Joe Kahn  
 Mary and Chris Kay  
 Catherine Kearney  
 Jack and Kim Kellogg  
 Brian Kennedy  
 Stanley W. Kline  
 David Kuentz  
 Betsy Lambert and Family  
 Alice Lang  
 Tim and Patti Laskey  
 Tom and Nancy Lukens  
 Marcello and Shelley Mellino  
 Marianne Monahan  
 Karen Moore  
 Howard and Jessie Patterson  
 PNC Foundation Matching Gift Program  
 Timothy and Jen Powers  
 Judy and John Pyke  
 Scott and Jill Richardson  
 Melissa Richmond and William Watterson  
 John J. Ritchey  
 Linda Rocchi  
 Eugene and Marge Ruminski  
 Keith and Donna Rush  
 Ron Rydarowicz  
 Lynda Sackett  
 Patricia Scanlon  
 Mary Lynne and David Slife  
 Arthur E. Spector  
 Timothy C. Stevens  
 Nick and Judy Stowe  
 Ms. Shawn M. Sweet  
 Susan Szanyi  
 Arthur L. Thomas  
 Karen Tolhurst  
 Kenneth S. Trump and Family  
 Greg Violand  
 Margaret Weitzel  
 Benjamin and Melanie Whiting

\*Indicates deceased

**WITH SPECIAL THANKS**

Cuyahoga County residents through  
 Cuyahoga Arts and Culture  
 Ohio Arts Council.

**HONORARY GIFTS**

Beck Center for the Arts would like to thank those who have given gifts in honor of the following individuals:

Bryan Bird  
 Eileen, Olivia and Cameron Brady  
 Rosemary Corcoran  
 Elizabeth E.  
 Cindy Einhouse  
 Cynthia and Rich Fisher  
 Bill Gorton  
 Ann Klonowski  
 Jack Lazzaro  
 Ingrid Matera  
 Anne McEvoy  
 Kathleen McGorray  
 Iris November  
 Michael J. O'Brien  
 Douglas N. Puskas  
 Tom and Helen Rathburn  
 John Reynolds  
 Ally Rovito  
 Lynda Sackett  
 Tom Wagner  
 Jason Weiner  
 The Whiteaire Family  
 Megan Winters  
 Amy Wooley

**MEMORIAL GIFTS**

Beck Center for the Arts would like to thank those who have given gifts in memory of the following individuals:

Rita A. Barniak  
 Emily Baskoff  
 Ruth Bertrand  
 Walter Campbell  
 Walt Campbell, Mary Campbell Nir, &  
 Margaret Campbell  
 Michael Carozzoni  
 Carol Culp  
 Leah R. Dedrick  
 Edward Dragony  
 Rosemarie Feighan DeJohn  
 Judy A. Fox  
 Pam Gallagher  
 Fran and Evelyn Girardi  
 William J. Harper  
 Barbara Hunter  
 Kevin Kelly  
 Andrew Killian  
 Bruce W. Lang  
 Janet Lasley  
 Lee Mackey  
 Nancy McIvor  
 Jack Delano Neal, PHD  
 Barbara Nussbaum King  
 Dr. Raymond Votyпка  
 Donald and Patricia Santa-Emma  
 Nancy A. Score  
 Barbara Swearingen  
 Betty Weiss

# NEW WESTLAKE CLEANERS

LAUNDRY SERVICES  
DRY CLEANERS

17794 DETROIT AVE  
LAKEWOOD, OH 44107  
(216) 228-3939



Join Beck Center for the Arts in expressing our heartfelt gratitude to our wonderful neighbor, New Westlake Dry Cleaners, for their dedication to keeping our costumes looking fresh and vibrant!

Pay them a visit today and experience the magic of New Westlake Dry Cleaners for yourself!



New Westlake Cleaners



Beck Center For the Arts

## EXPLORE BECK CENTER FOR THE ARTS' EXCLUSIVE COSTUME RENTALS!

Looking for the perfect costume? Look no further! Beck Center for the Arts offers a wide range of costume rental options to meet your every need. Whether you're seeking a unique ensemble or have a special vision in mind, we've got you covered.

Our inventory of costume rental pieces is constantly expanding, ensuring you'll find the perfect attire for any occasion. But that's not all! We're also thrilled to take custom orders, helping you bring your dream costume to life.

Don't miss out on the chance to step into a world of creativity and style!

Contact our wardrobe manager, Betty Pitcher, today at (330) 329-3505 or via email at [bpitcher@beckcenter.org](mailto:bpitcher@beckcenter.org) for more information and to secure your ideal costume.



PHOTO: STEVE WAGNER

ELF COSTUMES AVAILABLE AT BECK CENTER



**BETTY'S COSTUME  
CREATIONS & RENTALS**  
Direct: 330.329.3505  
[bpitcher@beckcenter.org](mailto:bpitcher@beckcenter.org)

Customer Service: 216.521.2540

**HELEN BROWN SOCIETY**

All of us here at Beck Center for the Arts would like to thank those who let us know they have included Beck Center in their will or estate plans. Members of the Helen Brown Society are recognized in our playbills, invited to select events and performances, and ensures future generations will have dynamic arts education and performance in our community.

For more information regarding the Helen Brown Society or planned giving, please contact Kristen Levy, Director of Development, at [klevy@beckcenter.org](mailto:klevy@beckcenter.org).

- Rachel Abernethy
- Anonymous (3)
- Kenneth C. Beck Estate
- Ruth B. Bertrand\*
- Estate of Nicholas C. Brodella
- The Helen E. Brown Trust
- Jean Bulicek Estate
- Milan G. Busta\*
- Nancy and Jack Calcott
- Mary Beth Campbell and Mark Sistek
- Rosemary Corcoran
- Helen T. Corns\*
- Cotabish Charitable Remainder Trust
- Mary Anne and Byron Crampton
- The William R. Daniels Memorial Fund
- Norma M. Dolezal
- Estate of Janet L. Dreyer
- Mr. Howard Egert, Esq.\*
- Cindy and Tom Einhouse
- David Greenspan and Mary Kim Elkins
- Estate of Juanita V. English
- Jon and Mary Fancher
- Dianna and Michael Foley
- Virginia Q. Foley\*
- Joan Alice Ford
- Estate of Lorna Hart
- Mr. and Mrs. James P. Hendy
- Doug Hoffman and Ron Stach
- The Pauline Hudson Estate
- Yoshiko Ikuta\*
- Nozomi Ikuta
- The Virginia Jones Fund
- Andrew L. Killian\*
- R. Robert Koch Trust
- Vilma L. Kohn
- Pauline Kurtz
- The Vida C. Logan Fund
- Kathleen McGorray and Bob Soffer
- John and Mary McGowan
- Lisa Mackey McLean and David McLean
- Maurice J. Mitchell
- Dave and Traci Nolan
- Estate of Donald A. Nykanen
- Lee and Maria Parks
- William and Patricia Reichard
- Karen Rockhold
- Ethel Scheingold Estate
- William and Susan Schmitt
- Vivian H. Schulze Trust
- Nancy Score\*
- J.R. Shaw and Dek Ingraham

- Sandra Sauder
- Thomas and Melissa Stickney
- Gery and Cheryl Smith
- Vince Smith
- Estate of Mary Ruth Steele
- Estate of Jeannette E. Stewart
- Max W. Thomas
- Hugh Thurnauer Trust
- Family of Hugh Thurnauer
- Ellen Todia and David Matthiesen
- Thomas Wagner and Malinda Smyth
- Joe and Kathy Ward
- Mary C. Warren
- Sally and Jim Weakley
- Margaret Weitzel
- Estate of Thomas Williams

**CREATING OUR FUTURE CAMPAIGN DONOR LIST**

We gratefully acknowledge the support of the following individuals, corporations, foundations, government grants, and organizations that have contributed \$1,000 or more to Creating Our Future: The Campaign for Beck Center. For more information on naming opportunities and touring our renovations, please contact Kristen Levy, Director of Development, at [klevy@beckcenter.org](mailto:klevy@beckcenter.org).

We are excited to have completed the third and final phase of renovations, which includes the addition of new restrooms, dedicated classroom space for theater education, an ADA-accessible entrance, and a new marquee for the Senney Theater. Thanks to the following supporters, we have renovated over 55% of the Beck Center campus (35,000 sq ft) to bring the standards of our facilities up to those of our programming. As of January 24, 2024

**\$1,000,000+**  
Joyce and Wally Senney

**\$500,000 - \$999,999**  
Chann Fowler-Spellman and Ed Spellman  
State of Ohio Capital Appropriation

**\$100,000 - \$499,999**  
The Callahan Foundation  
Fidelity Charitable Gift Fund  
The Char and Chuck Fowler Family Foundation  
Kathy and Ken Haber  
Bonnie J. Hagerman  
Doug Hoffman and Ron Stach  
Bill and Joyce Litzler  
William Minnich  
Oatey Foundation  
John A. Reynolds  
Sandra Sauder  
William and Susan Schmitt  
The Kelvin and Eleanor Smith Foundation  
Ellen Todia and David Matthiesen  
WWMR Foundation

**\$50,000 - \$99,999**  
Dale and Cindy Brogan  
The George W. Codrington Charitable Foundation  
Doug and Karen\* Cooper  
David Deming  
Dorn Family Foundation  
Mary and Tom Holland  
Michael and Carol O'Brien  
Lee and Maria Parks  
Pam and Tom Smith  
Michael and Wendy Summers  
Women's Board of Beck Center

**\$25,000 - \$49,999**  
Anonymous  
Carol Barnak  
Joel and Bonnie Egertson  
Charlotte and Charles Fowler  
Richard and Judy\* Fox  
Thomas and Mary Ellen Fraser  
The William O and Gertrude Lewis Frohring Foundation  
The Giant Eagle Foundation  
Charles and Marie Grossman  
Terry and Dona Jones  
Gerrit and Peg Kuechle  
Kulas Foundation  
City of Lakewood  
Dennis and Kim Lansdowne  
Merrill Lynch & Co. Foundation, Inc.  
John P. Murphy Foundation  
Deborah L. Neale  
The Nord Family Foundation  
Tim Penton and Jay Gardner  
Brad and Margaret Richmond  
Lynda Sackett and Bill Knoble\*  
Kevin Sauder  
The Kent H. Smith Charitable Trust  
Donald\* and Karen Strang  
Margaret G. Weitzel

**\$10,000 - \$24,999**  
Rachel Abernethy  
Anonymous (2)  
Barber & Hoffman, Inc.  
Bialosky & Partners Architects  
Curt Brosky and Betty Tereck  
Commercial Interior Resources, Inc.  
Elaine and David\* Cook  
Mary Anne and Byron Crampton  
Dependable Painting Company  
Eaton Charitable Fund  
Cindy and Tom Einhouse  
David Greenspan and Mary Kim Elkins  
Cindy and Tim Friedmann  
Bill Garrison and Mary Jo Mlaker  
Charles and Nancy Gustafson  
The Hershey Foundation  
Elda C. Krach  
Nancy C. Krueger  
Rotary Club of Lakewood-Rocky River  
Sean Malloy  
Mickey and Larry Mencin  
In Memory of Barbara Nussbaum King  
Pat and Jim Oliver

# RUST BELT RIDERS



## Food Scrap Composting

Get your first month free on a new drop-off membership  
with discount code 'BECK12'.

[www.rustbeltriders.com](http://www.rustbeltriders.com) (216) 800-4651 Ext 2



### **EXCITING NEWS: 90 YEARS OF BECK CENTER FOR THE ARTS BOOK BY LUCINDA EINHOUSE, PRESIDENT & CEO, NOW AVAILABLE!**

Discover the first-ever history book on Beck Center for the Arts! Celebrating nearly 90 years of legacy, this captivating paperback by Lucinda Einhouse, President & CEO, is a must-have. Get yours exclusively on Amazon.com for \$29.95. With 196 colorful pages, delve into the journey from "The Guild of the Masques" to the thriving institution today. Featuring vibrant production shots and fascinating stories, all profits support Beck Center's endowment. Don't miss out on this collector's item!



AVAILABLE ON  
AMAZON.COM



Anne and Jack Palomaki  
 Anthony and Mary Rego  
 Laura and David Sangree  
 Schwab Charitable Fund  
 Carolyn P. Seelbach\*  
 Karen Skunta & Company  
 Gina Vernaci and Bill Hilyard  
 Thomas Wagner and Malinda Smyth  
 Mary C. Warren  
 Laird and Jennifer Wynn

**\$5,000 - \$9,999**  
 American Endowment Foundation  
 Anonymus  
 Mark and Cynthia Bacon  
 Ruth B. Bertrand\*  
 The Bonne Bell Family Foundation  
 Michael R. and Leslie Brown  
 Monica Brown  
 Georgia A. Burley  
 Nancy and Jack Calcott  
 Dance Alliance of Beck Center  
 Syma Dar  
 Michael and Amy Daso  
 The Dominion Energy Charitable Foundation  
 Edward Dragony  
 David and Virginia Estrop  
 Larry and Rosemary Faulhaber  
 Pam Gallagher\*  
 Dorothy Ginley-Bahm  
 Kim and Nora Katzenberger  
 Andrew L. Killian\*  
 John and Judy Kropf  
 Lakewood-Rocky River Sunrise Rotary Club  
 William LaPlace  
 Carol Latham  
 Terrence and Karen McHugh  
 Ryan and Alysia McKean  
 Nancy and John McMillan  
 Patricia and George Miller  
 Nordson Corporation Foundation  
 Deborah and John O'Neill  
 Monica and Keith Owen  
 Barbara and Bob Paynter  
 Jeff and Nora Poore  
 Donna Rae and Edward Smith  
 Art and Sherri Stehlik  
 Theater Alliance of Beck Center  
 Richard and Gail Tanner  
 Landon and Corey Tracey  
 Turner Construction Company  
 Philip Wenk

**\$1,000 - \$4,999**  
 Dena and Daniel Adler  
 Adobe Systems Incorporated  
 Joel and Teresa Andreani  
 Anonymous (2)  
 Brenda and George Anthony  
 State Senator Nickie Antonio and  
 Jean Kosmac  
 Sam and Chrysa Babic  
 Tom and Jenni Baker  
 Kathleen A. Baskoff and Steven Schwarz  
 Kathryn Berkshire  
 David and Elizabeth Breudigam  
 Robert and Mary Calsin  
 Patrick Carroll and Diana D'Alessandro  
 Lynda Carter  
 Charities Aid Foundation of America  
 Colleen Clark-Sutton and Tom Sutton  
 Community West Foundation  
 Hal and Connie\* Cooper  
 Rosemary and Richard\* Corcoran  
 Tim and Tracy Coughlin  
 Joanna and Marc D'Agostino  
 Matthew and Kathleen Daugherty  
 Mary Beth and Jeff DeClerck  
 David Delgado and Linda Springer  
 Tom and Tricia Dent  
 Sherrie Desmond  
 Gregory Good and Adrienne Embery-Good  
 Equitable Advisors - Lakewood  
 Victor and Janet Erml  
 Jon and Mary Fancher  
 Jenny and Ralph Febbo  
 FGI Foundation  
 Jim and Mary Gagen  
 Ed and Lisa Gallagher  
 Henry Hilow and Judy Ghazoul Hilow  
 Joe and Peggy Gibbons  
 Kathy Goepfert  
 Frances Floriano Goins  
 William Gorton and Susie Blackburn  
 George Graham and Michael Fleenor  
 Michelle Hillstrom  
 Barbara Hueter and Andrew Zajac  
 Hyland Software, Inc.  
 Impel Creative, Inc.  
 John and Mary Kay Jefferson  
 Emily Jett and Mark Getsay  
 Robert and Betty Karras  
 Mary and Chris Kay  
 KeyBank Foundation  
 Cathy and Peter\* Kuhn  
 Richard and Laura Little

Richard and Shirley Lutts  
 Tony Marini  
 Mary and Brian Marita  
 Kelly and Jeremy Martin  
 Cindy and Jake Marx  
 Amy and Ian Maurer  
 Freida McGee and Michael Wochna  
 Kathleen McGorray and Bob Soffer  
 Dave and Val Mechenbier  
 Marcello and Shelley Mellino  
 Carol and Dale Miller  
 Colin and Sarah Moeller  
 Barbara Morrison  
 Lauren Mueller  
 Dr. and Mrs. Peter Nintcheff  
 Dave and Traci Nolan  
 John O'Brien  
 Naomi Opdycke  
 Jim and Barbara Pearce  
 PNC Foundation Matching Gift Program  
 Donna and George Puskas  
 Tom and Helen Rathburn  
 Carol and Bob Richardson  
 John J. Ritchey  
 Jeffrey and Susan Ritter  
 Karen Rockhold  
 Brian Sapola and Jessica Lovich-Sapola  
 Sharon and Steve Schuldt  
 The Herb Score Family  
 Mark and Nancy Seryak  
 Sherwin-Williams Company  
 Brian Sinchak and Lakewood Catholic  
 Academy  
 Victoria and Daniel Smigelski  
 Jan Soeder\*  
 Stephanie Spahr  
 Bill Spence  
 Ann Spence  
 The Staub Family  
 Mr. and Mrs. John Steinbrunner  
 Thomas and Melissa Stickney  
 Bob Taylor and Jeff Herrmann  
 Arthur L. Thomas  
 Terry and Candace Vincent  
 Kathy and Gregg Wasilko  
 Karen and Jeffrey Weber  
 Dick West  
 Judith and Walter Wright  
 Karen Youngstrom

\*Indicates deceased

Beck Center's Dance Program is supported by the Lynda Sackett Endowment for Dance Education and the James Kurtz Memorial Endowment Fund.	Beck Center's Youth Theater program is supported by The Mary Ward Scholarship Fund.	The Community West Foundation is a proud supporter of Creative Arts Therapies at Beck Center for the Arts.
--	---	--

DOBAMA THEATRE

**“WIG: SNATCHED,  
WAIST: SNATCHED,  
LIFE: SNATCHED.”**



# AT THE WAKE OF A DEAD DRAG QUEEN

JANUARY 26—  
FEBRUARY 18, 2023

WRITTEN BY:  
Terry Guest

DIRECTED BY:  
Preston Crowder

[DOBAMA.ORG](http://DOBAMA.ORG)

WITH GENEROUS SUPPORT FROM

THE GEORGE GUND  
FOUNDATION

DANIEL MALTZ

PAUL M. ANGELL  
FAMILY FOUNDATION

AGNES  
STUDIO

CLEVELAND  
FOUNDATION

Ohio Arts  
COUNCIL

CLEVELAND  
arts & culture  
FOUNDATION

SHUBERT  
FOUNDATION

# Take Command of Team Performance

Dale Carnegie is proud to partner with the Beck Center for the Performing Arts to help them build their team.

Can we help you build your team?



Offering professional development in communication, sales, customer service, and leadership.

---

[neohio.dalecarnegie.com](https://neohio.dalecarnegie.com)

---

Marilee MacAskill  
216-223-7733  
[Marilee.MacAskill@dalecarnegie.com](mailto:Marilee.MacAskill@dalecarnegie.com)



## *Expert Care for Your Voice*

**Find your voice and perform your best with the Cleveland Clinic Voice Center.**

If your voice is vital to your profession, even a minor problem can have a major effect on your career. That's why the Cleveland Clinic Voice Center is here to help. We specialize in helping vocal professionals from around the world perform better, prolong their careers and preserve the health of their voice.

**Whether you're local, just passing through or located out of town, we have the care to fit all voice needs:**

- Comprehensive evaluations and personal consultations
- Treatment for major problems and minor disorders
- Voice well-check exams
- Routine appointments
- Long-distance consultations
- On-site evaluations and treatment
- Vocal rehabilitation studio

Our state-of-the-art facilities and experienced team of physicians and speech-language pathologists are committed to providing you with the best possible care. We use the most up-to-date technology, including videostroboscopy, voice functional analyses and high-definition imaging to diagnose and treat your vocal problems.

**Our expert laryngologists and speech-language pathologists see patients at several Northeast Ohio locations:**

- Cleveland Clinic main campus
- Hillcrest Hospital
- Twinsburg Family Health and Surgery Center
- Westlake Medical Campus – Building A

Contact the **Cleveland Clinic Voice Center** today at **216.444.8500** to schedule a voice consultation. To learn more, visit **[ClevelandClinic.org/Voice](http://ClevelandClinic.org/Voice)**.

